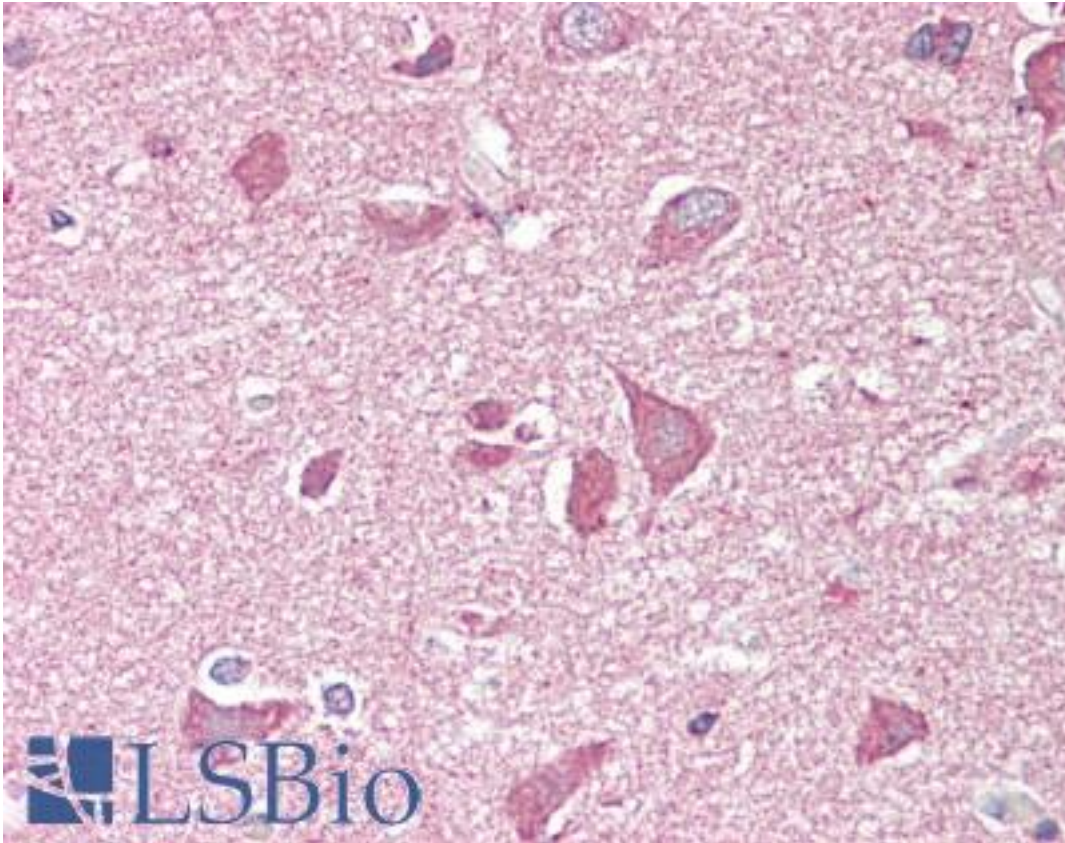


NCAM2 Goat anti-Human Polyclonal (C-Terminus) Antibody - LS-B7344 - LSBio	
CatalogID:	LS-B7344
Validation:	This antibody replaces catalog number LS-C55149. It has been validated for use in the following assays: IHC-P.
Target:	neural cell adhesion molecule 2 (NCAM2)
Synonyms:	NCAM2 Antibody, N-CAM-2 Antibody, NCAM-2 Antibody, NCAM21 Antibody
Family / Subfamily:	Immunoglobulin / not assigned-Immunoglobulin
Host	NCAM2 antibody was produced in Goat
Clonality:	Polyclonal
Immunogen Species:	NCAM2 antibody was raised against Human
Antigen Type:	Synthetic peptide
Immunogen:	NCAM2 antibody was raised against synthetic peptide C-KVSNDIQSKEDDSK from the C-terminus of human NCAM2 (NP_004531.2). Percent identity by BLAST analysis: Human, Gibbon, Monkey, Marmoset, Hamster, Panda, Bovine, Dog, Horse, Rabbit (100%); Bat, Platypus (93%); Mouse, Rat, Elephant, Chicken (87%).
Specificity:	Human NCAM2.
Epitope:	C-Terminus
Reactivity:	Human, Gibbon, Monkey, Bovine, Dog, Hamster, Horse, Rabbit
Predicted Reactivity:	Bat
Purification:	Immunoaffinity purified
Presentation:	Tris-buffered saline, pH 7.3, 0.5% BSA, 0.02% sodium azide
Recommended Storage:	Store at -20°C. Minimize freezing and thawing.
Uses:	IHC - Paraffin (3.75 µg/ml), ELISA (1:4000) (Optimal dilution to be determined by the researcher)
Size:	50 µg
Concentration:	0.5 mg/ml

Immunohistochemistry Image:



Anti-NCAM2 antibody IHC of human brain, cortex. Immunohistochemistry of formalin-fixed, paraffin-embedded tissue after heat-induced antigen retrieval. Antibody LS-B7344 concentration 3.75 ug/ml.

Requested From:

Japan

Laboratory Reagent For In Vitro Research Use Only

Not for resale without prior written consent from LifeSpan BioSciences, Inc.

Created on 9/24/2014

© 2014 LifeSpan BioSciences