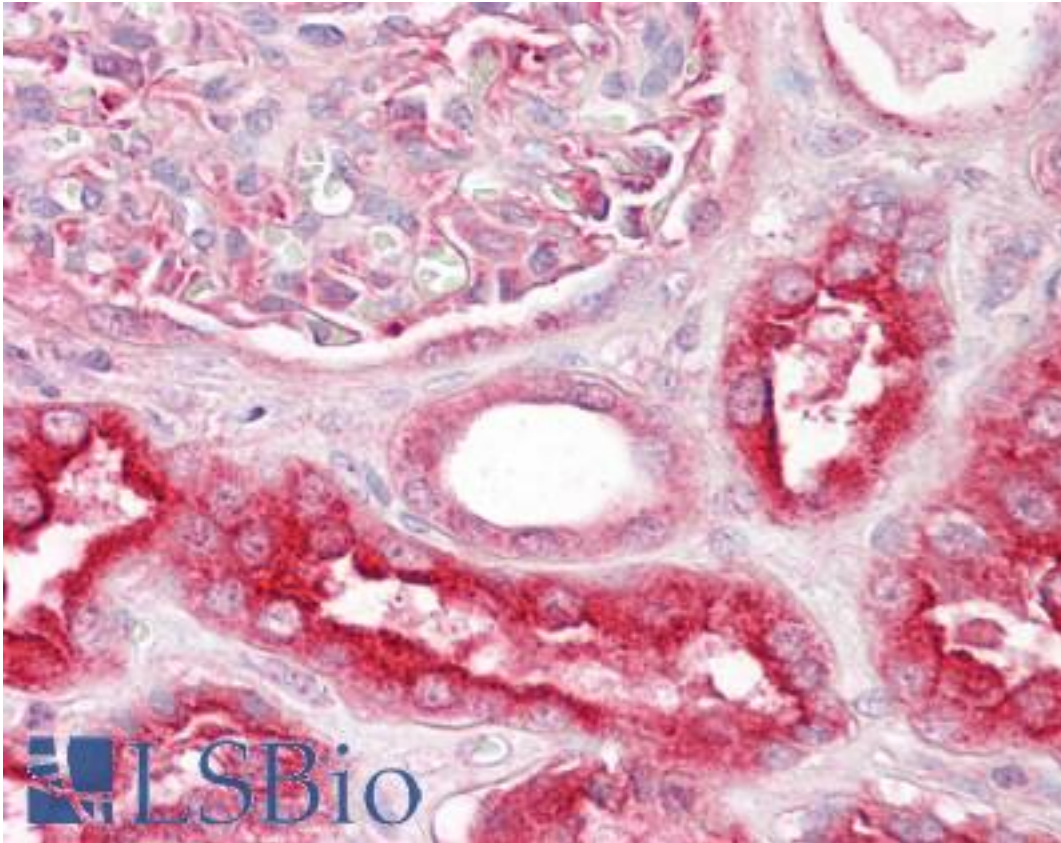


**VPS11 Goat anti-Human Polyclonal (Internal) Antibody - LS-B7341 - LSBio**

<b>CatalogID:</b>	LS-B7341
<b>Validation:</b>	This antibody replaces catalog number LS-C55668. It has been validated for use in the following assays: IHC-P.
<b>Target:</b>	vacuolar protein sorting 11 homolog ( <i>S. cerevisiae</i> ) (VPS11)
<b>Synonyms:</b>	VPS11 Antibody, END1 Antibody, HVPS11 Antibody, PEP5 Antibody, RING finger protein 108 Antibody, RNF108 Antibody
<b>Host</b>	VPS11 antibody was produced in Goat
<b>Clonality:</b>	Polyclonal
<b>Immunogen Species:</b>	VPS11 antibody was raised against Human
<b>Antigen Type:</b>	Synthetic peptide
<b>Immunogen:</b>	VPS11 antibody was raised against synthetic peptide C-HALQEKDTQTKLE from an internal region of human VPS11 (NP_068375.3). Percent identity by BLAST analysis: Human, Gorilla, Marmoset, Mouse, Rat, Hamster, Dog, Bovine, Horse, Pig (100%); Opossum, Xenopus (92%); Chicken, Medaka, Zebrafish (85%).
<b>Specificity:</b>	Human VPS11.
<b>Epitope:</b>	Internal
<b>Reactivity:</b>	Human, Gorilla, Monkey, Mouse, Rat, Bovine, Dog, Hamster, Horse, Pig
<b>Predicted Reactivity:</b>	Xenopus
<b>Purification:</b>	Immunoaffinity purified
<b>Presentation:</b>	Tris-buffered saline, pH 7.3, 0.5% BSA, 0.02% sodium azide
<b>Recommended Storage:</b>	Store at -20°C. Minimize freezing and thawing.
<b>Uses:</b>	IHC - Paraffin (3.75 µg/ml), ELISA (1:32000) (Optimal dilution to be determined by the researcher)
<b>Size:</b>	50 µg
<b>Concentration:</b>	0.5 mg/ml

**Immunohistochemistry Image:**



Anti-VPS11 antibody IHC of human kidney. Immunohistochemistry of formalin-fixed, paraffin-embedded tissue after heat-induced antigen retrieval. Antibody LS-B7341 concentration 3.75 ug/ml.

**Requested From:**

Japan

Laboratory Reagent For In Vitro Research Use Only

Not for resale without prior written consent from LifeSpan BioSciences, Inc.

Created on 9/24/2014

© 2014 LifeSpan BioSciences