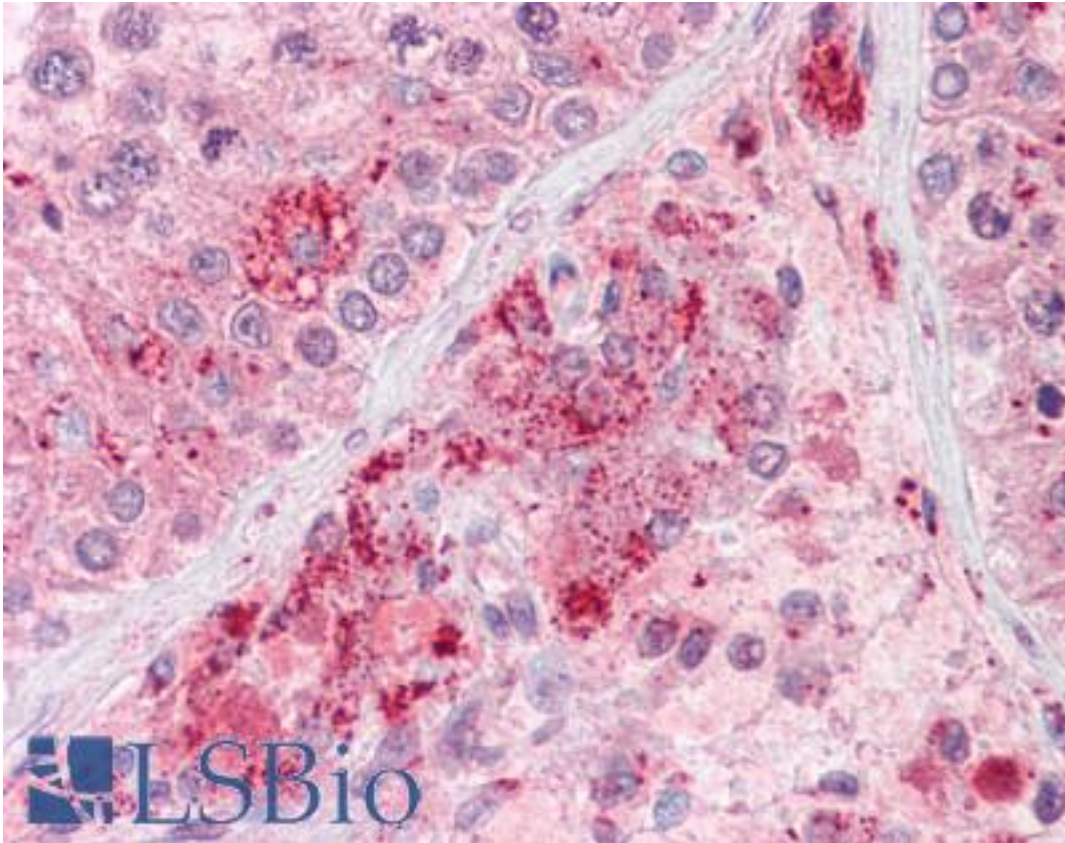


RIF1 Goat anti-Human Polyclonal (aa2076-2089) Antibody - LS-B7340 - LSBio

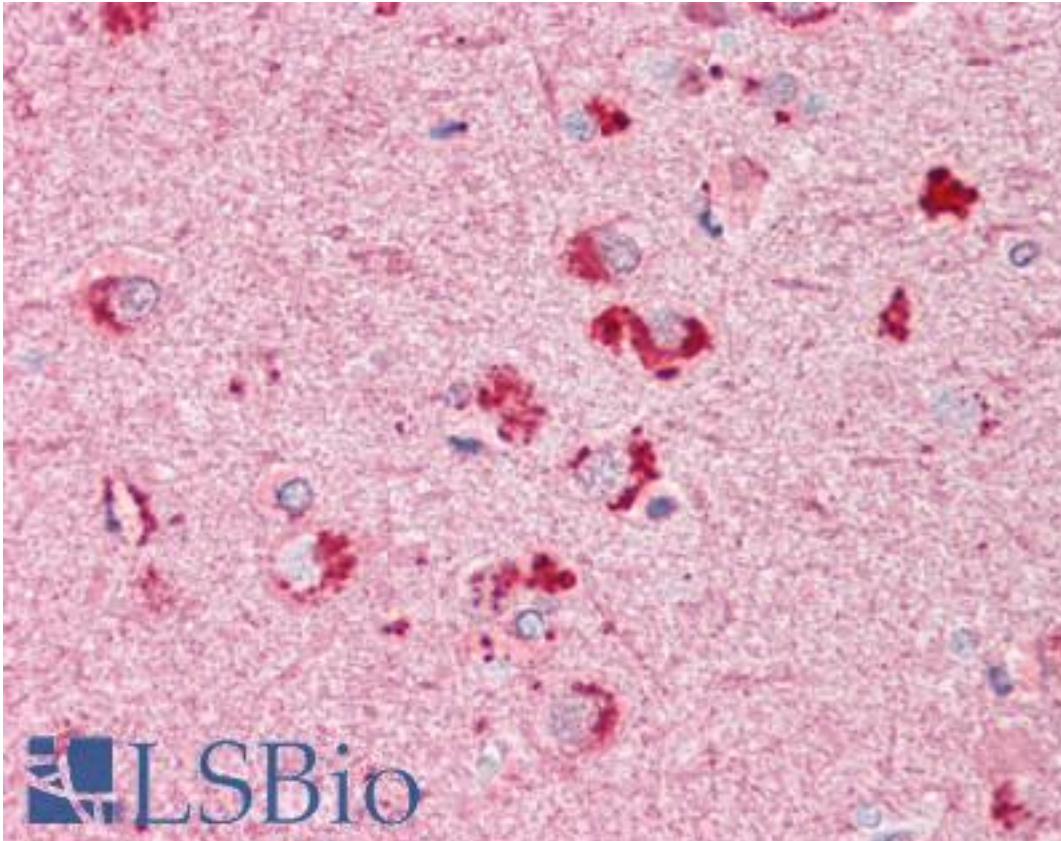
| | |
|-----------------------------|--|
| CatalogID: | LS-B7340 |
| Validation: | This antibody replaces catalog number LS-C55396. It has been validated for use in the following assays: IHC-P. |
| Target: | RAP1 interacting factor homolog (yeast) (RIF1) |
| Synonyms: | RIF1 Antibody |
| Host | RIF1 antibody was produced in Goat |
| Clonality: | Polyclonal |
| Immunogen Species: | RIF1 antibody was raised against Human |
| Antigen Type: | Synthetic peptide |
| Immunogen: | RIF1 antibody was raised against synthetic peptide C-EEGIIDANKTETNT from an internal region of human RIF1 (NP_060621.3). Percent identity by BLAST analysis: Human, Gibbon (100%); Monkey (86%). |
| Specificity: | Human RIF1. This antibody is expected to recognise an epitope corresponding to aa 2076-2089 of human RIF1 protein. |
| Epitope: | aa2076-2089 |
| Reactivity: | Human, Gibbon |
| Purification: | Immunoaffinity purified |
| Presentation: | Tris-buffered saline, pH 7.3, 0.5% BSA, 0.02% sodium azide |
| Recommended Storage: | Store at -20°C. Minimize freezing and thawing. |
| Uses: | IHC - Paraffin (3.75 µg/ml), ELISA (1:16000) (Optimal dilution to be determined by the researcher) |
| Size: | 50 µg |
| Concentration: | 0.5 mg/ml |

Immunohistochemistry Image:



Anti-RIF1 antibody IHC of human testis. Immunohistochemistry of formalin-fixed, paraffin-embedded tissue after heat-induced antigen retrieval. Antibody LS-B7340 concentration 3.75 ug/ml.

Immunohistochemistry Image:



Anti-RIF1 antibody IHC of human brain, cortex. Immunohistochemistry of formalin-fixed, paraffin-embedded tissue after heat-induced antigen retrieval. Antibody LS-B7340 concentration 3.75 ug/ml.

Requested From:

Japan

Laboratory Reagent For In Vitro Research Use Only

Not for resale without prior written consent from LifeSpan BioSciences, Inc.

Created on 9/24/2014

© 2014 LifeSpan BioSciences