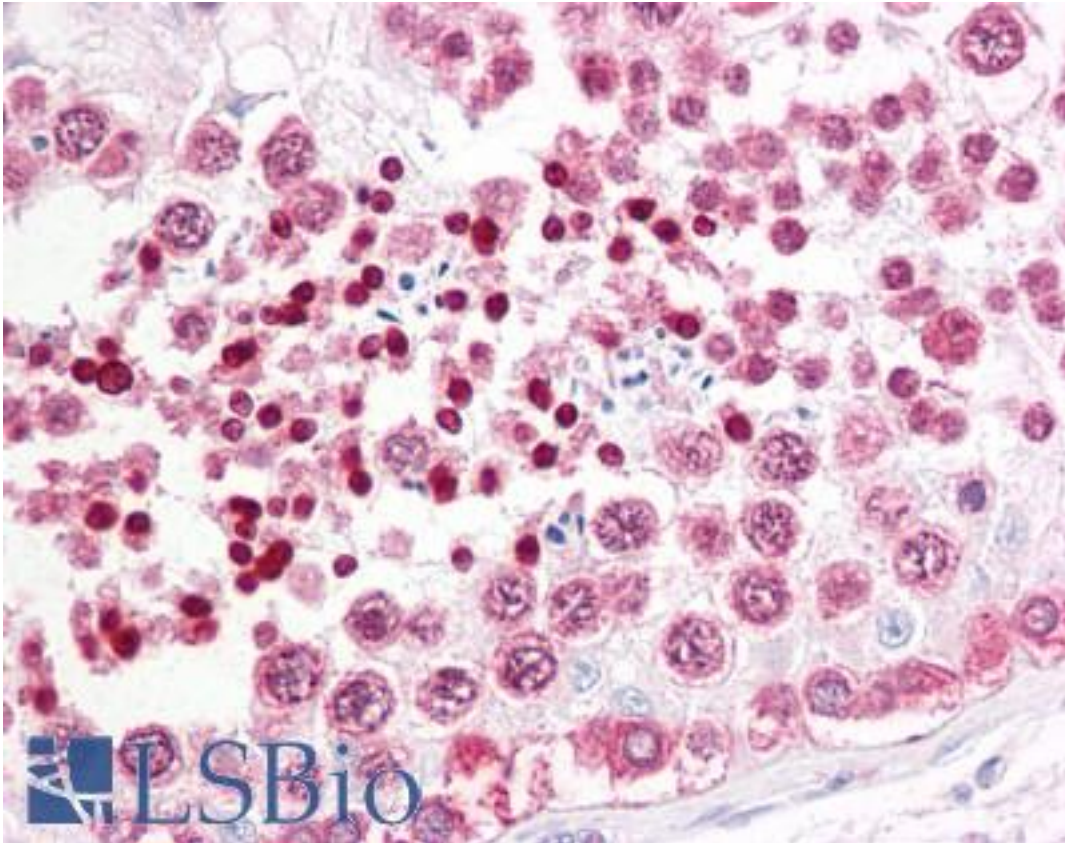


INADL / PATJ Goat anti-Human Polyclonal (N-Terminus) Antibody - LS-B7336 - LSBio	
<b>CatalogID:</b>	LS-B7336
<b>Validation:</b>	This antibody replaces catalog number LS-C55005. It has been validated for use in the following assays: IHC-P.
<b>Target:</b>	InaD-like (Drosophila) (INADL)
<b>Synonyms:</b>	INADL Antibody, Cipp Antibody, HINADL Antibody, InaD-like (Drosophila) Antibody, InaD-like protein Antibody, InaD-like Antibody, Inadl protein Antibody, PATJ Antibody, Inadl, c-term variant3 Antibody, PDZ domain protein Antibody
<b>Host</b>	INADL antibody was produced in Goat
<b>Clonality:</b>	Polyclonal
<b>Immunogen Species:</b>	INADL / PATJ antibody was raised against Human
<b>Antigen Type:</b>	Synthetic peptide
<b>Immunogen:</b>	INADL / PATJ antibody was raised against synthetic peptide PENPATDKLQVLQ-C from the N-terminus of human INADL (NP_795352.2). Percent identity by BLAST analysis: Human, Gibbon, Marmoset, Bovine, Rabbit (100%); Panda, Dog, Bat, Horse (92%); Elephant, Turkey, Chicken (85%).
<b>Specificity:</b>	Human INADL.
<b>Epitope:</b>	N-Terminus
<b>Reactivity:</b>	Human, Gibbon, Monkey, Bovine, Rabbit
<b>Predicted Reactivity:</b>	Bat, Dog, Horse
<b>Purification:</b>	Immunoaffinity purified
<b>Presentation:</b>	Tris-buffered saline, pH 7.3, 0.5% BSA, 0.02% sodium azide
<b>Recommended Storage:</b>	Store at -20°C. Minimize freezing and thawing.
<b>Uses:</b>	IHC - Paraffin (3.75 µg/ml), ELISA (1:32000) (Optimal dilution to be determined by the researcher)
<b>Size:</b>	50 µg
<b>Concentration:</b>	0.5 mg/ml

**Immunohistochemistry Image:**



Anti-INADL antibody IHC of human testis. Immunohistochemistry of formalin-fixed, paraffin-embedded tissue after heat-induced antigen retrieval. Antibody LS-B7336 concentration 3.75 ug/ml.

**Requested From:**

Japan

Laboratory Reagent For In Vitro Research Use Only

Not for resale without prior written consent from LifeSpan BioSciences, Inc.

Created on 9/24/2014

© 2014 LifeSpan BioSciences