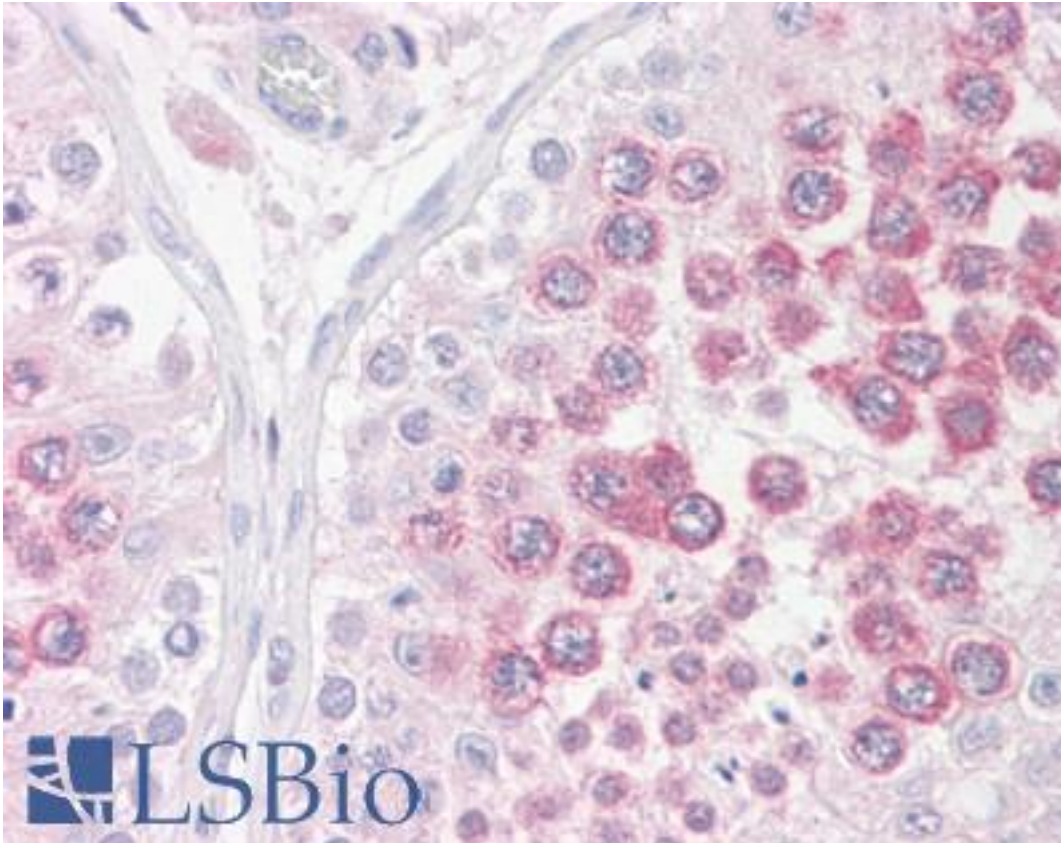


BOULE / BOLL Goat anti-Human Polyclonal (C-Terminus) Antibody - LS-B7334 - LSBio

CatalogID:	LS-B7334
Validation:	This antibody replaces catalog number LS-C54588. It has been validated for use in the following assays: IHC-P.
Target:	boule-like RNA-binding protein (BOLL)
Synonyms:	BOLL Antibody, Bol, boule-like (Drosophila) Antibody, Protein boule-like Antibody, BOULE Antibody
Host	BOLL antibody was produced in Goat
Clonality:	Polyclonal
Immunogen Species:	BOULE / BOLL antibody was raised against Human
Antigen Type:	Synthetic peptide
Immunogen:	BOULE / BOLL antibody was raised against synthetic peptide C-QPEPIKTVWSIHY from the C-terminus of human BOLL / BOULE (NP_932074.1; NP_149019.1). Percent identity by BLAST analysis: Human, Chimpanzee, Gibbon, Monkey, Tamarin, Mouse, Dog, Bovine, Opossum (100%); Marmoset (92%).
Specificity:	Human BOLL / BOULE. This antibody is expected to recognize both reported isoforms (NP_932074.1; NP_149019.1).
Epitope:	C-Terminus
Reactivity:	Human, Chimpanzee, Gibbon, Mouse, Bovine, Dog
Predicted Reactivity:	Monkey
Purification:	Immunoaffinity purified
Presentation:	Tris-buffered saline, pH 7.3, 0.5% BSA, 0.02% sodium azide
Recommended Storage:	Store at -20°C. Minimize freezing and thawing.
Uses:	IHC - Paraffin (3.75 µg/ml), ELISA (1:32000) (Optimal dilution to be determined by the researcher)
Size:	50 µg
Concentration:	0.5 mg/ml

Immunohistochemistry Image:



Anti-BOLL / BOULE antibody IHC of human testis. Immunohistochemistry of formalin-fixed, paraffin-embedded tissue after heat-induced antigen retrieval. Antibody LS-B7334 concentration 3.75 ug/ml.

Requested From:

Japan

Laboratory Reagent For In Vitro Research Use Only

Not for resale without prior written consent from LifeSpan BioSciences, Inc.

Created on 9/24/2014

© 2014 LifeSpan BioSciences