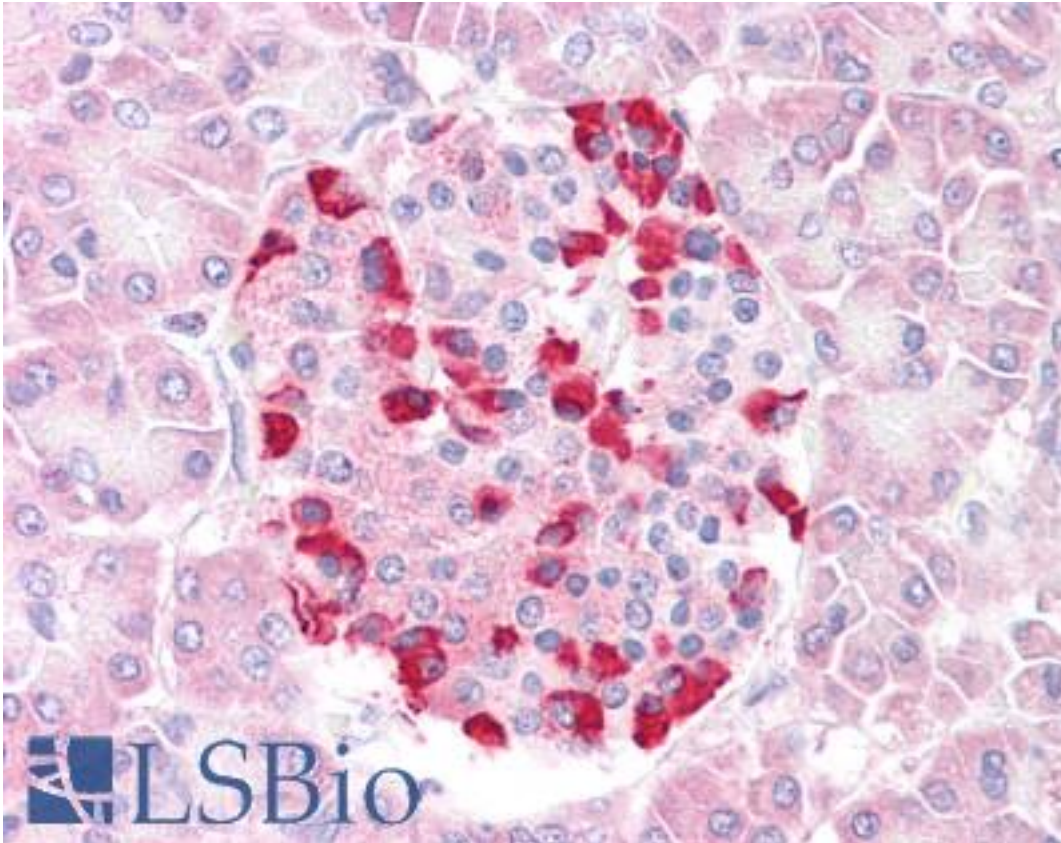


SOCS4 Goat anti-Human Polyclonal Antibody - LS-B7332 - LSBio

CatalogID:	LS-B7332
Validation:	This antibody replaces catalog number LS-C34637. It has been validated for use in the following assays: IHC-P.
Target:	suppressor of cytokine signaling 4 (SOCS4)
Synonyms:	SOCS4 Antibody, CIS4 Antibody, SOCS-4 Antibody, SSI4 Antibody, SOCS-7 Antibody
Host	SOCS4 antibody was produced in Goat
Clonality:	Polyclonal
Immunogen Species:	SOCS4 antibody was raised against Human
Antigen Type:	Synthetic peptide
Immunogen:	SOCS4 antibody was raised against synthetic peptide C-SKVRVLRIDAPEQQ from the C-terminus of human SOCS4 (NP_543143.1; NP_955453.1). Percent identity by BLAST analysis: Human, Gorilla, Orangutan, Gibbon, Monkey, Marmoset, Elephant, Dog, Bovine, Horse, Rabbit, Pig (100%); Panda, Bat, Chicken (93%); Mouse, Hamster (86%).
Specificity:	Human SOCS4. Both variants represent identical protein (NP_543143.1 and NP_955453.1).
Reactivity:	Human, Gorilla, Orangutan, Gibbon, Monkey, Bovine, Dog, Horse, Pig, Rabbit
Predicted Reactivity:	Bat, Chicken
Purification:	Immunoaffinity purified
Presentation:	Tris-buffered saline, pH 7.3, 0.5% BSA, 0.02% sodium azide
Recommended Storage:	Store at -20°C. Minimize freezing and thawing.
Uses:	IHC - Paraffin (3.75 µg/ml), ELISA (1:32000) (Optimal dilution to be determined by the researcher)
Size:	50 µg
Concentration:	0.5 mg/ml

Immunohistochemistry Image:



Anti-SOCS4 antibody IHC of human pancreas. Immunohistochemistry of formalin-fixed, paraffin-embedded tissue after heat-induced antigen retrieval. Antibody LS-B7332 concentration 3.75 ug/ml.

Requested From:

Japan

Laboratory Reagent For In Vitro Research Use Only

Not for resale without prior written consent from LifeSpan BioSciences, Inc.

Created on 9/24/2014

© 2014 LifeSpan BioSciences