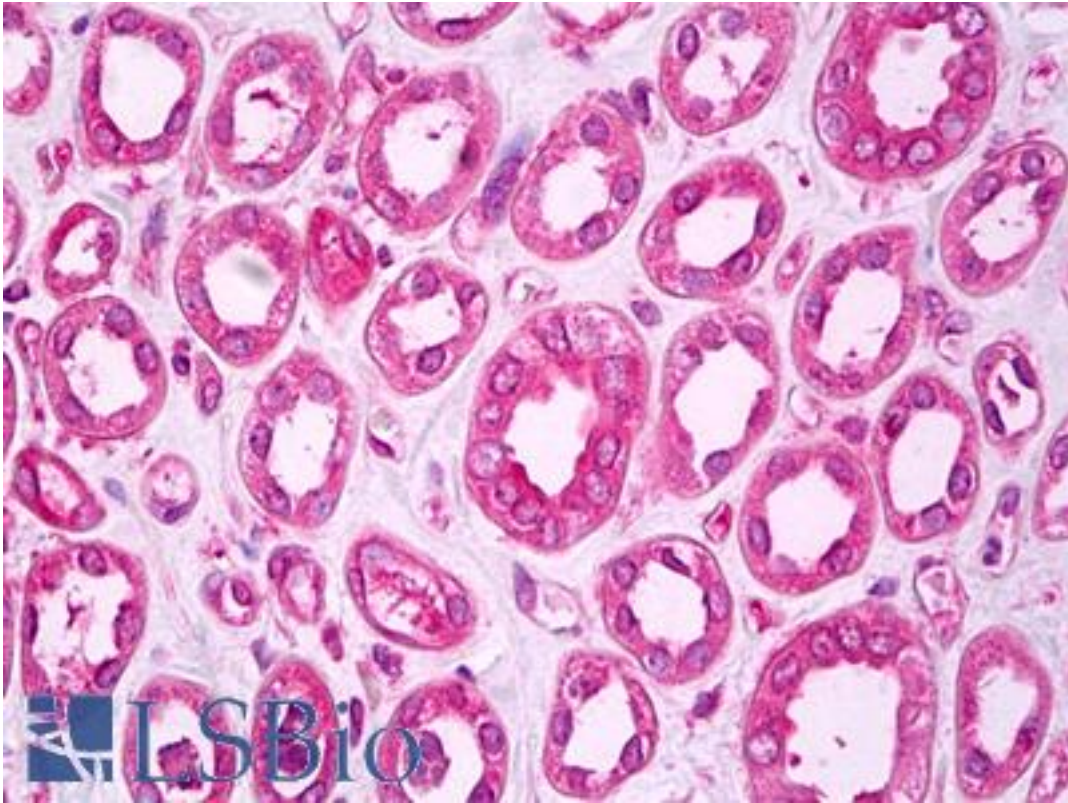


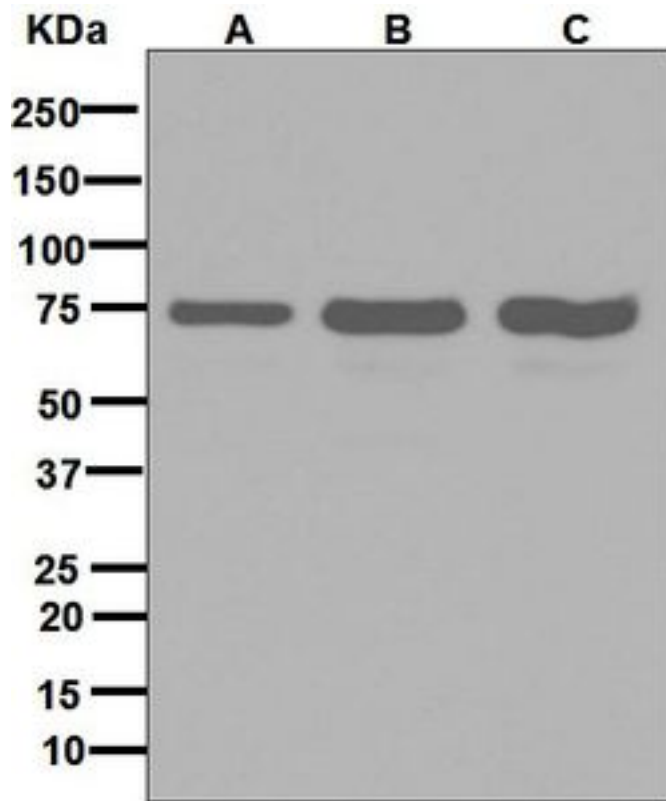
SNX1 Rabbit anti-Human Monoclonal (Internal) (EPR7178) Antibody - LS-B7322 - LSBio	
CatalogID:	LS-B7322
Validation:	This antibody replaces catalog number LS-C138989. It has been validated for use in the following assays: IHC-P.
Target:	sorting nexin 1 (SNX1)
Synonyms:	SNX1 Antibody, HsT17379 Antibody, SNX1A Antibody, Sorting nexin 1 Antibody, Sorting nexin 1A Antibody, Sorting nexin-1 Antibody, VPS5 Antibody
Host	SNX1 antibody was produced in Rabbit
Clonality:	Monoclonal
Clone Name:	EPR7178
Immunogen Species:	SNX1 antibody was raised against Human
Antigen Type:	Synthetic peptide
Immunogen:	SNX1 antibody was raised against synthetic peptide
Specificity:	Human SNX1. Species cross-reactivity is based on WB analysis.
Epitope:	Internal
Reactivity:	Human, Mouse, Rat
Purification:	Tissue culture supernatant
Presentation:	Tris-Glycine-NaCl or PBS, pH 7.2-7.4, 40-50% Glycerol, 0.01% sodium azide, 0.05% BSA
Recommended Storage:	Short term 4°C, long term aliquot and store at -20°C, avoid freeze thaw cycles.
Uses:	IHC - Paraffin (1:50), ICC (1:250 - 1:500), Western blot (1:10000 - 1:50000), Flow Cytometry (1:10 - 1:100) (Optimal dilution to be determined by the researcher)
Size:	50 µl

Immunohistochemistry Image:



Anti-SNX1 antibody IHC of human kidney, tubules. Immunohistochemistry of formalin-fixed, paraffin-embedded tissue after heat-induced antigen retrieval. Antibody LS-B7322 dilution 1:50.

Western Blot Image:



Western blot analysis on (A) HeLa, (B) HepG2, and (C) 293T cell lysates using anti-SNX1 antibody.

Requested From:

Japan

Laboratory Reagent For In Vitro Research Use Only

Not for resale without prior written consent from LifeSpan BioSciences, Inc.

Created on 9/24/2014

© 2014 LifeSpan BioSciences