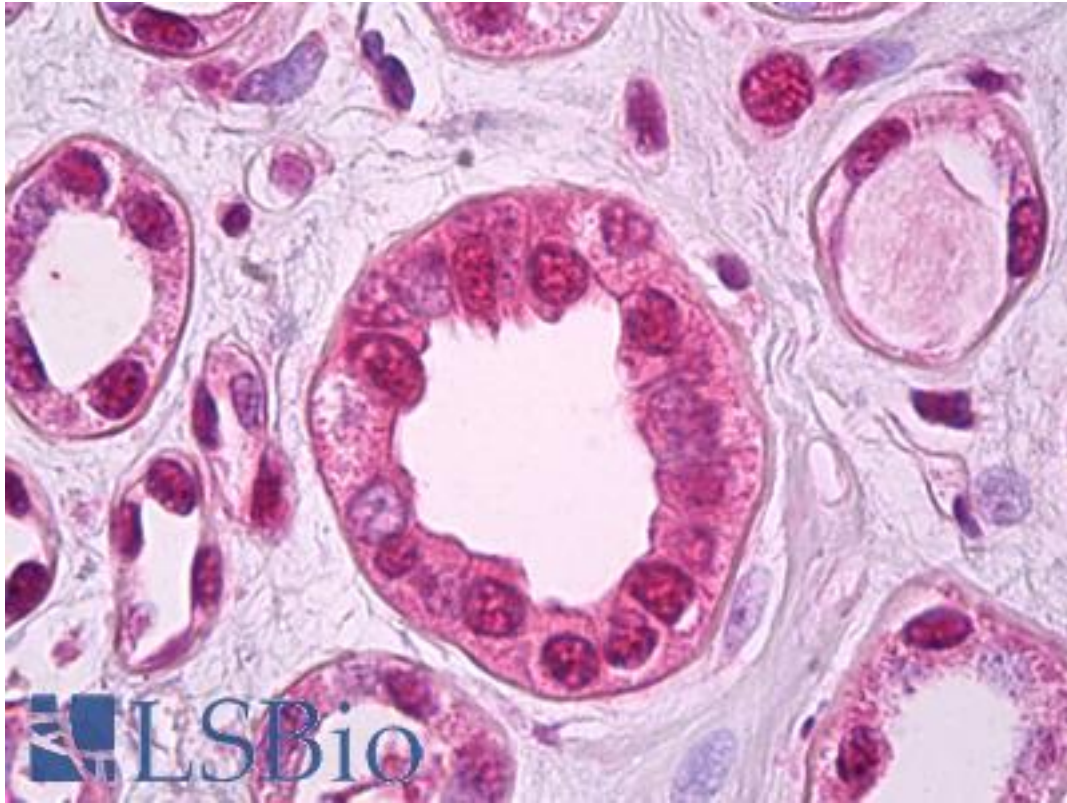


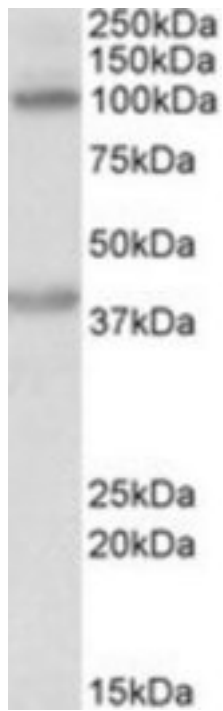
ZEB2 Goat anti-Human Polyclonal (Internal) Antibody - LS-B7316 - LSBio	
CatalogID:	LS-B7316
Validation:	This antibody replaces catalog number LS-C139764. It has been validated for use in the following assays: IHC-P.
Target:	zinc finger E-box binding homeobox 2 (ZEB2)
Synonyms:	ZEB2 Antibody, KIAA0569 Antibody, SIP1 Antibody, SMADIP1 Antibody, ZFX1B Antibody, SIP-1 Antibody, SMAD interacting protein 1 Antibody, Smad-interacting protein 1 Antibody, ZFH1B Antibody, Zinc finger homeobox 1b Antibody, HSPC082 Antibody
Host	ZEB2 antibody was produced in Goat
Clonality:	Polyclonal
Immunogen Species:	ZEB2 antibody was raised against Human
Antigen Type:	Synthetic peptide
Immunogen:	ZEB2 antibody was raised against synthetic peptide C-TDSRRQISNIKKEK from an internal region of human ZEB2 (NP_055610.1; NP_001165124.1). Percent identity by BLAST analysis: Human, Gorilla, Orangutan, Gibbon, Monkey, Marmoset, Mouse, Rat, Hamster, Elephant, Panda, Bovine, Dog, Bat, Horse, Rabbit, Xenopus (100%); Zebrafish (93%); Turkey, Stickleback, Pufferfish (86%).
Specificity:	Human ZEB2. This antibody is expected to recognize both reported isoforms (NP_055610.1; NP_001165124.1).
Epitope:	Internal
Reactivity:	Human, Gorilla, Orangutan, Gibbon, Monkey, Mouse, Rat, Bat, Bovine, Dog, Hamster, Horse, Rabbit, Xenopus
Predicted Reactivity:	Zebrafish
Purification:	Immunoaffinity purified
Presentation:	Tris-buffered saline, pH 7.3, 0.5% BSA, 0.02% sodium azide
Recommended Storage:	Short term 4°C, long term aliquot and store at -20°C, avoid freeze thaw cycles.
Usage Summary:	Peptide ELISA: antibody detection limit dilution 1:32000. Western blot: Approx 100+38kD bands observed in Human Liver lysates (calculated MW of 136kD according to NP_055610.1). Recommended concentration: 0.2-0.5 ug/ml. We believe the two observed bands represent two breakdown fragments.
Uses:	IHC - Paraffin (5 µg/ml), Western blot (0.2 - 0.5 µg/ml), ELISA (1:32000) (Optimal dilution to be determined by the researcher)
Size:	50 µg
Concentration:	0.5 mg/ml

Immunohistochemistry Image:



Anti-ZEB2 antibody IHC of human kidney. Immunohistochemistry of formalin-fixed, paraffin-embedded tissue after heat-induced antigen retrieval. Antibody LS-B7316 concentration 5 ug/ml.

Western Blot Image:



ZEB2 antibody (0.2 ug/ml) staining of Human Liver lysate (35 ug protein/ml in RIPA buffer). Primary incubation was 1 hour. Detected by chemiluminescence.

Requested From:

Japan

Laboratory Reagent For In Vitro Research Use Only

Not for resale without prior written consent from LifeSpan BioSciences, Inc.

Created on 9/24/2014

© 2014 LifeSpan BioSciences