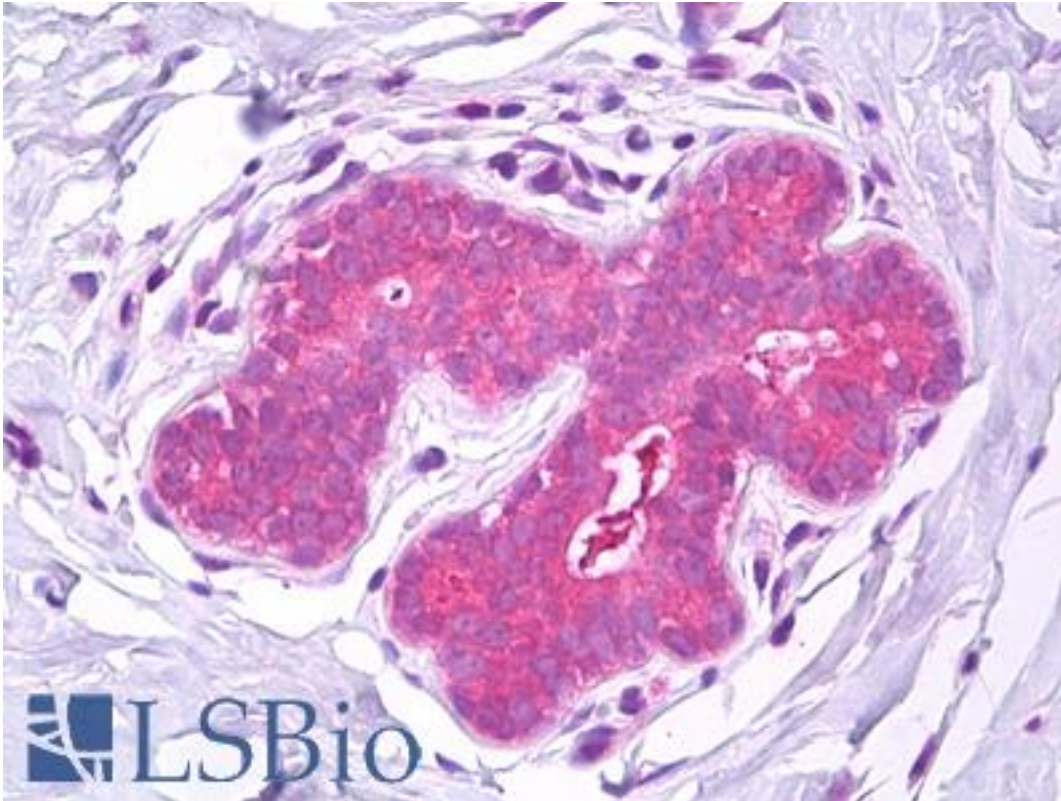


IST1 Mouse anti-Human Monoclonal Antibody - LS-B7315 - LSBio

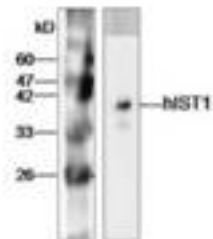
CatalogID:	LS-B7315
Validation:	This antibody replaces catalog number LS-C137503. It has been validated for use in the following assays: IHC-P.
Target:	increased sodium tolerance 1 homolog (yeast) (IST1)
Synonyms:	IST1 Antibody, CRS1 Antibody, HIST1 Antibody, IST1 homolog Antibody, KIAA0174 Antibody, OLC1 Antibody, Increased sodium tolerance-1 Antibody, SCS Antibody, Overexpressed in lung cancer 1 Antibody, TWACS3 Antibody
Host	IST1 antibody was produced in Mouse
Clonality:	Monoclonal
Isotype:	IgG1
Immunogen Species:	IST1 antibody was raised against Human
Antigen Type:	Recombinant protein
Immunogen:	IST1 antibody was raised against recombinant protein
Specificity:	Anti-hIST1 recognizes hIST1 expression in H520 whole cell lysate.
Reactivity:	Human
Purification:	Affinity purified
Presentation:	Citrate-Tris-HCl buffer, pH 7.0, 0.02% Proclin 300
Recommended Storage:	Short term 4°C, long term aliquot and store at -20°C, avoid freeze thaw cycles.
Uses:	IHC - Paraffin (10 µg/ml), Western blot (1:1000), ELISA (Optimal dilution to be determined by the researcher)
Size:	50 µl
Concentration:	1 mg/ml

Immunohistochemistry Image:



Anti-IST1 antibody IHC of human breast. Immunohistochemistry of formalin-fixed, paraffin-embedded tissue after heat-induced antigen retrieval. Antibody LS-B7315 concentration 10 ug/ml.

Western Blot Image:



Western Blot analysis

Requested From:

Japan

Laboratory Reagent For In Vitro Research Use Only

Not for resale without prior written consent from LifeSpan BioSciences, Inc.

Created on 9/24/2014

© 2014 LifeSpan BioSciences