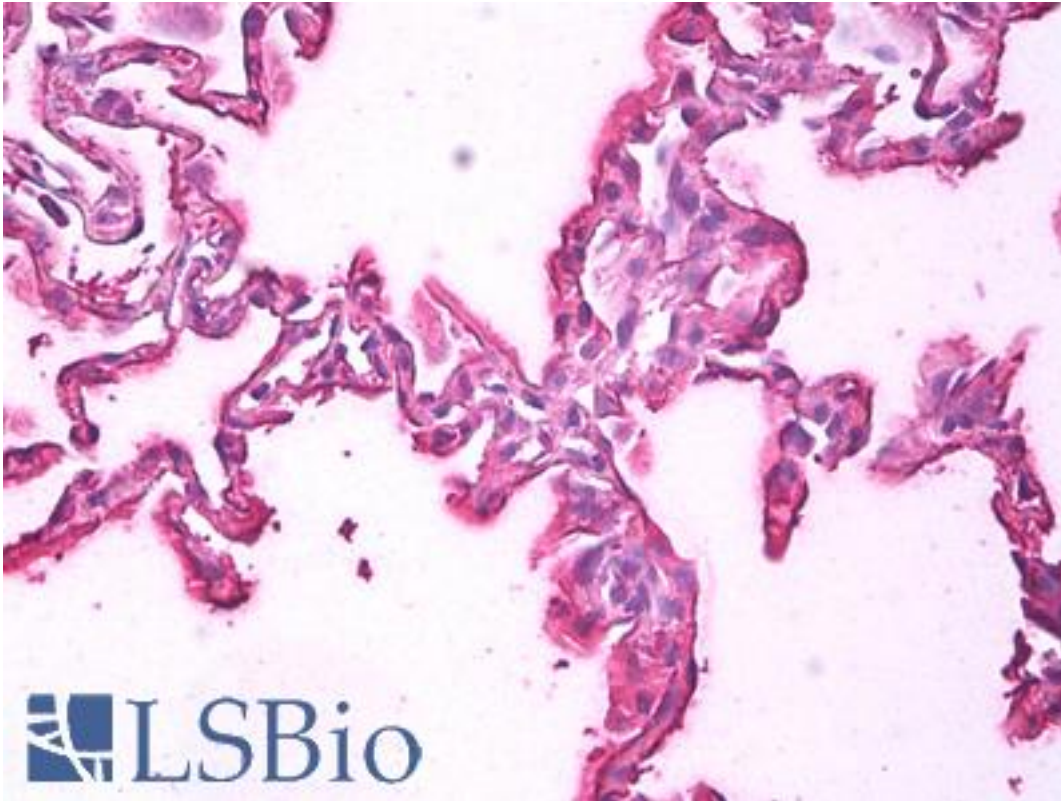


ALB / Serum Albumin Rabbit anti-Human Polyclonal Antibody - LS-B7310 - LSBio	
CatalogID:	LS-B7310
Validation:	This antibody replaces catalog number LS-C18952. It has been validated for use in the following assays: IHC-P.
Target:	albumin
Synonyms:	ALB Antibody, Albumin (32 AA) Antibody, Albumin (AA 34) Antibody, Albumin Antibody, Growth-inhibiting protein 20 Antibody, PRO1341 Antibody, PRO0883 Antibody, Serum albumin Antibody, PRO0903 Antibody
Host	ALB antibody was produced in Rabbit
Clonality:	Polyclonal
Isotype:	IgG
Immunogen Species:	ALB / Serum Albumin antibody was raised against Human
Antigen Type:	Purified protein
Immunogen:	ALB / Serum Albumin antibody was raised against human Serum Albumin
Specificity:	Human Serum Albumin.
Reactivity:	Human
Purification:	Immunoaffinity purified
Presentation:	0.02 M potassium phosphate, 0.15 M sodium chloride, pH 7.2, 0.01% sodium azide.
Recommended Storage:	Short term 4°C, long term aliquot and store at -20°C, avoid freeze thaw cycles.
Usage Summary:	Suitable for most immunological methods.
Uses:	IHC - Paraffin (5 µg/ml), Western blot (1:2000 - 1:10000), ELISA (1:20000 - 1:100000) (Optimal dilution to be determined by the researcher)
Size:	50 µg
Concentration:	1 mg/ml

Immunohistochemistry Image:



Anti-Serum Albumin antibody IHC of human lung, alveoli. Immunohistochemistry of formalin-fixed, paraffin-embedded tissue after heat-induced antigen retrieval. Antibody LS-B7310 concentration 5 ug/ml.

Requested From:

Japan

Laboratory Reagent For In Vitro Research Use Only

Not for resale without prior written consent from LifeSpan BioSciences, Inc.

Created on 9/24/2014

© 2014 LifeSpan BioSciences