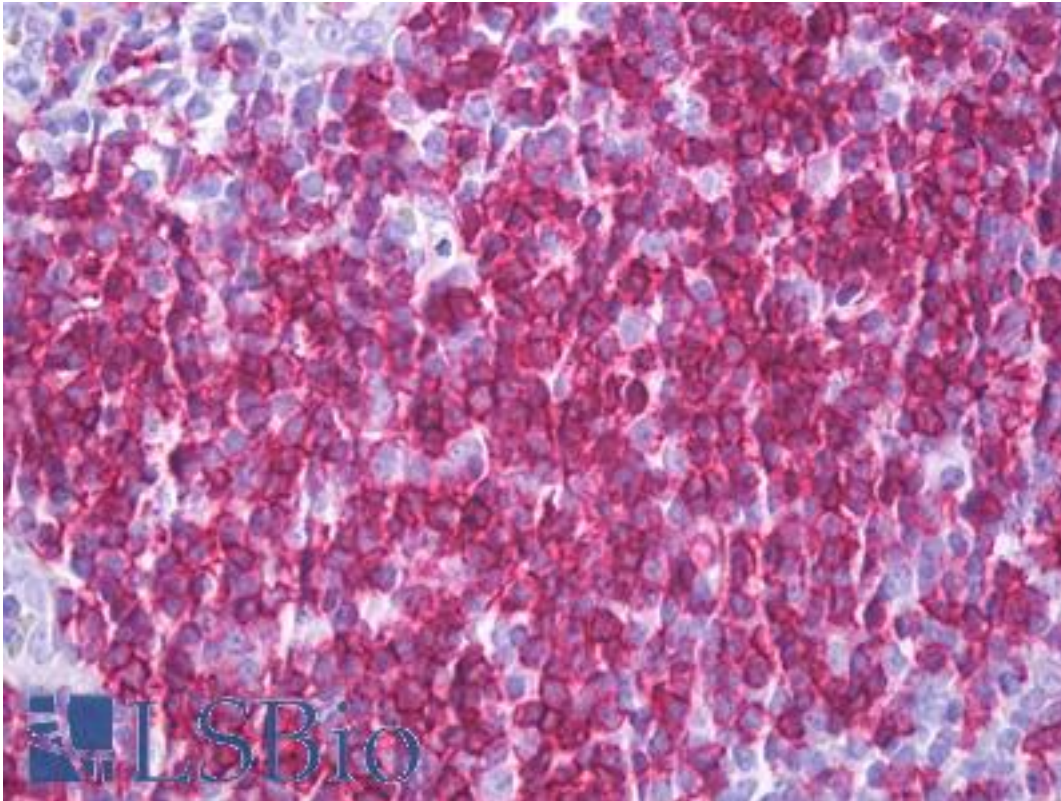


CD6 Mouse anti-Human Monoclonal (MEM-98) Antibody - LS-B7296 - LSBio	
<b>CatalogID:</b>	LS-B7296
<b>Validation:</b>	This antibody replaces catalog number LS-C44044. It has been validated for use in the following assays: IHC-P.
<b>Target:</b>	CD6 molecule
<b>Synonyms:</b>	CD6 Antibody, CD6 molecule Antibody, T12 Antibody, TP120 Antibody, CD6 antigen Antibody
<b>Host</b>	CD6 antibody was produced in Mouse
<b>Clonality:</b>	Monoclonal
<b>Isotype:</b>	IgG1
<b>Clone Name:</b>	MEM-98
<b>Immunogen Species:</b>	CD6 antibody was raised against Human
<b>Antigen Type:</b>	Purified protein
<b>Immunogen:</b>	CD6 antibody was raised against purified CD6 antigen.
<b>Specificity:</b>	Recognizes the human CD6 cell surface antigen, a 120kD glycoprotein expressed by mature T lymphocytes
<b>Reactivity:</b>	Human
<b>Purification:</b>	Protein G purified
<b>Presentation:</b>	PBS, pH 7.4, 0.09% sodium azide.
<b>Recommended Storage:</b>	Short term 4°C, long term aliquot and store at -20°C, avoid freeze thaw cycles.
<b>Usage Summary:</b>	Flow Cytometry: Use 10 ul of the suggested working dilution to label 10 <sup>6</sup> cells or 100 ul whole blood.
<b>Uses:</b>	IHC - Paraffin (10 µg/ml), Western blot, Immunoprecipitation, Flow Cytometry (1:1) (Optimal dilution to be determined by the researcher)
<b>Size:</b>	50 µg
<b>Concentration:</b>	1 mg/ml

**Immunohistochemistry Image:**



Anti-CD6 antibody IHC of human tonsil. Immunohistochemistry of formalin-fixed, paraffin-embedded tissue after heat-induced antigen retrieval. Antibody LS-B7296 concentration 10 ug/ml.

**Requested From:**

Japan

Laboratory Reagent For In Vitro Research Use Only

Not for resale without prior written consent from LifeSpan BioSciences, Inc.

Created on 9/24/2014

© 2014 LifeSpan BioSciences