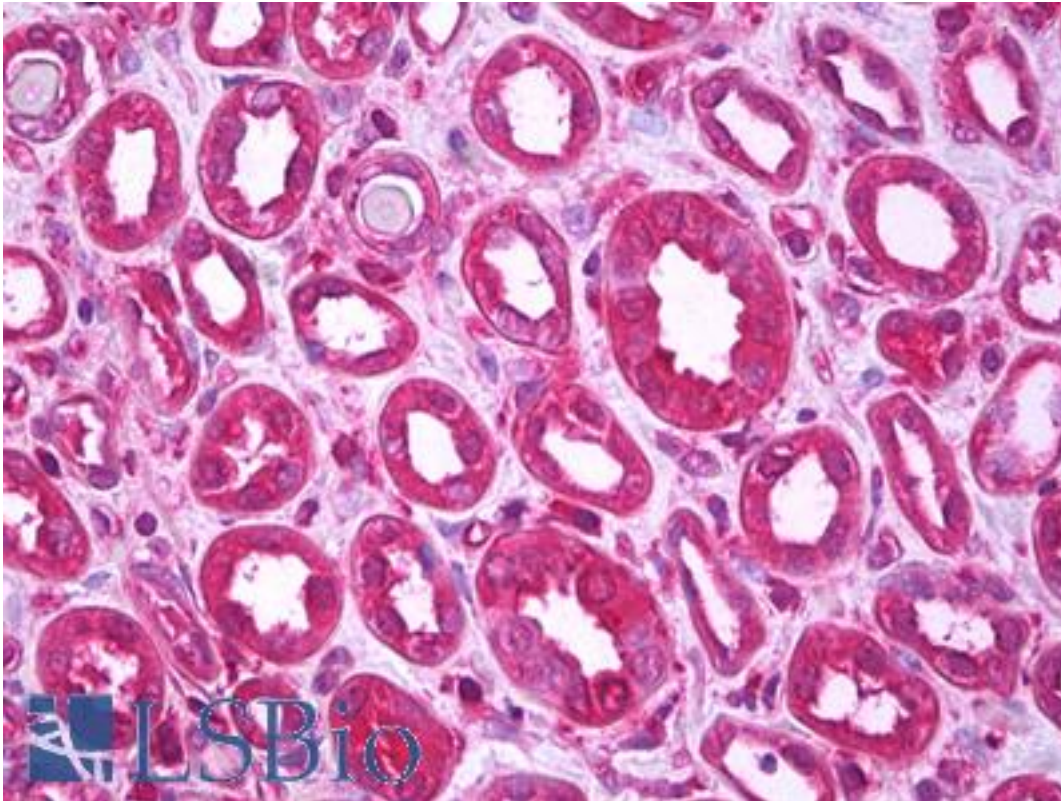


NOTCH4 Mouse anti-Human Monoclonal (L5C5) Antibody - LS-B7289 - LSBio	
CatalogID:	LS-B7289
Validation:	This antibody replaces catalog number LS-C37774. It has been validated for use in the following assays: IHC-P.
Target:	notch 4 (NOTCH4)
Synonyms:	NOTCH4 Antibody, HNotch4 Antibody, Notch (Drosophila) homolog 4 Antibody, Notch homolog 4 (Drosophila) Antibody, Notch homolog 4 Antibody, INT3 Antibody, Notch 4 Antibody
Host	NOTCH4 antibody was produced in Mouse
Clonality:	Monoclonal
Isotype:	IgG1
Clone Name:	L5C5
Immunogen Species:	NOTCH4 antibody was raised against Human
Antigen Type:	Recombinant protein
Immunogen:	NOTCH4 antibody was raised against recombinant protein consisting of the Ankyrin repeat domain of human Notch4.
Specificity:	Detects levels of the transfected intracellular region of human Notch4 protein.
Reactivity:	Human
Purification:	Ascites
Presentation:	Supplied as a liquid in 10mM sodium HEPES, pH 7.5, 150mM sodium chloride, 0.1mg/ml BSA, <0.02% sodium azide, 50% glycerol
Recommended Storage:	Short term 4°C, long term aliquot and store at -20°C, avoid freeze thaw cycles.
Usage Summary:	Suitable for use in ELISA, Western Blot and Immunoprecipitation. Western blot 1:1000. Immunoprecipitation 1:50.
Uses:	IHC - Paraffin (1:50), Western blot (1:1000), Immunoprecipitation (1:50), ELISA (Optimal dilution to be determined by the researcher)
Size:	50 µl

Immunohistochemistry Image:



Anti-NOTCH4 antibody IHC of human kidney. Immunohistochemistry of formalin-fixed, paraffin-embedded tissue after heat-induced antigen retrieval. Antibody LS-B7289 dilution 1:50.

Requested From:

Japan

Laboratory Reagent For In Vitro Research Use Only

Not for resale without prior written consent from LifeSpan BioSciences, Inc.

Created on 9/24/2014

© 2014 LifeSpan BioSciences