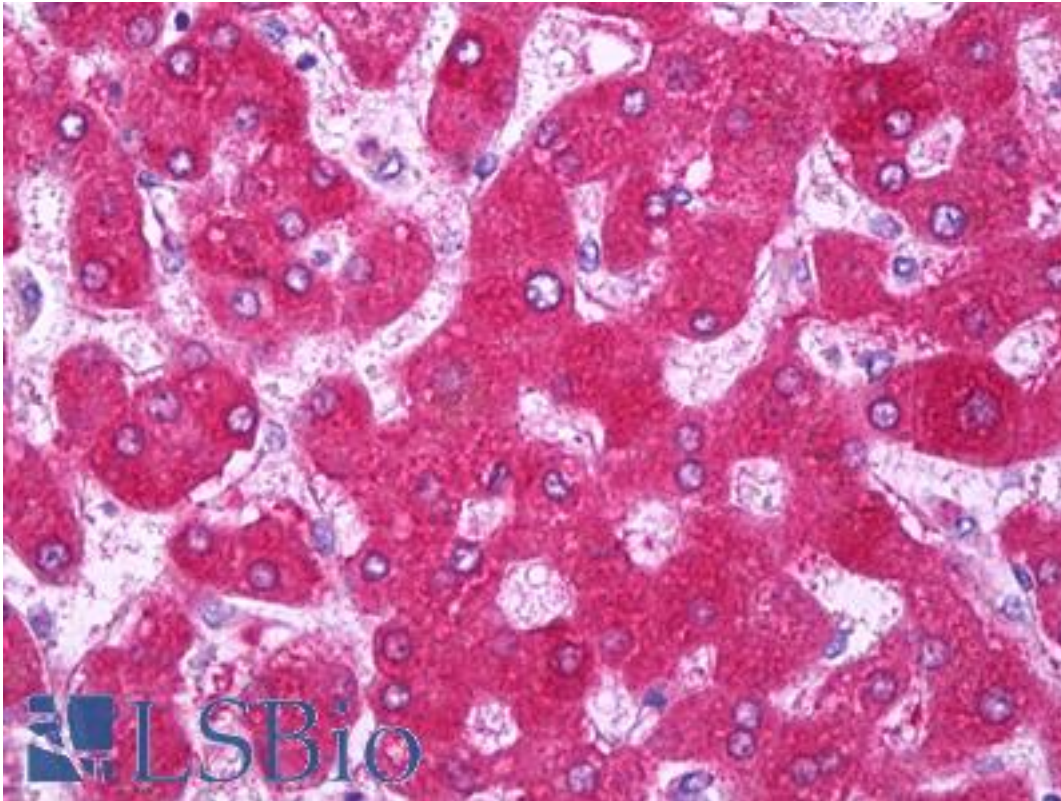


CYP2E1 Rabbit anti-Human Polyclonal Antibody - LS-B7286 - LSBio

CatalogID:	LS-B7286
Validation:	This antibody replaces catalog number LS-C36115. It has been validated for use in the following assays: IHC-P.
Target:	cytochrome P450, family 2, subfamily E, polypeptide 1 (CYP2E1)
Synonyms:	CYP2E1 Antibody, 4-nitrophenol 2-hydroxylase Antibody, CPE1 Antibody, Cytochrome p450 Ile1 Antibody, Cytochrome P450-J Antibody, p450C2E Antibody, p450-J Antibody, CYP2E Antibody, CYP1IE1 Antibody, Cytochrome P450 2E1 Antibody
Family / Subfamily:	Cytochrome P450 / not assigned-Cytochrome P450
Host	CYP2E1 antibody was produced in Rabbit
Clonality:	Polyclonal
Isotype:	IgG
Immunogen Species:	CYP2E1 antibody was raised against Human
Immunogen:	CYP2E1 antibody was raised against recombinant human P450 2E1 expressed in E. coli.
Specificity:	Recognizes a band (P450 2E1) in human liver microsomes. Reactive with 0.2 ug of recombinant human P450 2E1. Only slightly cross-reacts with recombinant human P450 1A1 after prolonged incubation. Does not cross-react with recombinant human cytochromes P450 1A2, 3A4 or 2C10.
Reactivity:	Human, Rat
Purification:	Purified
Presentation:	20 mM phosphate buffer, pH 8.0.
Recommended Storage:	Long term: -20°C; Short term: +4°C; Avoid freeze-thaw cycles.
Usage Summary:	Suitable for use in Western Blot. Western Blot: 1:1000 will yield a positive result with 0.2 ug of recombinant human cytochrome P450 2E1 using alkaline phosphatase-conjugated anti-rabbit IgG secondary antibody. Optimum dilutions to be determined by researcher.
Uses:	IHC - Paraffin (5 µg/ml), Western blot (1:1000) (Optimal dilution to be determined by the researcher)
Size:	50 µl
Concentration:	5 mg/ml

Immunohistochemistry Image:



Anti-CYP2E1 antibody IHC of human liver. Immunohistochemistry of formalin-fixed, paraffin-embedded tissue after heat-induced antigen retrieval. Antibody LS-B7286 concentration 5 ug/ml.

Requested From:

Japan

Laboratory Reagent For In Vitro Research Use Only

Not for resale without prior written consent from LifeSpan BioSciences, Inc.

Created on 9/24/2014

© 2014 LifeSpan BioSciences