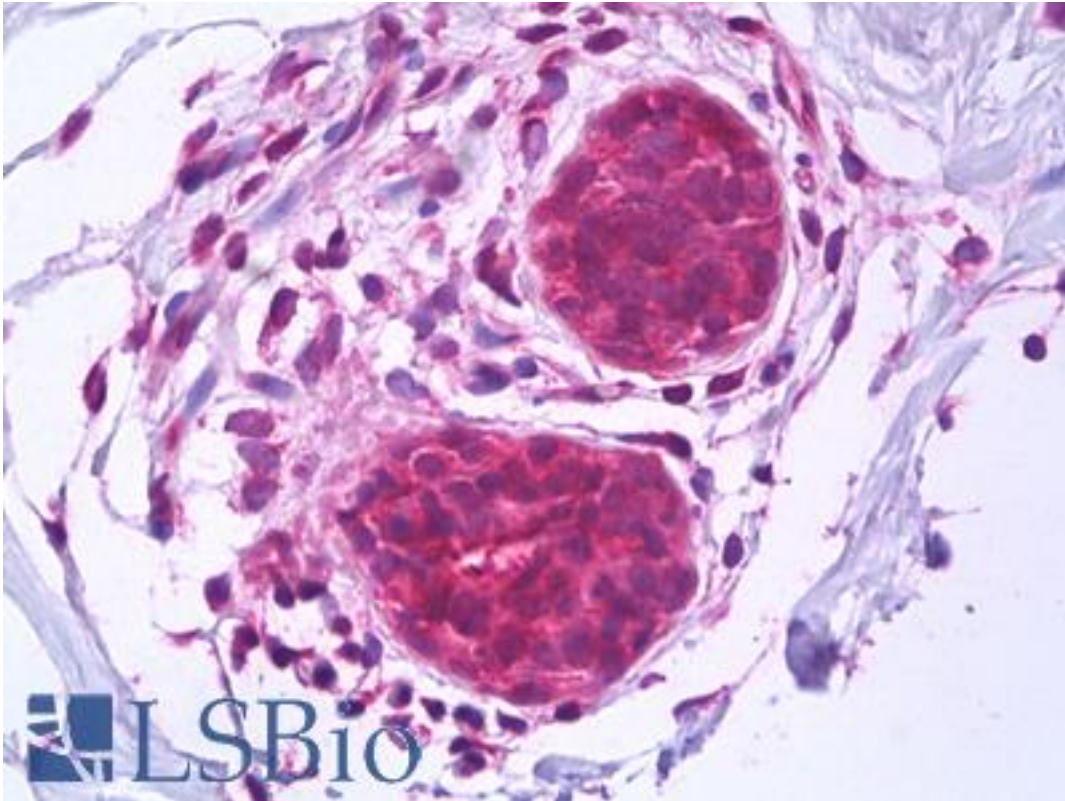


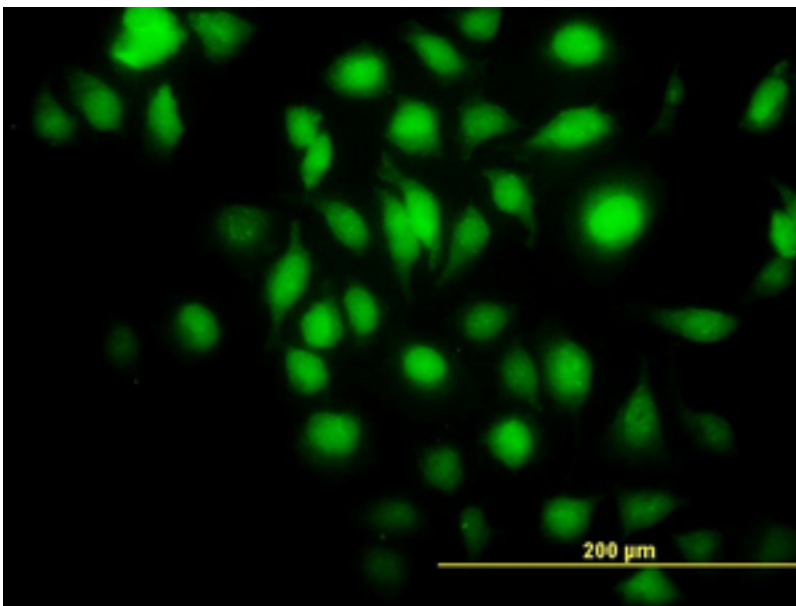
BAG1 / BAG-1 Mouse anti-Human Monoclonal (2D3) Antibody - LS-B7266 - LSBio	
CatalogID:	LS-B7266
Validation:	This antibody replaces catalog number LS-C133060. It has been validated for use in the following assays: IHC-P.
Target:	BCL2-associated athanogene (BAG1)
Synonyms:	BAG1 Antibody, Bcl-2-associated athanogene 1 Antibody, Bcl-2-binding protein Antibody, Bcl2 binding protein bag1 Antibody, BCL2-associated athanogene Antibody, BAG-1 Antibody, Bcl2 binding athanogene1 Antibody, HAP Antibody, RAP46 Antibody
Host	BAG1 antibody was produced in Mouse
Clonality:	Monoclonal
Isotype:	IgG2a,k
Clone Name:	2D3
Immunogen Species:	BAG1 / BAG-1 antibody was raised against Human
Immunogen:	BAG1 / BAG-1 antibody was raised against bAG1 (NP_004314, 241 a.a. ~ 346 a.a) partial recombinant protein with GST tag. MW of the GST tag alone is 26 KDa.
Specificity:	Human Bag1
Reactivity:	Human, Mouse, Rat
Purification:	Protein A purified
Presentation:	PBS, pH 7.2. Sourced in Ascites.
Recommended Storage:	Short term 4°C, long term aliquot and store at -20°C, avoid freeze thaw cycles.
Usage Summary:	Immunohistochemistry: Formalin-fixed paraffin-embedded sections. Sandwich ELISA: Recombinant protein. Western Blot: Cell lysate, Cell lysate, Cell lysate, Cell lysate, Cell lysate, Cell lysate, Recombinant protein.
Uses:	IHC - Paraffin (10 µg/ml), Immunofluorescence (35 µg/ml), Western blot (1:500 - 1:1000), ELISA (Optimal dilution to be determined by the researcher)
Size:	50 µg
Concentration:	1 mg/ml

Immunohistochemistry Image:



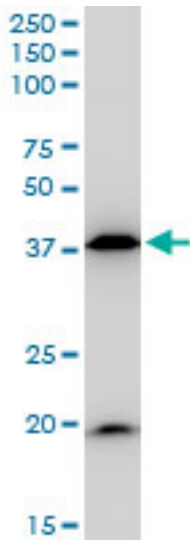
Anti-BAG1 antibody IHC of human breast, epithelium. Immunohistochemistry of formalin-fixed, paraffin-embedded tissue after heat-induced antigen retrieval. Antibody LS-B7266 concentration 10 ug/ml.

Immunofluorescence Image:



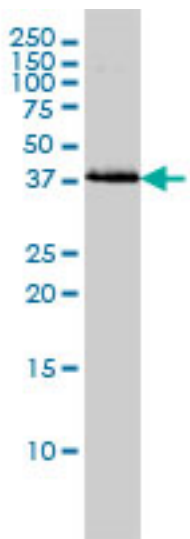
Immunofluorescence of monoclonal antibody to BAG1 on HeLa cell. [antibody concentration 35 ug/ml]

Western Blot Image:



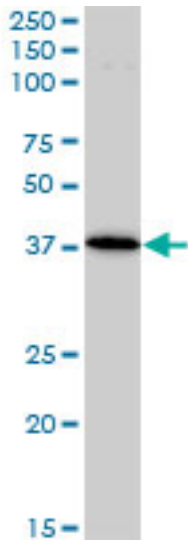
BAG1 monoclonal antibody (M02), clone 2D3. Western blot of BAG1 expression in NIH/3T3.

Western Blot Image:



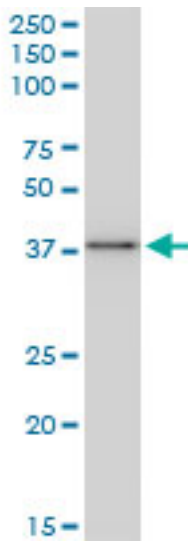
BAG1 monoclonal antibody (M02), clone 2D3 Western blot of BAG1 expression in HeLa.

Western Blot Image:



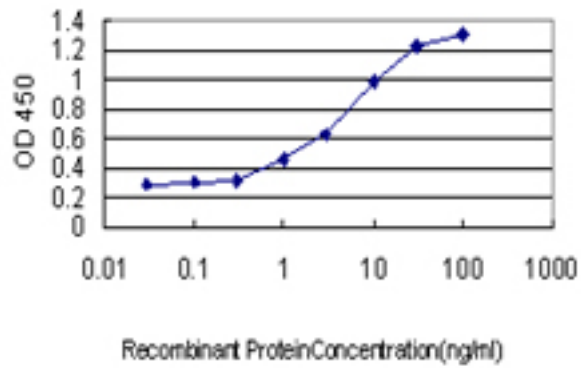
BAG1 monoclonal antibody (M02), clone 2D3. Western blot of BAG1 expression in Jurkat.

Western Blot Image:



BAG1 monoclonal antibody (M02), clone 2D3. Western blot of BAG1 expression in Raw 264.7.

ELISA Image:



Detection limit for recombinant GST tagged BAG1 is approximately 0.03 ng/ml as a capture antibody.

Requested From:

Japan

Laboratory Reagent For In Vitro Research Use Only

Not for resale without prior written consent from LifeSpan BioSciences, Inc.

Created on 9/24/2014

© 2014 LifeSpan BioSciences