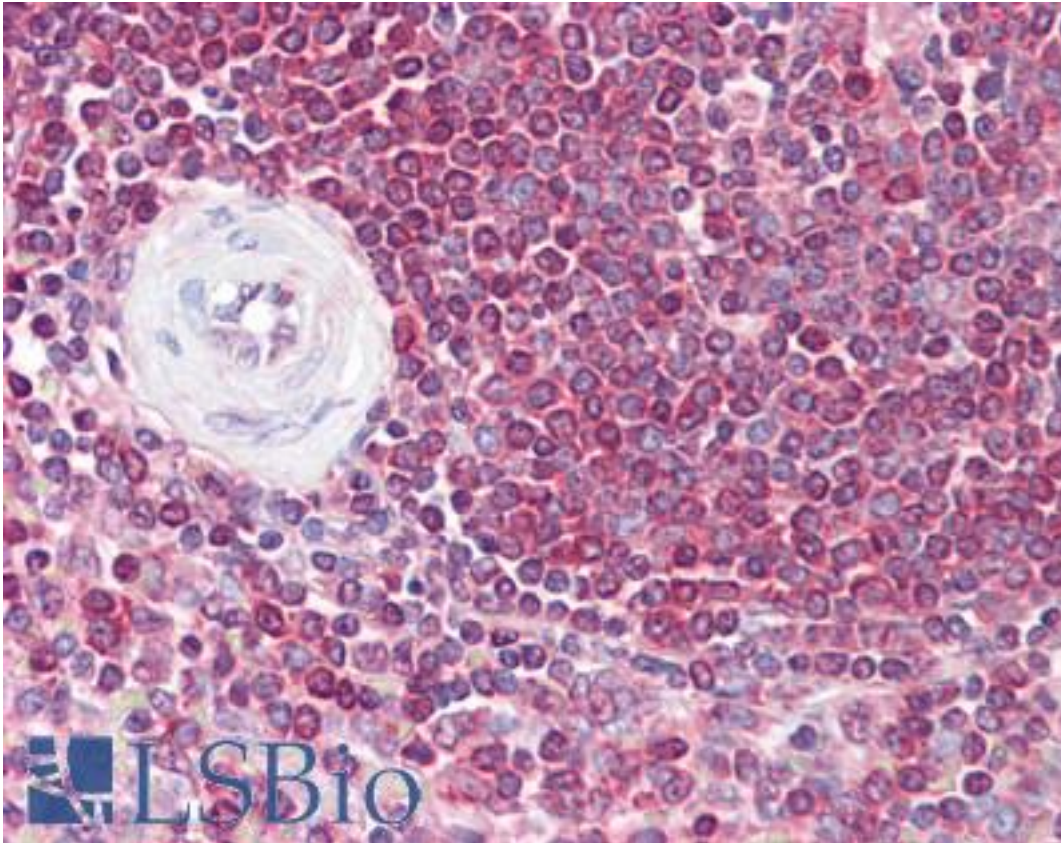


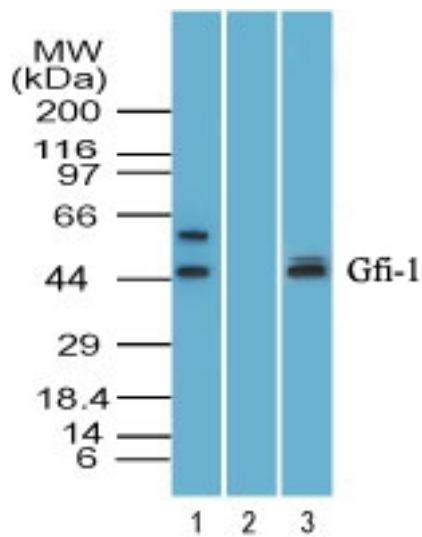
GFI1 Rabbit anti-Human Polyclonal (aa280-330) Antibody - LS-B7250 - LSBio	
<b>CatalogID:</b>	LS-B7250
<b>Validation:</b>	This antibody replaces catalog number LS-C148776. It has been validated for use in the following assays: IHC-P.
<b>Target:</b>	growth factor independent 1 transcription repressor (GFI1)
<b>Synonyms:</b>	GFI1 Antibody, Growth factor independence-1 Antibody, GFI-1 Antibody, GFI1A Antibody, SCN2 Antibody, Zinc finger protein 163 Antibody, Zinc finger protein Gfi-1 Antibody, ZNF163 Antibody, Growth factor independent 1 Antibody
<b>Host</b>	GFI1 antibody was produced in Rabbit
<b>Clonality:</b>	Polyclonal
<b>Immunogen Species:</b>	GFI1 antibody was raised against Human
<b>Antigen Type:</b>	Synthetic peptide
<b>Immunogen:</b>	GFI1 antibody was raised against amino acids 280-330 of human Zinc finger protein Gfi-1.
<b>Specificity:</b>	Human GFI1
<b>Epitope:</b>	aa280-330
<b>Reactivity:</b>	Human, Mouse, Rat, Bovine, Chicken
<b>Purification:</b>	Protein A purified
<b>Presentation:</b>	PBS, 0.05% BSA, 0.05% sodium azide
<b>Recommended Storage:</b>	Store at 4°C for short term applications. For long term storage, aliquot and store at -20°C.
<b>Uses:</b>	IHC - Paraffin (5 - 10 µg/ml), Western blot (6 - 8 µg/ml) (Optimal dilution to be determined by the researcher)
<b>Size:</b>	50 µg
<b>Concentration:</b>	0.5 mg/ml

**Immunohistochemistry Image:**



Anti-GFI1 antibody IHC of human spleen. Immunohistochemistry of formalin-fixed, paraffin-embedded tissue after heat-induced antigen retrieval. Antibody LS-B7250 concentration 5 ug/ml.

**Western Blot Image:**



Western blot of Zinc finger protein Gfi-1 in human HepG2 cell lysate in the 1) absence and 2) presence of immunizing peptide, and 3) mouse RAW cell lysate using LS-B7250 at 6 ug/ml. Goat anti-rabbit Ig HRP secondary antibody, and PicoTect ECL substrate solution were used for this test.

<b>Requested From:</b>	Japan
Laboratory Reagent For In Vitro Research Use Only	
Not for resale without prior written consent from LifeSpan BioSciences, Inc.	
Created on 9/24/2014	
© 2014 LifeSpan BioSciences	