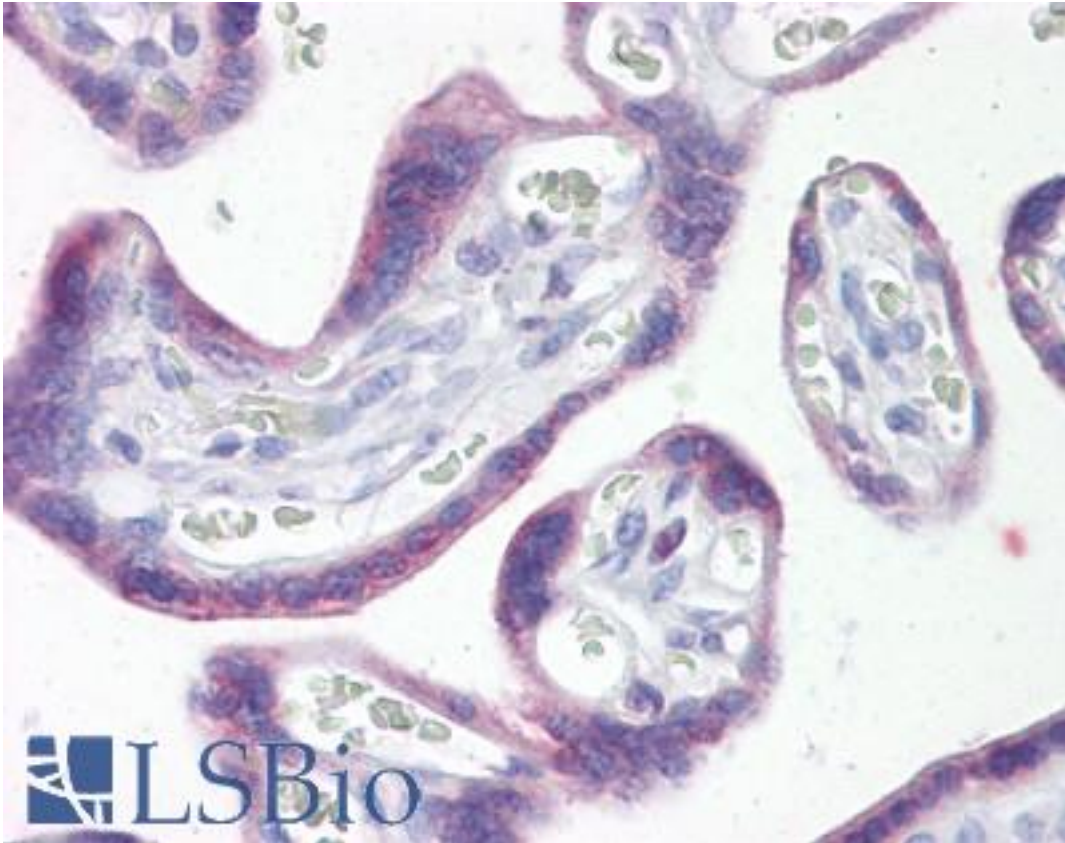


SNAI1 / SNAIL-1 Rabbit anti-Human Polyclonal (aa80-130) Antibody - LS-B7247 - LSBio	
CatalogID:	LS-B7247
Validation:	This antibody replaces catalog number LS-C148732. It has been validated for use in the following assays: IHC-P.
Target:	snail family zinc finger 1 (SNAI1)
Synonyms:	SNAI1 Antibody, DJ710H13.1 Antibody, Protein sna Antibody, SNAIL Antibody, Snail 1 Antibody, Snail 1, zinc finger protein Antibody, Snail homolog 1 (Drosophila) Antibody, SNA Antibody, Snail 1 homolog Antibody, Protein snail homolog 1 Antibody, SNAH Antibody, Snail 1 zinc finger protein Antibody, Zinc finger protein SNAI1 Antibody, SLUGH2 Antibody, SNAIL1 Antibody
Host	SNAI1 antibody was produced in Rabbit
Clonality:	Polyclonal
Immunogen Species:	SNAI1 / SNAIL-1 antibody was raised against Human
Antigen Type:	Synthetic peptide
Immunogen:	SNAI1 / SNAIL-1 antibody was raised against a portion of amino acids 80-130 of human SNAI1 was used as the immunogen.
Specificity:	Human SNAI1 / SNAIL
Epitope:	aa80-130
Reactivity:	Human, Mouse, Dog, Horse
Purification:	Protein A purified
Presentation:	PBS, 0.05% BSA, 0.05% sodium azide
Recommended Storage:	Store at 4°C for short term applications. For long term storage, aliquot and store at -20°C.
Uses:	IHC - Paraffin (10 µg/ml), Western blot (3 - 5 µg/ml) (Optimal dilution to be determined by the researcher)
Size:	50 µg
Concentration:	0.5 mg/ml

Immunohistochemistry Image:



Anti-SNAI1 / SNAIL antibody IHC of human placenta. Immunohistochemistry of formalin-fixed, paraffin-embedded tissue after heat-induced antigen retrieval. Antibody LS-B7247 concentration 10 ug/ml.

Requested From:

Japan

Laboratory Reagent For In Vitro Research Use Only

Not for resale without prior written consent from LifeSpan BioSciences, Inc.

Created on 9/24/2014

© 2014 LifeSpan BioSciences