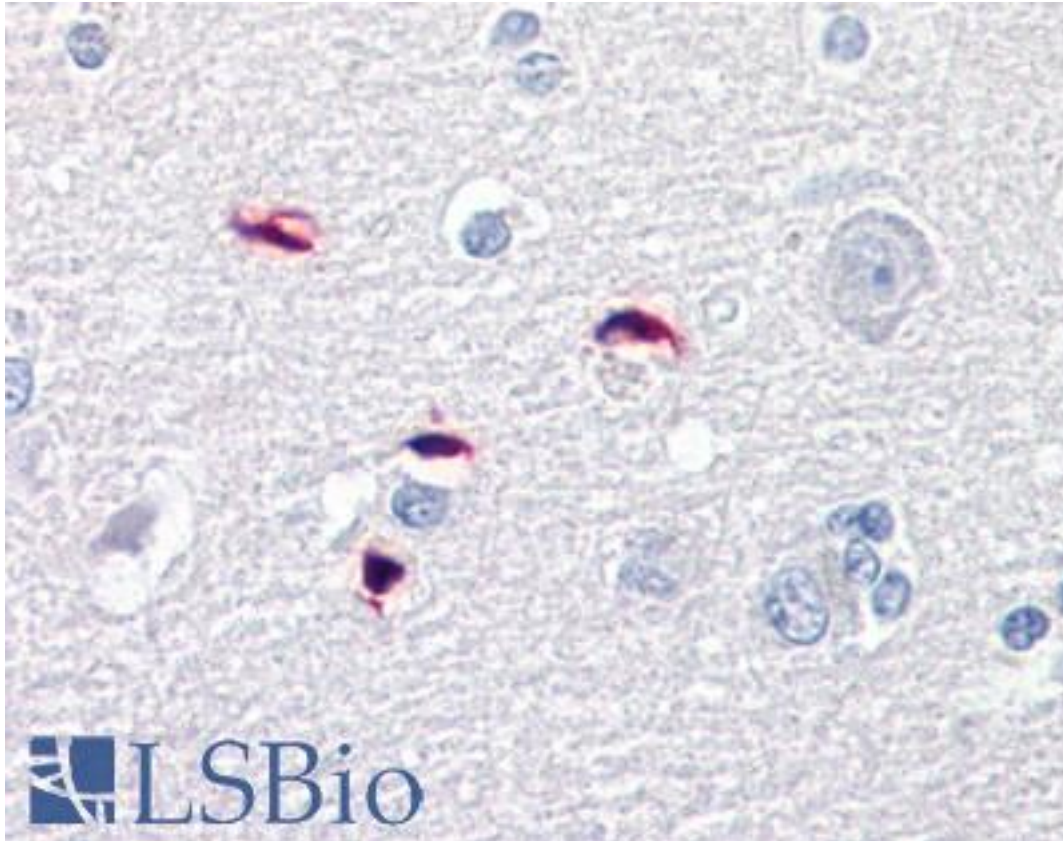


**GLI / GLI1 Rabbit anti-Human Polyclonal (aa940-990) Antibody - LS-B7244 - LSBio**

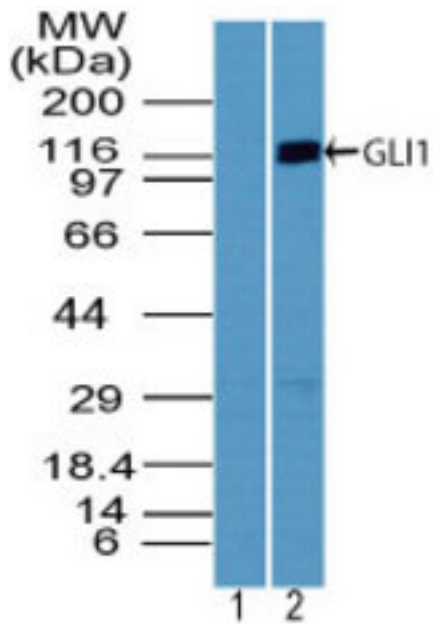
<b>CatalogID:</b>	LS-B7244
<b>Validation:</b>	This antibody replaces catalog number LS-C148683. It has been validated for use in the following assays: IHC-P.
<b>Target:</b>	GLI family zinc finger 1 (GLI1)
<b>Synonyms:</b>	GLI1 Antibody, Gli-1 Antibody, GLI family zinc finger 1 Antibody, Glioma-associated oncogene Antibody, Glioma-associated oncogene 1 Antibody, Oncogene GLI Antibody, GLI Antibody, Zinc finger protein GLI1 Antibody
<b>Host</b>	GLI1 antibody was produced in Rabbit
<b>Clonality:</b>	Polyclonal
<b>Immunogen Species:</b>	GLI / GLI1 antibody was raised against Human
<b>Antigen Type:</b>	Synthetic peptide
<b>Immunogen:</b>	GLI / GLI1 antibody was raised against a portion of amino acids 940-990 of human GLI1 was used as the immunogen.
<b>Specificity:</b>	Human GLI1
<b>Epitope:</b>	aa940-990
<b>Reactivity:</b>	Human, Monkey
<b>Purification:</b>	Protein A purified
<b>Presentation:</b>	PBS, 0.2% gelatin, 0.05% sodium azide
<b>Recommended Storage:</b>	Store at 4°C for short term applications. For long term storage, aliquot and store at -20°C.
<b>Uses:</b>	IHC - Paraffin (5 - 10 µg/ml), Western blot (1 - 3 µg/ml) (Optimal dilution to be determined by the researcher)
<b>Size:</b>	50 µg
<b>Concentration:</b>	0.5 mg/ml

**Immunohistochemistry Image:**



Anti-GLI1 antibody IHC of human brain, cortex. Immunohistochemistry of formalin-fixed, paraffin-embedded tissue after heat-induced antigen retrieval. Antibody LS-B7244 concentration 5 ug/ml.

**Western Blot Image:**



Western blot of GLI1 in human kidney lysate using 1) pre-immune sera at 1:5000 dilution and 2) LS-B7244 at 1 ug/ml. Goat anti-rabbit Ig HRP secondary antibody, and PicoTect ECL substrate solution, were used for this test.

**Requested From:**

Japan

Laboratory Reagent For In Vitro Research Use Only

Not for resale without prior written consent from LifeSpan BioSciences, Inc.

Created on 9/24/2014

© 2014 LifeSpan BioSciences