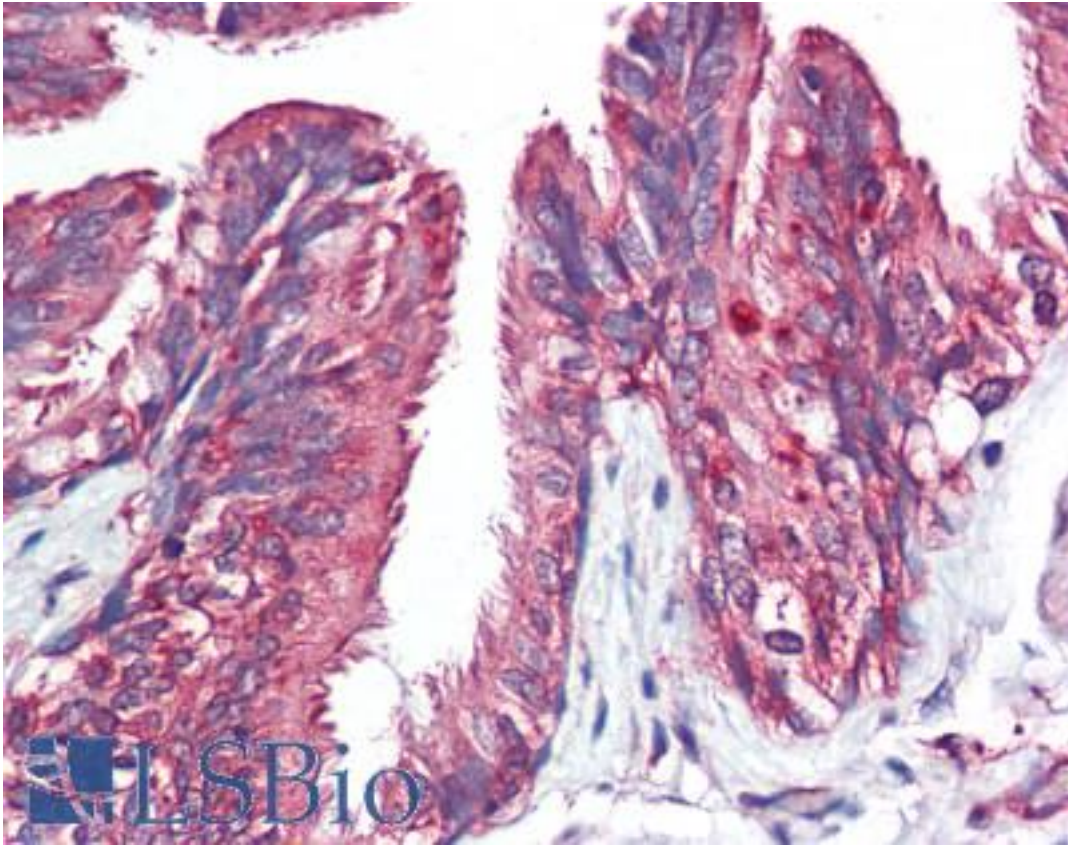


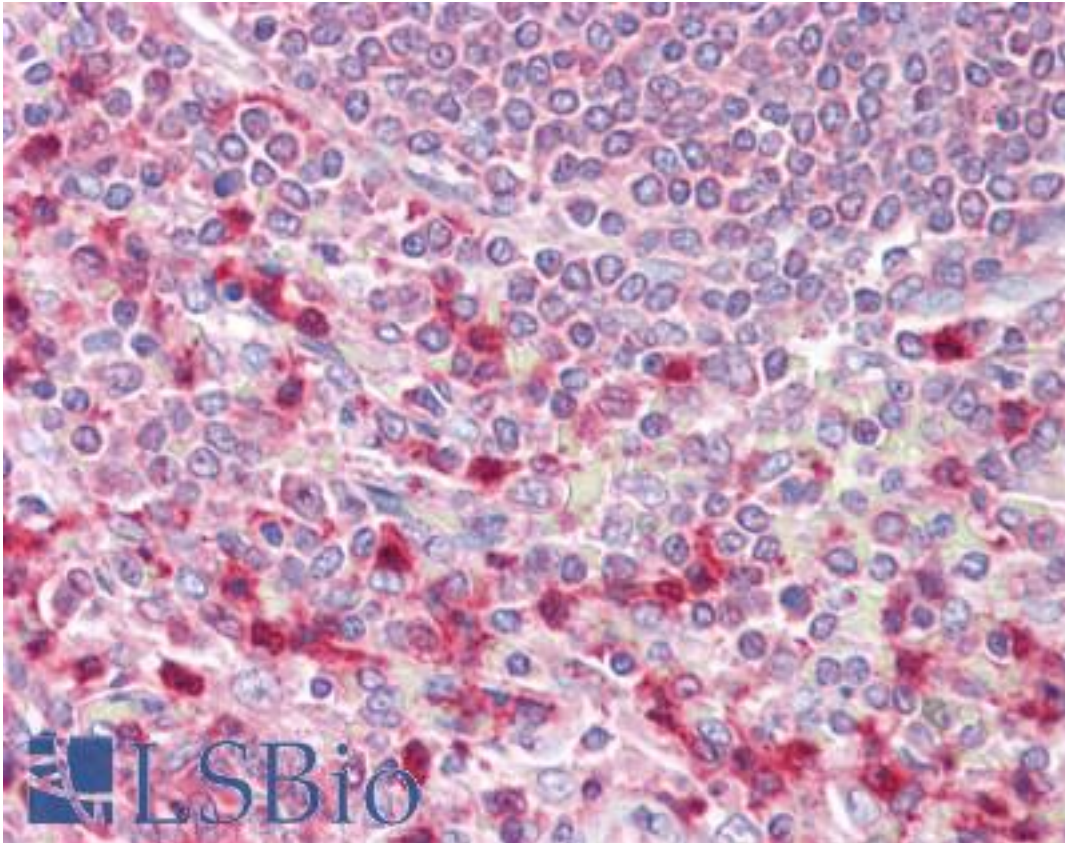
| EIF4B Rabbit anti-Human Polyclonal (aa570-630) Antibody - LS-B7241 - LSBio | |
|--|---|
| CatalogID: | LS-B7241 |
| Validation: | This antibody replaces catalog number LS-C148507. It has been validated for use in the following assays: IHC-P. |
| Target: | eukaryotic translation initiation factor 4B (EIF4B) |
| Synonyms: | EIF4B Antibody, EIF-4B Antibody, PRO1843 Antibody |
| Host | EIF4B antibody was produced in Rabbit |
| Clonality: | Polyclonal |
| Immunogen Species: | EIF4B antibody was raised against Human |
| Antigen Type: | Synthetic peptide |
| Immunogen: | EIF4B antibody was raised against a portion of amino acids 570-630 of human eIF4B was used as the immunogen. |
| Specificity: | Human EIF4B |
| Epitope: | aa570-630 |
| Reactivity: | Human, Chimpanzee, Orangutan, Monkey, Mouse |
| Purification: | Immunoaffinity purified |
| Presentation: | PBS, 0.05% BSA, 0.05% sodium azide |
| Recommended Storage: | Store at 4°C for short term applications. For long term storage, aliquot and store at -20°C. |
| Uses: | IHC - Paraffin (10 µg/ml), Western blot (0.01 - 1 µg/ml) (Optimal dilution to be determined by the researcher) |
| Size: | 50 µg |
| Concentration: | 0.5 mg/ml |

Immunohistochemistry Image:



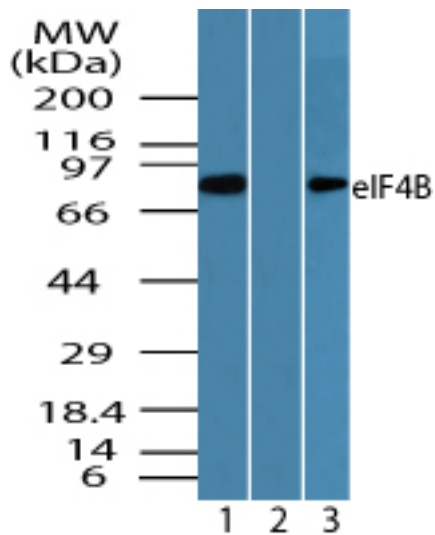
Anti-EIF4B antibody IHC of human lung, respiratory epithelium. Immunohistochemistry of formalin-fixed, paraffin-embedded tissue after heat-induced antigen retrieval. Antibody LS-B7241 concentration 10 ug/ml.

Immunohistochemistry Image:



Anti-eIF4B antibody IHC of human spleen. Immunohistochemistry of formalin-fixed, paraffin-embedded tissue after heat-induced antigen retrieval. Antibody LS-B7241 concentration 10 ug/ml.

Western Blot Image:



Western blot of eIF4B in K562 cell lysate in the 1) absence and 2) presence of immunizing peptide, and 3) RAW cell lysate using LS-B7241 at 0.005 ug/ml, 0.005 ug/ml and 1.0 ug/ml respectively.

Requested From:

Japan

Laboratory Reagent For In Vitro Research Use Only

Not for resale without prior written consent from LifeSpan BioSciences, Inc.

Created on 9/24/2014

© 2014 LifeSpan BioSciences