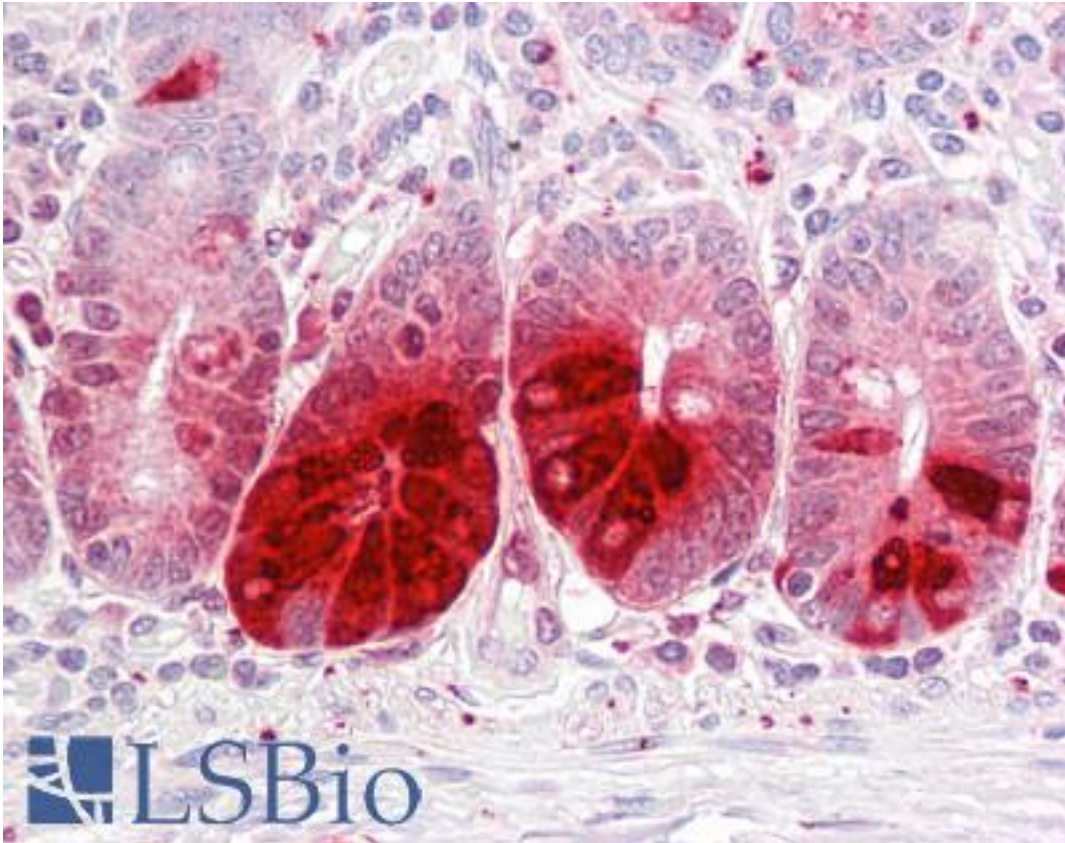


REG3A Rabbit anti-Human Polyclonal (aa1-50) Antibody - LS-B7238 - LSBio	
<b>CatalogID:</b>	LS-B7238
<b>Validation:</b>	This antibody replaces catalog number LS-C148565. It has been validated for use in the following assays: IHC-P.
<b>Target:</b>	regenerating islet-derived 3 alpha (REG3A)
<b>Synonyms:</b>	REG3A Antibody, INGAP Antibody, HIP Antibody, PAP homologous protein Antibody, PAP1 Antibody, REG-III Antibody, REG3 Antibody, PAP-H Antibody, Reg III-alpha Antibody, REG-3-alpha Antibody, Human proislet peptide Antibody, PBCGF Antibody
<b>Host</b>	REG3A antibody was produced in Rabbit
<b>Clonality:</b>	Polyclonal
<b>Immunogen Species:</b>	REG3A antibody was raised against Human
<b>Antigen Type:</b>	Synthetic peptide
<b>Immunogen:</b>	REG3A antibody was raised against a portion of amino acids 1-50 of human REG3A was used as the immunogen for this antibody.
<b>Specificity:</b>	Human REG3A
<b>Epitope:</b>	aa1-50
<b>Reactivity:</b>	Human, Chimpanzee
<b>Purification:</b>	Protein G purified
<b>Presentation:</b>	PBS, 0.05% BSA, 0.05% sodium azide
<b>Recommended Storage:</b>	Store at 4°C, stable for 6 months. For long term storage, aliquot and store at -20°C.
<b>Uses:</b>	IHC - Paraffin (10 µg/ml), Western blot (1 - 3 µg/ml) (Optimal dilution to be determined by the researcher)
<b>Size:</b>	50 µg
<b>Concentration:</b>	0.5 mg/ml

**Immunohistochemistry Image:**



Anti-REG3A antibody IHC of human small intestine. Immunohistochemistry of formalin-fixed, paraffin-embedded tissue after heat-induced antigen retrieval. Antibody LS-B7238 concentration 10 ug/ml.

**Requested From:**

Japan

Laboratory Reagent For In Vitro Research Use Only

Not for resale without prior written consent from LifeSpan BioSciences, Inc.

Created on 9/24/2014

© 2014 LifeSpan BioSciences