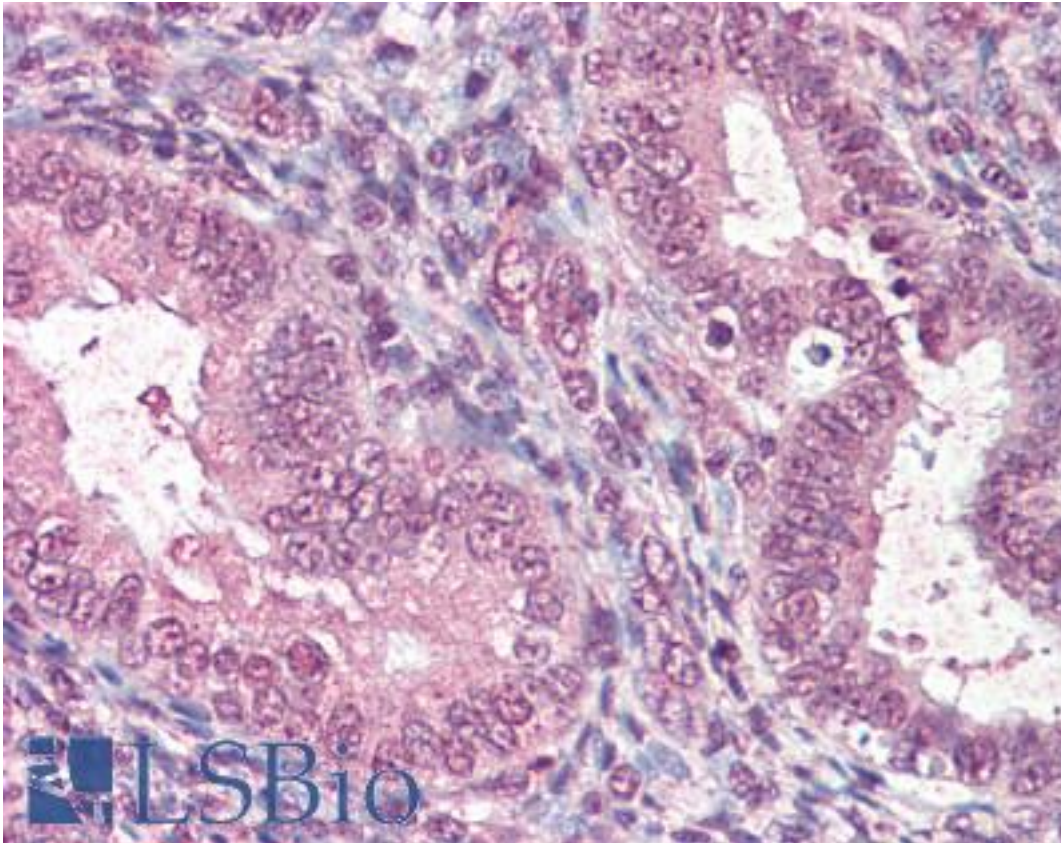


CTDSP1 / SCP1 Goat anti-Human Polyclonal (Internal) Antibody - LS-B7228 - LSBio	
CatalogID:	LS-B7228
Validation:	This antibody replaces catalog number LS-C54686. It has been validated for use in the following assays: IHC-P.
Target:	CTD (carboxy-terminal domain, RNA polymerase II, polypeptide A) small phosphatase 1 (CTDSP1)
Synonyms:	CTDSP1 Antibody, NIF3 Antibody, NLIIF Antibody, NLI-IF Antibody, SCP1 Antibody, NLI-interacting factor 3 Antibody, Small CTD phosphatase 1 Antibody
Host	CTDSP1 antibody was produced in Goat
Clonality:	Polyclonal
Immunogen Species:	CTDSP1 / SCP1 antibody was raised against Human
Antigen Type:	Synthetic peptide
Immunogen:	CTDSP1 / SCP1 antibody was raised against synthetic peptide C-RGKGDQKSAASQK from an internal region of human CTDSP1 (NP_067021.1; NP_872580.1). Percent identity by BLAST analysis: Human, Gorilla, Monkey (100%); Marmoset, Mouse, Rat, Bovine, Dog, Rabbit (92%).
Specificity:	Human CTDSP1. This antibody is expected to recognise both reported isoforms (NP_067021.1 and NP_872580.1).
Epitope:	Internal
Reactivity:	Human, Gorilla
Predicted Reactivity:	Monkey, Mouse, Rat, Bovine, Dog, Rabbit
Purification:	Immunoaffinity purified
Presentation:	Tris-buffered saline, pH 7.3, 0.5% BSA, 0.02% sodium azide
Recommended Storage:	Short term 4°C, long term aliquot and store at -20°C, avoid freeze thaw cycles.
Usage Summary:	ELISA testing refers to peptide-based assay.
Uses:	IHC - Paraffin (5 µg/ml), ELISA (1:32000) (Optimal dilution to be determined by the researcher)
Size:	50 µg
Concentration:	0.5 mg/ml

Immunohistochemistry Image:



Anti-CTDSP1 antibody IHC of human uterus. Immunohistochemistry of formalin-fixed, paraffin-embedded tissue after heat-induced antigen retrieval. Antibody LS-B7228 concentration 5 ug/ml.

Requested From:

Japan

Laboratory Reagent For In Vitro Research Use Only

Not for resale without prior written consent from LifeSpan BioSciences, Inc.

Created on 9/24/2014

© 2014 LifeSpan BioSciences