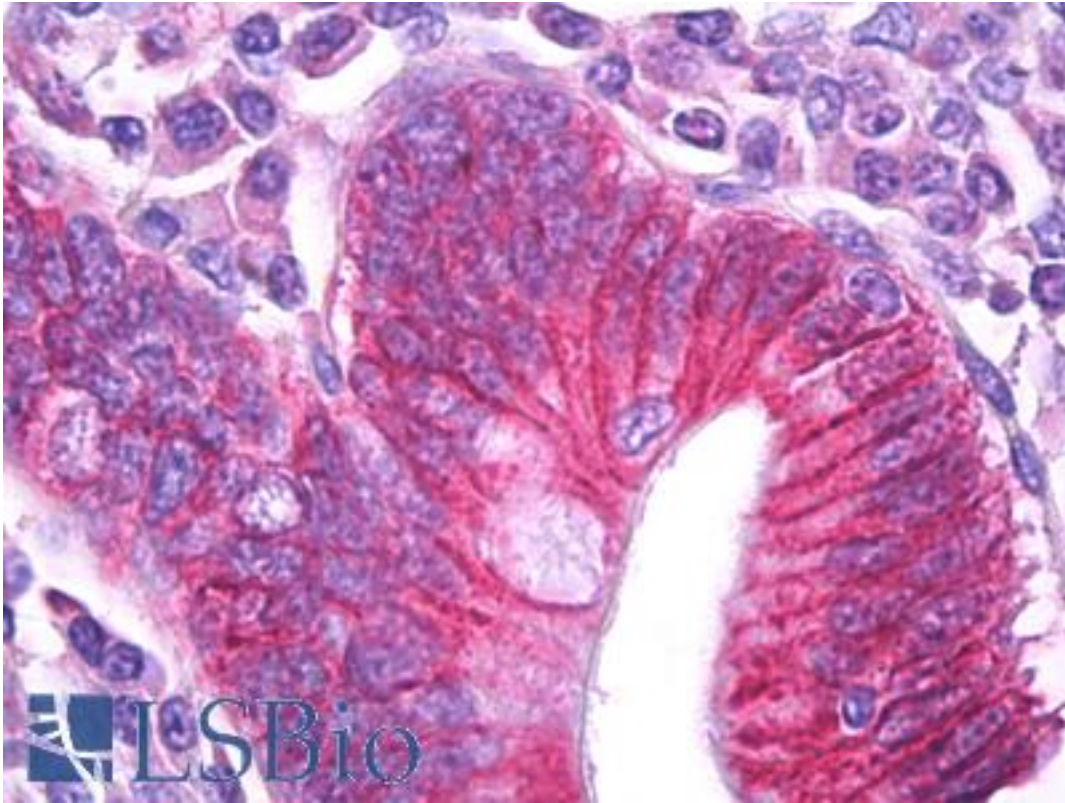


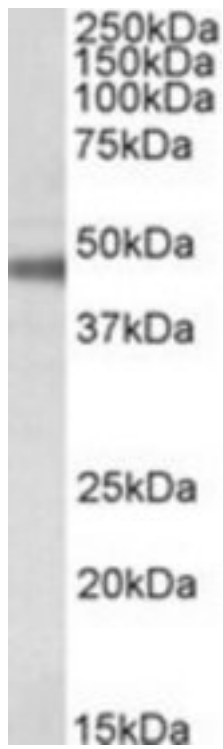
ATP1B1 Goat anti-Human Polyclonal (Internal) Antibody - LS-B7227 - LSBio	
CatalogID:	LS-B7227
Validation:	This antibody replaces catalog number LS-C112982. It has been validated for use in the following assays: IHC-P.
Target:	ATPase, Na ⁺ /K ⁺ transporting, beta 1 polypeptide (ATP1B1)
Synonyms:	ATP1B1 Antibody, Adenosinetriphosphatase Antibody, ATP1B Antibody, Atpb1 Antibody
Family / Subfamily:	Transporter / ATPase - P type, beta subunit
Host	ATP1B1 antibody was produced in Goat
Clonality:	Polyclonal
Immunogen Species:	ATP1B1 antibody was raised against Human
Antigen Type:	Synthetic peptide
Immunogen:	ATP1B1 antibody was raised against synthetic peptide C-KTEISFRPNPKSYE from an internal region of human ATP1B1 (NP_001668.1; NP_001001787.1). Percent identity by BLAST analysis: Human, Chimpanzee, Gorilla, Orangutan, Gibbon, Monkey, Mouse, Rat, Hamster, Dog, Horse (100%); Marmoset, Elephant, Panda, Pig, Guinea pig (93%); Sheep, Bovine, Rabbit (87%); Chicken (80%).
Specificity:	Human ATP1B1. This antibody is expected to recognize both reported isoforms (NP_001668.1; NP_001001787.1).
Epitope:	Internal
Reactivity:	Human, Chimpanzee, Gorilla, Orangutan, Gibbon, Mouse, Rat, Dog, Hamster, Horse
Predicted Reactivity:	Monkey, Guinea pig, Pig
Purification:	Immunoaffinity purified
Presentation:	Tris-buffered saline, pH 7.3, 0.5% BSA, 0.02% sodium azide
Recommended Storage:	Short term 4°C, long term aliquot and store at -20°C, avoid freeze thaw cycles.
Usage Summary:	Peptide ELISA: antibody detection limit dilution 1:128000. Western blot: Approx 48kDa band observed in Rat Retina lysates and 50kDa in Mouse and Rat Kidney lysates (calculated MW of 35.1kDa according to Human NP_001668.1, 35.2kDa according to Mouse NP_033851.1 and Rat NP_037245.2). The observed molecular weight corresponds to earlier findings with different antibodies from other commercial sources. Recommended concentration: 0.1-0.3 µg/ml.
Uses:	IHC - Paraffin (5 µg/ml), Western blot (0.1 - 0.3 µg/ml), ELISA (1:128000) (Optimal dilution to be determined by the researcher)
Size:	50 µg
Concentration:	0.5 mg/ml

Immunohistochemistry Image:



Anti-ATP1B1 antibody IHC of human small intestine. Immunohistochemistry of formalin-fixed, paraffin-embedded tissue after heat-induced antigen retrieval. Antibody LS-B7227 concentration 5 ug/ml.

Western Blot Image:



ATP1B1 antibody (0.1 ug/ml) staining of Rat Retina lysate (35 ug protein/ml in RIPA buffer).
Primary incubation was 1 hour. Detected by chemiluminescence.

Requested From:

Japan

Laboratory Reagent For In Vitro Research Use Only

Not for resale without prior written consent from LifeSpan BioSciences, Inc.

Created on 9/24/2014

© 2014 LifeSpan BioSciences