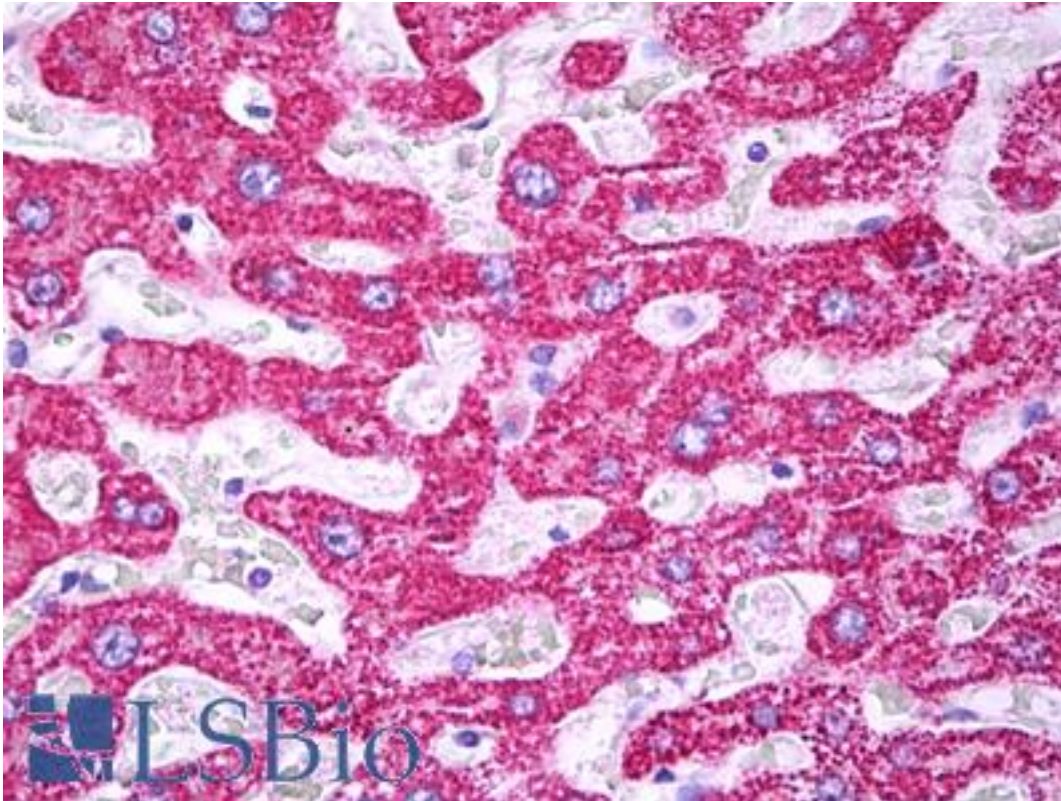


TOMM22 / TOM22 Mouse anti-Human Monoclonal (4G4) Antibody - LS-B7223 - LSBio

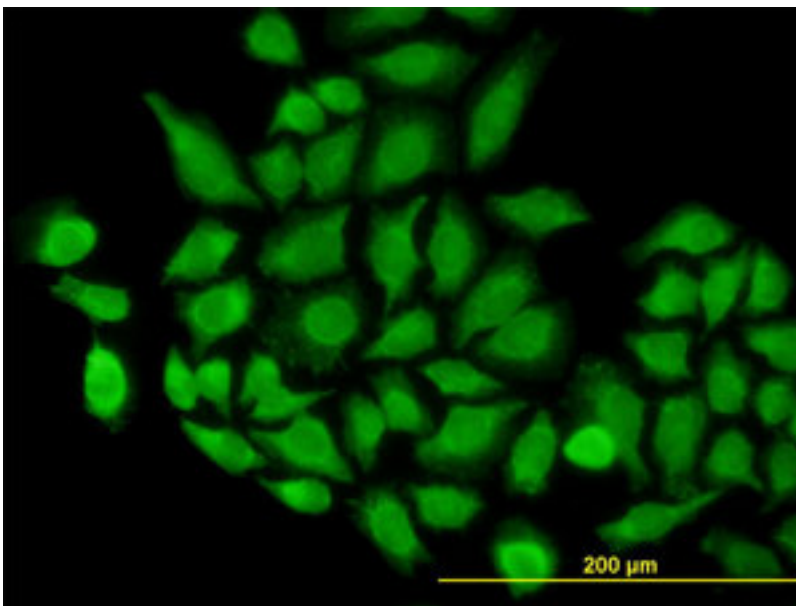
CatalogID:	LS-B7223
Validation:	This antibody replaces catalog number LS-C133792. It has been validated for use in the following assays: IHC-P.
Target:	translocase of outer mitochondrial membrane 22 homolog (yeast) (TOMM22)
Synonyms:	TOMM22 Antibody, 1C9-2 Antibody, MSTP065 Antibody, MST065 Antibody, HTom22 Antibody, TOM22 Antibody
Host	TOMM22 antibody was produced in Mouse
Clonality:	Monoclonal
Isotype:	IgG2a,k
Clone Name:	4G4
Immunogen Species:	TOMM22 / TOM22 antibody was raised against Human
Immunogen:	TOMM22 / TOM22 antibody was raised against tOMM22 (AAH09363, 1 a.a. ~ 143 a.a) full length recombinant protein with GST tag. MW of the GST tag alone is 26 KDa.
Specificity:	Human TOMM22
Reactivity:	Human, Mouse, Rat
Purification:	Protein A purified
Presentation:	PBS, pH 7.4. Sourced in Ascites.
Recommended Storage:	Short term 4°C, long term aliquot and store at -20°C, avoid freeze thaw cycles.
Usage Summary:	Immunohistochemistry: Formalin-fixed paraffin-embedded sections. RNAi Knockdown: Antibody validated. Sandwich ELISA: Recombinant protein. Western Blot using transfected cell lysates, cell line lysates and the recombinant protein used as the immunogen.
Uses:	IHC - Paraffin (10 µg/ml), Immunofluorescence (10 µg/ml), Western blot, ELISA (Optimal dilution to be determined by the researcher)
Size:	50 µg
Concentration:	0.5 mg/ml

Immunohistochemistry Image:



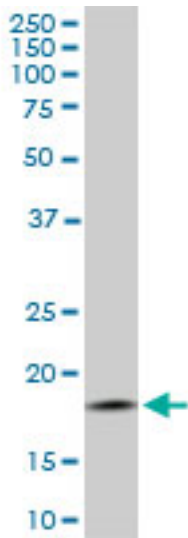
Anti-TOMM22 antibody IHC of human liver, hepatocytes. Immunohistochemistry of formalin-fixed, paraffin-embedded tissue after heat-induced antigen retrieval. Antibody LS-B7223 concentration 10 ug/ml.

Immunofluorescence Image:



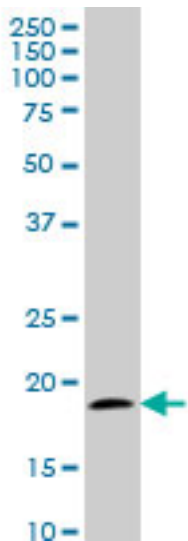
Immunofluorescence of monoclonal antibody to TOMM22 on HeLa cell. [antibody concentration 10 ug/ml]

Western Blot Image:



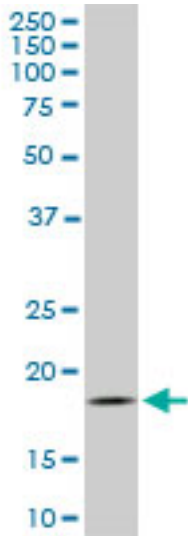
LS-B7223 Western blot of TOMM22 expression in Raw 264.7.

Western Blot Image:



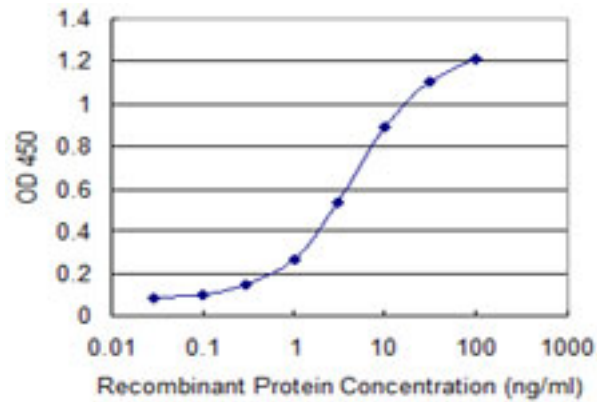
LS-B7223 Western blot of TOMM22 expression in NIH/3T3.

Western Blot Image:



LS-B7222 Western blot of TOMM22 expression in PC-12.

ELISA Image:



Detection limit for recombinant GST tagged TOMM22 is 0.1 ng/ml as a capture antibody.

Requested From:

Japan

Laboratory Reagent For In Vitro Research Use Only

Not for resale without prior written consent from LifeSpan BioSciences, Inc.

Created on 9/24/2014

© 2014 LifeSpan BioSciences