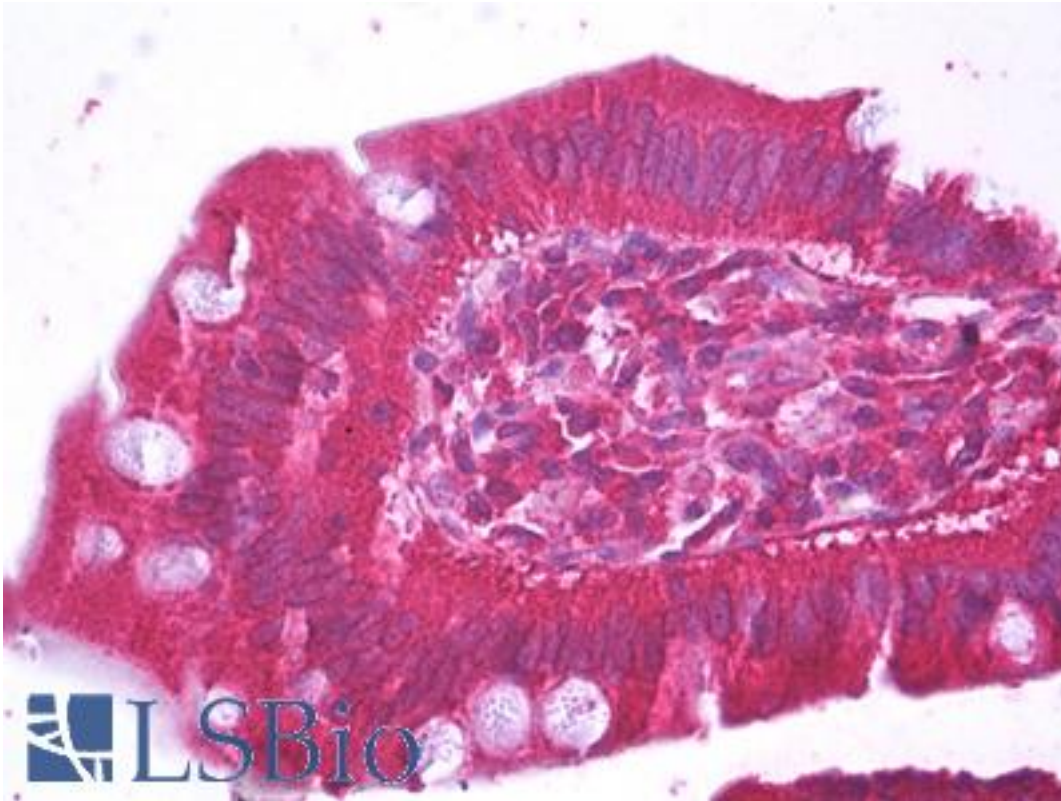


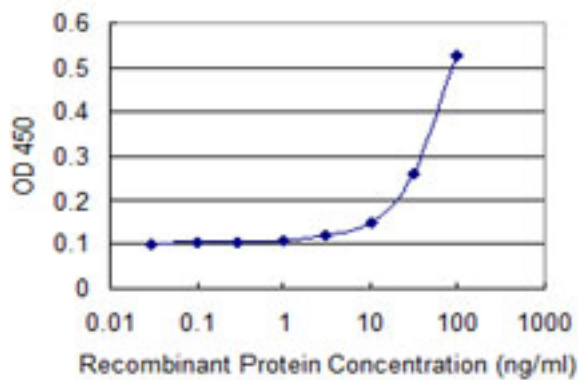
HFE2 / Hemojuvelin Mouse anti-Human Monoclonal (1C12) Antibody - LS-B7222 - LSBio	
<b>CatalogID:</b>	LS-B7222
<b>Validation:</b>	This antibody replaces catalog number LS-C134124. It has been validated for use in the following assays: IHC-P.
<b>Target:</b>	hemochromatosis type 2 (juvenile) (HFE2)
<b>Synonyms:</b>	HFE2 Antibody, Haemojuvelin Antibody, HFE2A Antibody, HJV Antibody, Hemochromatosis type 2 protein Antibody, Repulsive guidance molecule c Antibody, RGM domain family member C Antibody, Hemojuvelin Antibody, JH Antibody, RGMC Antibody
<b>Host</b>	HFE2 antibody was produced in Mouse
<b>Clonality:</b>	Monoclonal
<b>Isotype:</b>	IgG2a,k
<b>Clone Name:</b>	1C12
<b>Immunogen Species:</b>	HFE2 / Hemojuvelin antibody was raised against Human
<b>Immunogen:</b>	HFE2 / Hemojuvelin antibody was raised against hFE2 (NP_973733, 93 a.a. ~ 174 a.a) partial recombinant protein with GST tag. MW of the GST tag alone is 26 KDa.
<b>Specificity:</b>	Human HFE2
<b>Reactivity:</b>	Human
<b>Purification:</b>	Protein A purified
<b>Presentation:</b>	PBS, pH 7.4. Sourced in Ascites.
<b>Recommended Storage:</b>	Short term 4°C, long term aliquot and store at -20°C, avoid freeze thaw cycles.
<b>Usage Summary:</b>	Immunohistochemistry: Formalin-fixed paraffin-embedded sections. Sandwich ELISA: Recombinant protein. Western Blot: Recombinant protein.
<b>Uses:</b>	IHC - Paraffin (5 µg/ml), Western blot, ELISA (Optimal dilution to be determined by the researcher)
<b>Size:</b>	50 µg
<b>Concentration:</b>	0.5 mg/ml

**Immunohistochemistry Image:**



Anti-HFE2 antibody IHC of human small intestine. Immunohistochemistry of formalin-fixed, paraffin-embedded tissue after heat-induced antigen retrieval. Antibody LS-B7222 concentration 5 ug/ml.

**ELISA Image:**



Detection limit for recombinant GST tagged HFE2 is 3 ng/ml as a capture antibody.

**Requested From:**

Japan

Laboratory Reagent For In Vitro Research Use Only

Not for resale without prior written consent from LifeSpan BioSciences, Inc.

Created on 9/24/2014

© 2014 LifeSpan BioSciences