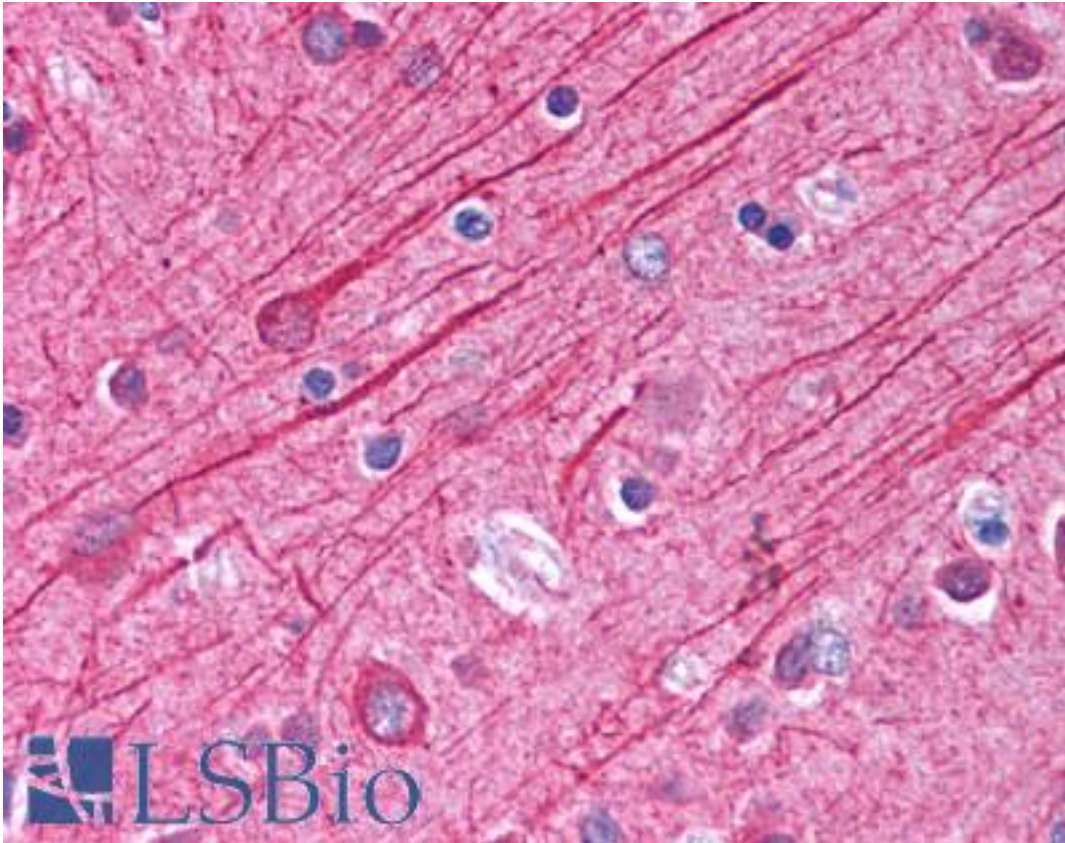


**Alpha Tubulin Rabbit anti-Human Polyclonal (aa427-441) Antibody - LS-B722 - LSBio**

<b>CatalogID:</b>	LS-B722
<b>Validation:</b>	This antibody replaces catalog number LS-C18909. It has been validated for use in the following assays: IHC.
<b>Target:</b>	Tubulin Alpha
<b>Host</b>	Tubulin Alpha antibody was produced in Rabbit
<b>Clonality:</b>	Polyclonal
<b>Immunogen Species:</b>	Alpha Tubulin antibody was raised against Human
<b>Antigen Type:</b>	Synthetic peptide
<b>Immunogen:</b>	Alpha Tubulin antibody was raised against synthetic peptide from human Tubulin, Alpha 1 (TUBA1).
<b>Specificity:</b>	Amino acids 427-441 of Human alpha Tubulin.
<b>Epitope:</b>	aa427-441
<b>Reactivity:</b>	Human, Mouse, Rat, Bovine, Chicken
<b>Purification:</b>	Immunoaffinity purified
<b>Presentation:</b>	0.02 M potassium phosphate, 0.15 M sodium chloride, pH 7.2, 0.01% sodium azide.
<b>Recommended Storage:</b>	+4°C or -20°C, Avoid repeated freezing and thawing.
<b>Usage Summary:</b>	Immunohistochemistry: LS-B722 was validated for use in immunohistochemistry on a panel of 21 formalin-fixed, paraffin-embedded (FFPE) human tissues after heat induced antigen retrieval in pH 6.0 citrate buffer. After incubation with the primary antibody, slides were incubated with biotinylated secondary antibody, followed by alkaline phosphatase-streptavidin and chromogen. The stained slides were evaluated by a pathologist to confirm staining specificity. The optimal working concentration for LS-B722 was determined to be 2.5 ug/ml.
<b>Uses:</b>	IHC - Paraffin (2.5 ug/ml), Immunofluorescence, Western blot (1:500 - 1:3000), ELISA (1:5000 - 1:25000) (Optimal dilution to be determined by the researcher)
<b>Size:</b>	50 ug
<b>Concentration:</b>	0.85 mg/ml

**Immunohistochemistry Image:**



Anti-TUBA1 / Tubulin Alpha 1 antibody IHC of human brain, cortex. Immunohistochemistry of formalin-fixed, paraffin-embedded tissue after heat-induced antigen retrieval. Antibody LS-B722 concentration 5 ug/ml.

**Western Blot Image:**



Anti-Alpha Tubulin - Western Blot. Western blot of Affinity Purified anti-alpha Tubulin antibody shows detection of a predominant band at ~50 kD corresponding to alpha tubulin (arrowhead). Lanes correspond to whole cell lysates from mouse brain (lane 1), rat brain (lane 2), A431 cells (lane 3), Jurkat cells (lane 4) and HeLa cells (lane 5). Approximately 35 ug of each lysate was separated on a 4-20% Tris-HEPES gel by SDS-PAGE and transferred onto nitrocellulose. After blocking the membrane was probed with the primary antibody diluted to 1:1200. Reaction occurred 2h at room temperature followed by washes and reaction with a 1:10000 dilution of IRDye 800 conjugated Gt-a-Rb IgG [H&L] MX10 ( for 45 min at room temperature. IRDye 800 fluorescence image was captured using the Odyssey Infrared Imaging System developed by LI-COR. IRDye is a trademark of LI-COR, Inc. Other detection systems will yield similar results.

**Requested From:**

Japan

Laboratory Reagent For In Vitro Research Use Only

Not for resale without prior written consent from LifeSpan BioSciences, Inc.

Created on 9/24/2014

© 2014 LifeSpan BioSciences