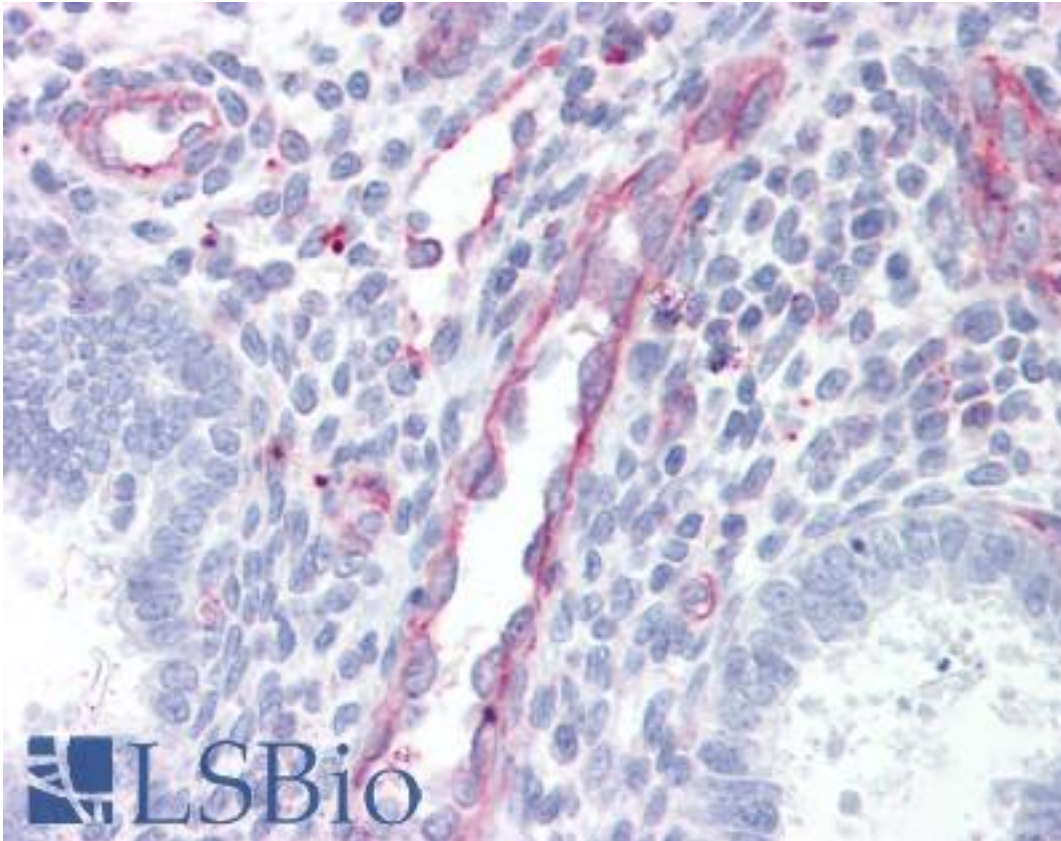


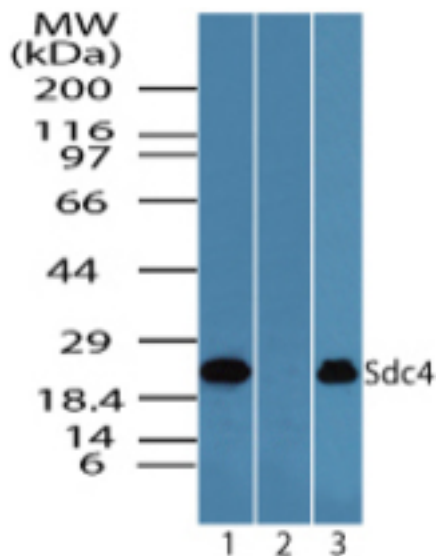
SDC4 / Syndecan 4 Rabbit anti-Human Polyclonal (aa1-50) Antibody - LS-B7214 - LSBio	
<b>CatalogID:</b>	LS-B7214
<b>Validation:</b>	This antibody replaces catalog number LS-C148455. It has been validated for use in the following assays: IHC-P.
<b>Target:</b>	syndecan 4 (SDC4)
<b>Synonyms:</b>	SDC4 Antibody, Amphiglycan Antibody, Ryudocan amphiglycan Antibody, Ryudocan Antibody, Syndecan proteoglycan 4 Antibody, Syndecan-4 Antibody, Ryudocan core protein Antibody, SYND4 Antibody, Syndecan 4 Antibody
<b>Host</b>	SDC4 antibody was produced in Rabbit
<b>Clonality:</b>	Polyclonal
<b>Isotype:</b>	IgG
<b>Immunogen Species:</b>	SDC4 / Syndecan 4 antibody was raised against Human
<b>Antigen Type:</b>	Synthetic peptide
<b>Immunogen:</b>	SDC4 / Syndecan 4 antibody was raised against a portion of amino acids 1-50 of human Syndecan-4 was used as the immunogen.
<b>Specificity:</b>	Human SDC4 / Syndecan 4
<b>Epitope:</b>	aa1-50
<b>Reactivity:</b>	Human, Monkey, Mouse
<b>Purification:</b>	Protein A purified
<b>Presentation:</b>	PBS, 0.05% BSA, 0.05% sodium azide
<b>Recommended Storage:</b>	Store at 4°C for short term applications. For long term storage, aliquot and store at -20°C.
<b>Uses:</b>	IHC - Paraffin (10 µg/ml), Western blot (1 - 2 µg/ml) (Optimal dilution to be determined by the researcher)
<b>Size:</b>	50 µg
<b>Concentration:</b>	0.5 mg/ml

**Immunohistochemistry Image:**



Anti-SDC4 / Syndecan 4 antibody IHC of human uterus. Immunohistochemistry of formalin-fixed, paraffin-embedded tissue after heat-induced antigen retrieval. Antibody LS-B7214 concentration 10 ug/ml.

**Western Blot Image:**



Western blot of Syndecan-4 in Jurkat cell lysate in the 1) absence and 2) presence of immunizing peptide and 3) Raw cell lysate using LS-B7214 at 1.0 ug/ml.

Requested From:

Japan

Laboratory Reagent For In Vitro Research Use Only

Not for resale without prior written consent from LifeSpan BioSciences, Inc.

Created on 9/24/2014

© 2014 LifeSpan BioSciences