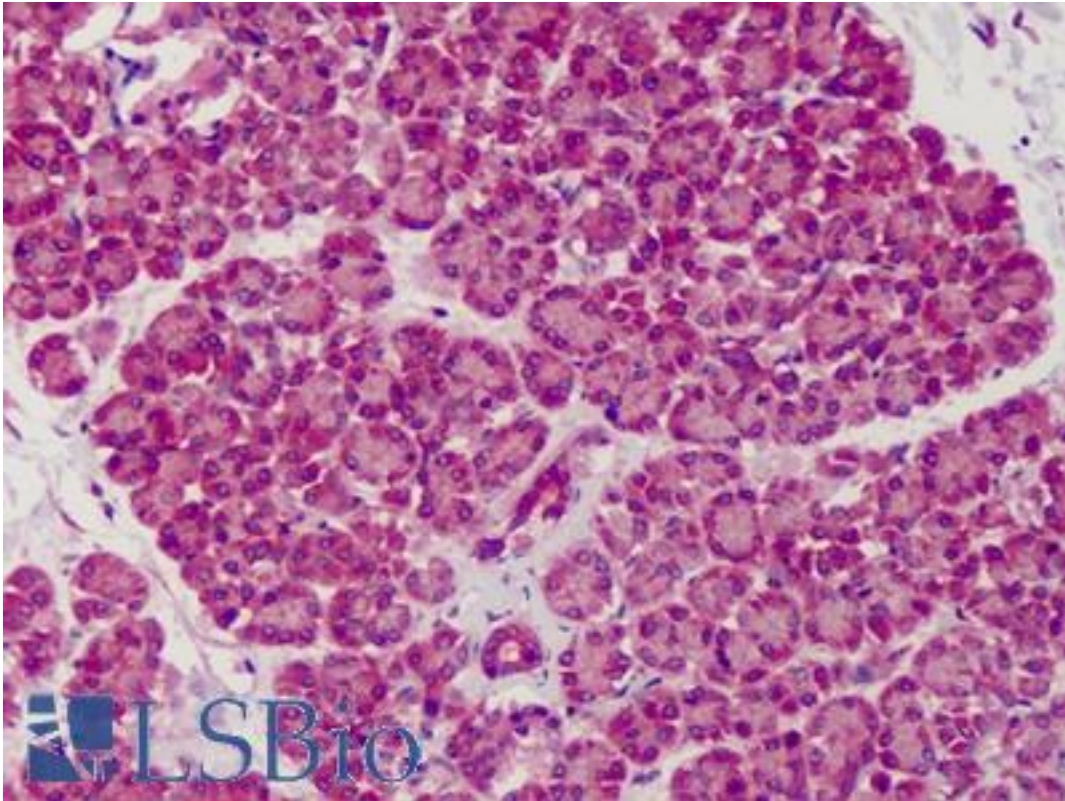


SLIT1 / SLIT-1 Rabbit anti-Mouse Polyclonal (aa487-504) Antibody - LS-B721 - LSBio

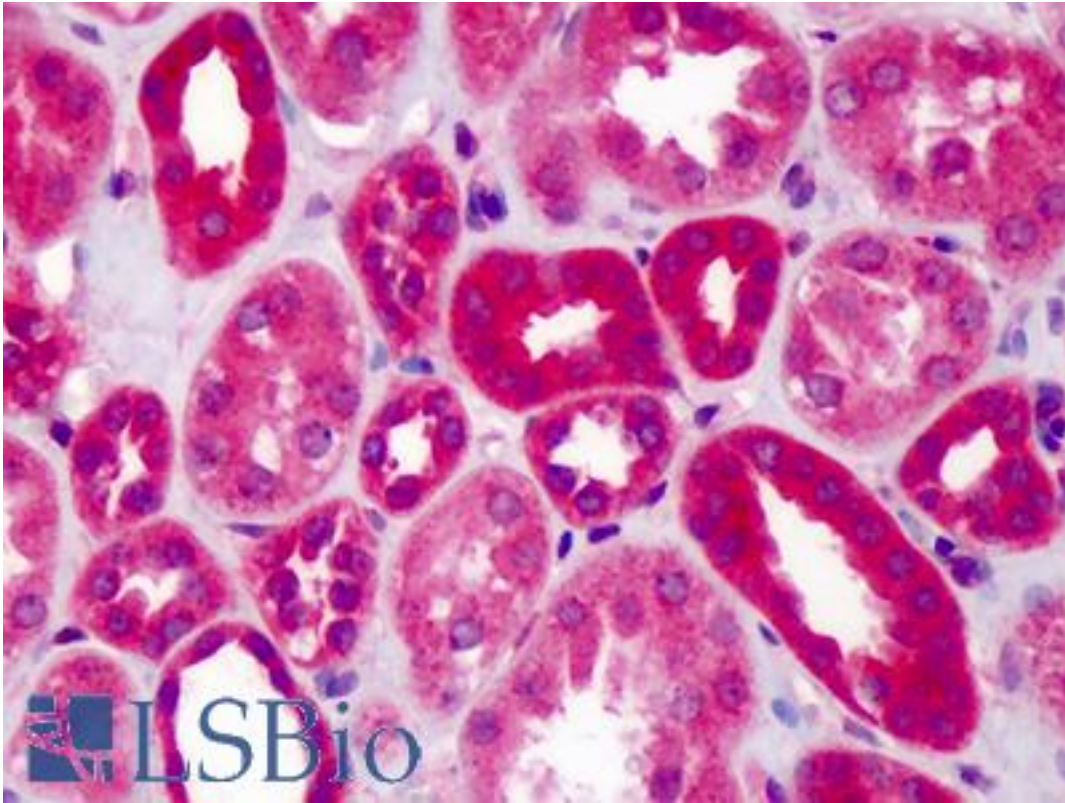
CatalogID:	LS-B721
Validation:	This antibody replaces catalog number LS-C18984. It has been validated for use in the following assays: IHC.
Target:	slit homolog 1 (Drosophila) (SLIT1)
Synonyms:	SLIT1 Antibody, KIAA0813 Antibody, MEGF4 Antibody, Slit (Drosophila) homolog 1 Antibody, Slit homolog 1 protein Antibody, SLIT-1 Antibody, SLIL1 Antibody, Slit homolog 1 (Drosophila) Antibody
Host	SLIT1 antibody was produced in Rabbit
Clonality:	Polyclonal
Immunogen Species:	SLIT1 / SLIT-1 antibody was raised against Mouse
Antigen Type:	Synthetic peptide
Immunogen:	SLIT1 / SLIT-1 antibody was raised against synthetic peptide from mouse SLIT1.
Specificity:	aa 487-504 of mouse SLIT-1 protein.
Epitope:	aa487-504
Reactivity:	Mouse, Human, Rat
Purification:	Immunoaffinity purified
Presentation:	0.02 M potassium phosphate, 0.15 M sodium chloride, pH 7.2, 0.01% sodium azide.
Recommended Storage:	+4°C or -20°C, Avoid repeated freezing and thawing.
Usage Summary:	Immunohistochemistry: LS-B721 was validated for use in immunohistochemistry on a panel of 21 formalin-fixed, paraffin-embedded (FFPE) human tissues after heat induced antigen retrieval in pH 6.0 citrate buffer. After incubation with the primary antibody, slides were incubated with biotinylated secondary antibody, followed by alkaline phosphatase-streptavidin and chromogen. The stained slides were evaluated by a pathologist to confirm staining specificity. The optimal working concentration for LS-B721 was determined to be 5 ug/ml.
Uses:	IHC - Paraffin (5 µg/ml), Western blot (1:500 - 1:2000), ELISA (1:10000 - 1:50000) (Optimal dilution to be determined by the researcher)
Size:	50 µg
Concentration:	1 mg/ml

Immunohistochemistry Image:



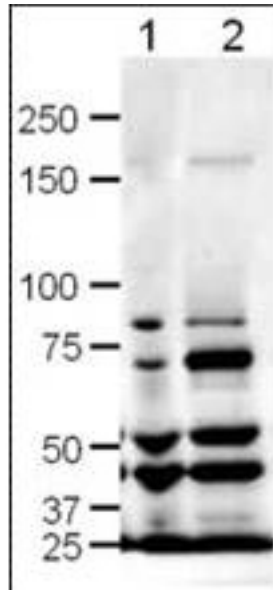
Anti-SLIT1 antibody IHC of human pancreas. Immunohistochemistry of formalin-fixed, paraffin-embedded tissue after heat-induced antigen retrieval. Antibody LS-B721 concentration 5 ug/ml.

Immunohistochemistry Image:



Anti-SLIT1 antibody IHC of human kidney. Immunohistochemistry of formalin-fixed, paraffin-embedded tissue after heat-induced antigen retrieval. Antibody LS-B721 concentration 5 ug/ml.

Western Blot Image:



Anti-SLIT-1 Antibody - Western Blot. Western blot of Affinity Purified anti-SLIT-1 antibody shows detection of SLIT-1 in rat (lane 1) and mouse (lane 2) brain lysates. The expected molecular weight for SLIT-1 is 168 kD. Approximately 20 ug of each lysates was run on a SDS-PAGE and transferred onto nitrocellulose followed by reaction with a 1:500 dilution of anti-SLIT-1 antibody. Signal was detected using standard techniques. Note: The smaller strong bands observed in this blot are likely SLIT-1 cleavage products. A number of cleavage products for both Slit1 and Slit2 are reported in the literature resulting from alternate splicing and range from ~40kD -160kD (see Little et al, 2002 for additional details).

Requested From:

Japan

Laboratory Reagent For In Vitro Research Use Only

Not for resale without prior written consent from LifeSpan BioSciences, Inc.

Created on 9/24/2014

© 2014 LifeSpan BioSciences