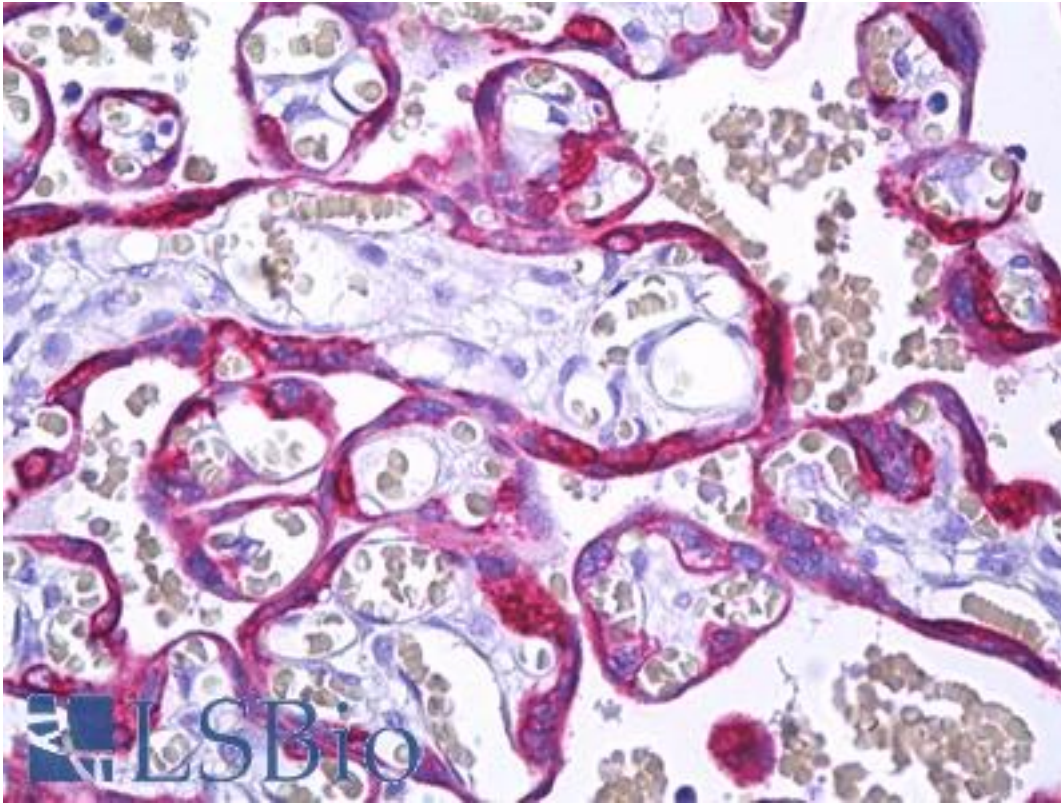


**MFGE8 / MFG-E8 Mouse anti-Human Monoclonal (B656M) Antibody - LS-B7201 - LSBio**

<b>CatalogID:</b>	LS-B7201
<b>Validation:</b>	This antibody replaces catalog number LS-C122136. It has been validated for use in the following assays: IHC-P.
<b>Target:</b>	milk fat globule-EGF factor 8 protein (MFGE8)
<b>Synonyms:</b>	MFGE8 Antibody, Breast epithelial antigen BA46 Antibody, EDIL1 Antibody, HP47 Antibody, Lactadherin Antibody, Medin Antibody, MFGM Antibody, Milk fat globule-EGF factor 8 Antibody, HsT19888 Antibody, OAcGD3S Antibody, SPAG10 Antibody, Sperm associated antigen 10 Antibody, MFG-E8 Antibody, SED1 Antibody, Sperm surface protein hP47 Antibody, BA46 Antibody, HMFG Antibody
<b>Host</b>	MFGE8 antibody was produced in Mouse
<b>Clonality:</b>	Monoclonal
<b>Isotype:</b>	IgG1
<b>Clone Name:</b>	B656M
<b>Immunogen Species:</b>	MFGE8 / MFG-E8 antibody was raised against Human
<b>Immunogen:</b>	MFGE8 / MFG-E8 antibody was raised against hMFG Membrane tissue/cell preparation.
<b>Specificity:</b>	Recognizes HMFG at ~40-45kD.
<b>Reactivity:</b>	Human
<b>Purification:</b>	Protein A purified
<b>Presentation:</b>	PBS, 10 mM sodium azide. Sourced in TCS.
<b>Recommended Storage:</b>	Long term: -20°C; Short term: +4°C. Avoid repeat freeze-thaw cycles.
<b>Usage Summary:</b>	Suitable for use in Western blot, Immunocytochemistry (methanol/acetone fixed cultured human epithelial cells) and Immunohistochemistry (frozen sections and formalin fixed paraffin embedded tissues).
<b>Uses:</b>	IHC - Paraffin (10 µg/ml), IHC - Frozen, ICC, Western blot (Optimal dilution to be determined by the researcher)
<b>Size:</b>	50 µg
<b>Concentration:</b>	2 mg/ml

**Immunohistochemistry Image:**



Anti-MFGE8 / MFG-E8 antibody IHC of human placenta, trophoblast. Immunohistochemistry of formalin-fixed, paraffin-embedded tissue after heat-induced antigen retrieval. Antibody LS-B7201 concentration 10 ug/ml.

**Requested From:**

Japan

Laboratory Reagent For In Vitro Research Use Only

Not for resale without prior written consent from LifeSpan BioSciences, Inc.

Created on 9/24/2014

© 2014 LifeSpan BioSciences