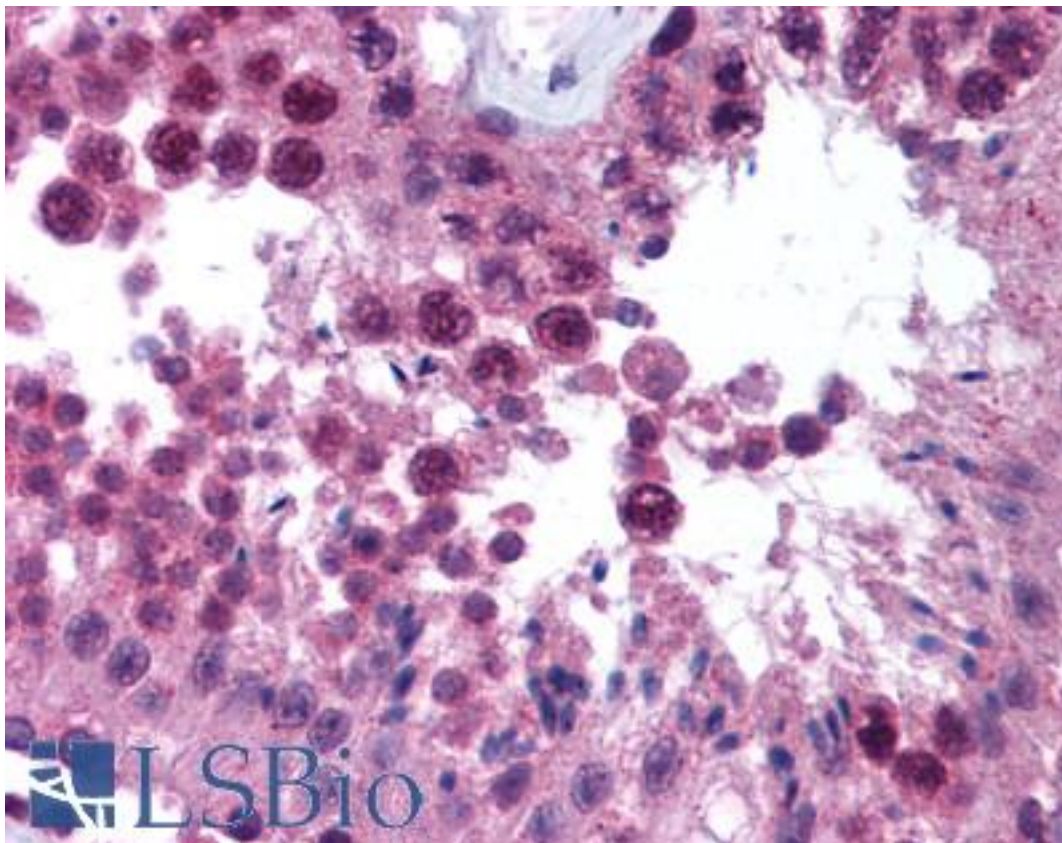


ESET / SETDB1 Rabbit anti-Human Polyclonal (aa1058-1075) Antibody - LS-B720 - LSBio	
CatalogID:	LS-B720
Validation:	This antibody replaces catalog number LS-C18831. It has been validated for use in the following assays: IHC.
Target:	SET domain, bifurcated 1 (SETDB1)
Synonyms:	SETDB1 Antibody, H3-K9-HMTase4 Antibody, ESET Antibody, KMT1E Antibody, H3-K9-HMTase 4 Antibody, KG1T Antibody, SET domain, bifurcated 1 Antibody, SET domain bifurcated 1 Antibody, KIAA0067 Antibody, Lysine N-methyltransferase 1E Antibody
Host	SETDB1 antibody was produced in Rabbit
Clonality:	Polyclonal
Immunogen Species:	ESET / SETDB1 antibody was raised against Human
Antigen Type:	Synthetic peptide
Immunogen:	ESET / SETDB1 antibody was raised against synthetic peptide from human SETDB1.
Specificity:	Amino acids 1058-1075 of human ESET.
Epitope:	aa1058-1075
Reactivity:	Human
Purification:	Immunoaffinity purified
Presentation:	0.02 M potassium phosphate, 0.15 M sodium chloride, pH 7.2, 0.01% sodium azide.
Recommended Storage:	+4°C or -20°C, Avoid repeated freezing and thawing.
Usage Summary:	Immunohistochemistry: LS-B720 was validated for use in immunohistochemistry on a panel of 21 formalin-fixed, paraffin-embedded (FFPE) human tissues after heat induced antigen retrieval in pH 6.0 citrate buffer. After incubation with the primary antibody, slides were incubated with biotinylated secondary antibody, followed by alkaline phosphatase-streptavidin and chromogen. The stained slides were evaluated by a pathologist to confirm staining specificity. The optimal working concentration for LS-B720 was determined to be 5 ug/ml.
Uses:	IHC - Paraffin (5 µg/ml), Western blot (1:1000 - 1:2500), ELISA (1:10000 - 1:50000) (Optimal dilution to be determined by the researcher)
Size:	50 µg
Concentration:	1.2 mg/ml

Immunohistochemistry Image:



Anti-SETDB1 antibody IHC of human testis. Immunohistochemistry of formalin-fixed, paraffin-embedded tissue after heat-induced antigen retrieval. Antibody LS-B720 concentration 5 ug/ml.

Western Blot Image:



Anti-ESET Antibody - Western Blot. Western blot analysis is shown using Affinity Purified anti-ESET antibody to detect human ESET present in a 293 whole cell lysate. ~30 ug of lysate was loaded per lane for SDS-PAGE. Comparison to a molecular weight marker (not shown) indicates a single band of ~170 kD is detected. Peptide competition (not shown) blocks staining of this band. The blot was incubated with a 1:1000 dilution of the antibody at room temperature for 2 h followed by detection using IRDye800 labeled Goat-a-Rabbit IgG [H&L] (diluted 1:5000 for 45 min. IRDye800 fluorescence image was captured using the Odyssey Infrared Imaging System developed by LI-COR. IRDye is a trademark of LI-COR, Inc. Other detection systems will yield similar results.

Requested From:	Japan
Laboratory Reagent For In Vitro Research Use Only	
Not for resale without prior written consent from LifeSpan BioSciences, Inc.	
Created on 9/24/2014	
© 2014 LifeSpan BioSciences	