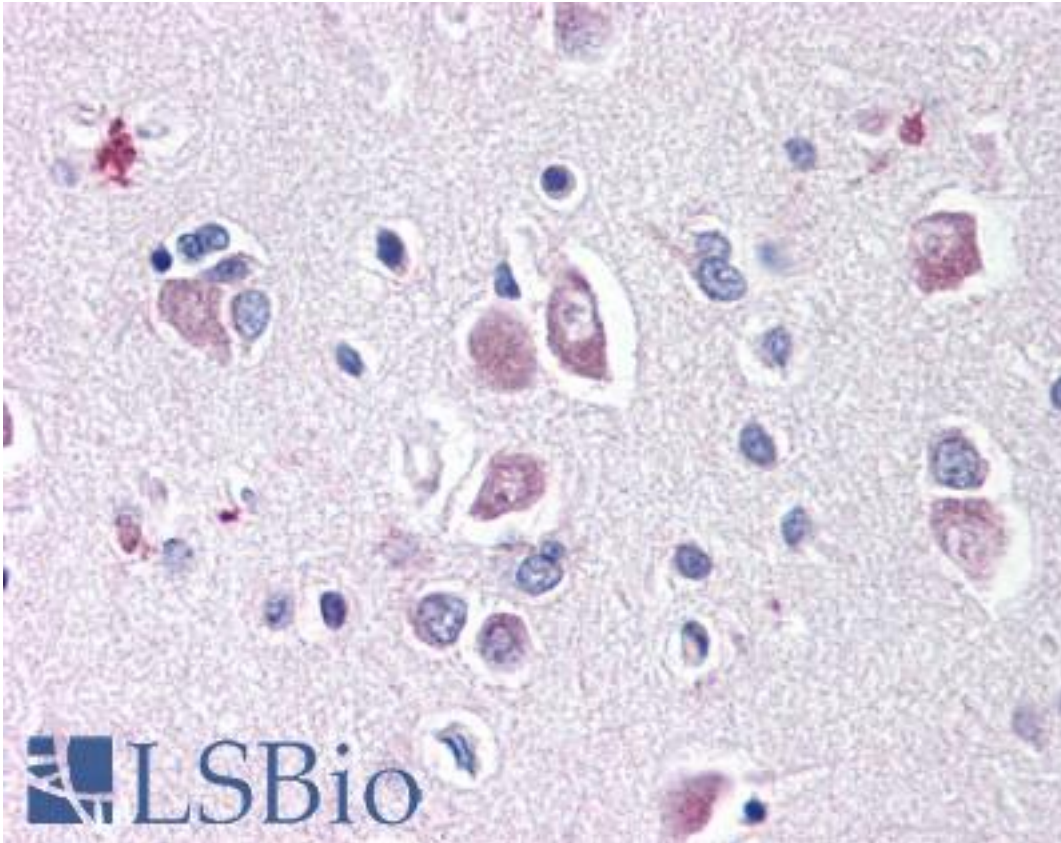


DLL1 Rabbit anti-Mouse Polyclonal (aa155-173) Antibody - LS-B72 - LSBio	
CatalogID:	LS-B72
Validation:	This antibody replaces catalog number LS-C19014. It has been validated for use in the following assays: IHC.
Target:	delta-like 1 (Drosophila) (DLL1)
Synonyms:	DLL1 Antibody, Delta-like 1 (Drosophila) Antibody, Delta (Drosophila)-like 1 Antibody, Drosophila Delta homolog 1 Antibody, Delta-like protein 1 Antibody, Delta1 Antibody, H-Delta-1 Antibody, DL1 Antibody, Npa Antibody
Host	DLL1 antibody was produced in Rabbit
Clonality:	Polyclonal
Immunogen Species:	DLL1 antibody was raised against Mouse
Antigen Type:	Synthetic peptide
Immunogen:	DLL1 antibody was raised against synthetic peptide from mouse DLL1.
Specificity:	Amino acids 155-173 of Mouse DELTA-1. DELTA-1 is a mouse homolog of the Notch Delta ligand and is a member of the delta/serrate/jagged family. It plays a role in mediating cell fate decisions during hematopoiesis. It may play a role in cell-to-cell communication. Swiss Prot accession Q61483. Expected to cross-react with rat, human and chicken.
Epitope:	aa155-173
Reactivity:	Mouse, Human, Rat, Chicken
Purification:	Immunoaffinity purified
Presentation:	0.02 M potassium phosphate, 0.15 M sodium chloride, pH 7.2, 0.01% sodium azide.
Recommended Storage:	+4°C or -20°C, Avoid repeated freezing and thawing.
Usage Summary:	Immunohistochemistry: LS-B72 was validated for use in immunohistochemistry on a panel of 21 formalin-fixed, paraffin-embedded (FFPE) human tissues after heat induced antigen retrieval in pH 6.0 citrate buffer. After incubation with the primary antibody, slides were incubated with biotinylated secondary antibody, followed by alkaline phosphatase-streptavidin and chromogen. The stained slides were evaluated by a pathologist to confirm staining specificity. The optimal working concentration for LS-B72 was determined to be 10 ug/ml.
Uses:	IHC - Paraffin (10 µg/ml), ELISA (Optimal dilution to be determined by the researcher)
Size:	50 µg
Concentration:	1 mg/ml

Immunohistochemistry Image:



Anti-DLL1 antibody IHC of human brain. Immunohistochemistry of formalin-fixed, paraffin-embedded tissue after heat-induced antigen retrieval. Antibody LS-B72 concentration 10 ug/ml.

Requested From:

Japan

Laboratory Reagent For In Vitro Research Use Only

Not for resale without prior written consent from LifeSpan BioSciences, Inc.

Created on 9/24/2014

© 2014 LifeSpan BioSciences