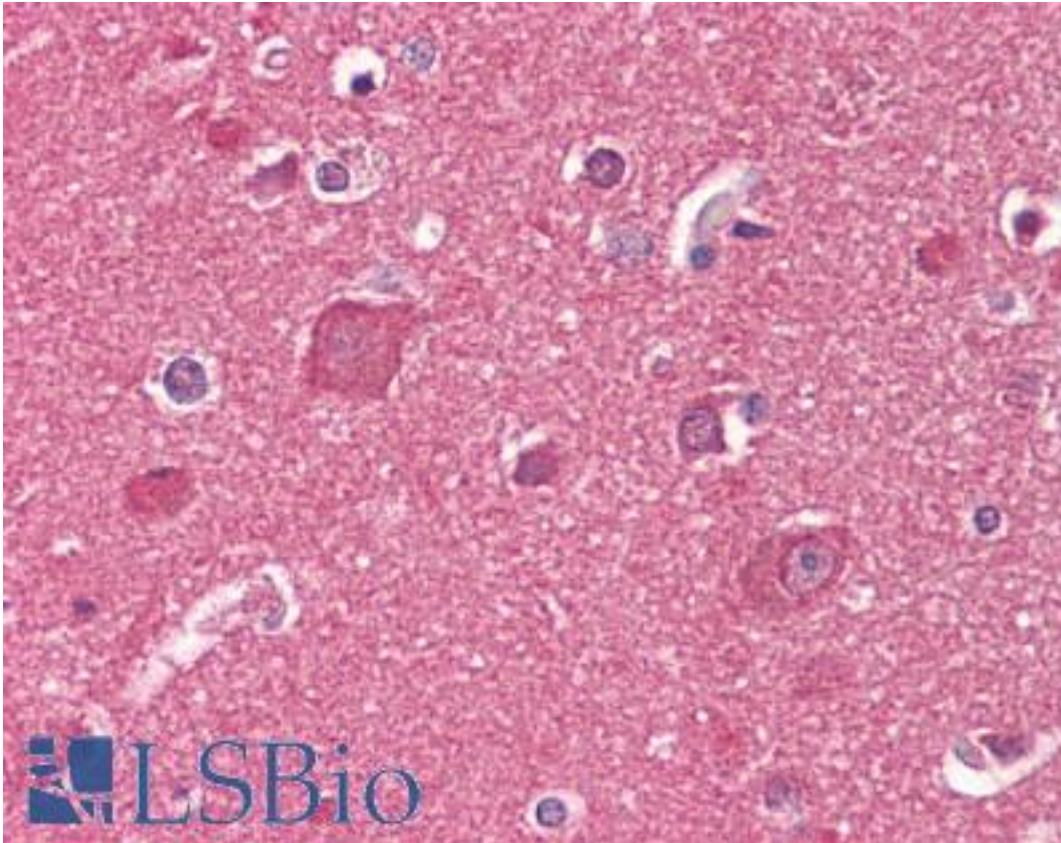


RTN1 / Reticulon 1 Mouse anti-Human Monoclonal (RNL-2) Antibody - LS-B7188 - LSBio	
CatalogID:	LS-B7188
Validation:	This antibody replaces catalog number LS-C146785. It has been validated for use in the following assays: IHC-P.
Target:	reticulon 1 (RTN1)
Synonyms:	RTN1 Antibody, Reticulon-1 Antibody, NSP Antibody, Reticulon 1 Antibody
Family / Subfamily:	Reticulon
Host	RTN1 antibody was produced in Mouse
Clonality:	Monoclonal
Isotype:	IgG1
Clone Name:	RNL-2
Immunogen Species:	RTN1 / Reticulon 1 antibody was raised against Human
Immunogen:	RTN1 / Reticulon 1 antibody was raised against small cell lung cancer cell line NCI-H82
Specificity:	Recognizes an epitope located within the region of amino acids 421-589 of the neuro-endocrine specific protein Reticulon-1A (NSP-A), which is also present in the N-terminal part of Reticulon-1B (NSP-B). In normal tissues, antibody reacts with brain Purkinje cells, pancreatic islet cells, cells in the pituitary gland and some (peripheral) nerve fibers. In addition, a few epithelia show positive staining.
Reactivity:	Human, Monkey, Rabbit
Purification:	Purified
Presentation:	PBS containing 0.09% sodium azide
Recommended Storage:	Short term 4°C, long term aliquot and store at -20°C, avoid freeze thaw cycles. Store undiluted.
Uses:	IHC - Paraffin (10 µg/ml), IHC - Frozen (1:25 - 1:200), ICC, Western blot (1:100 - 1:1000), Flow Cytometry (1:25 - 1:200) (Optimal dilution to be determined by the researcher)
Size:	50 µg
Concentration:	1 mg/ml

Immunohistochemistry Image:



Anti-Reticulon 1/2 antibody IHC of human brain, cortex. Immunohistochemistry of formalin-fixed, paraffin-embedded tissue after heat-induced antigen retrieval. Antibody LS-B7188 concentration 10 ug/ml.

Requested From:

Japan

Laboratory Reagent For In Vitro Research Use Only

Not for resale without prior written consent from LifeSpan BioSciences, Inc.

Created on 9/24/2014

© 2014 LifeSpan BioSciences