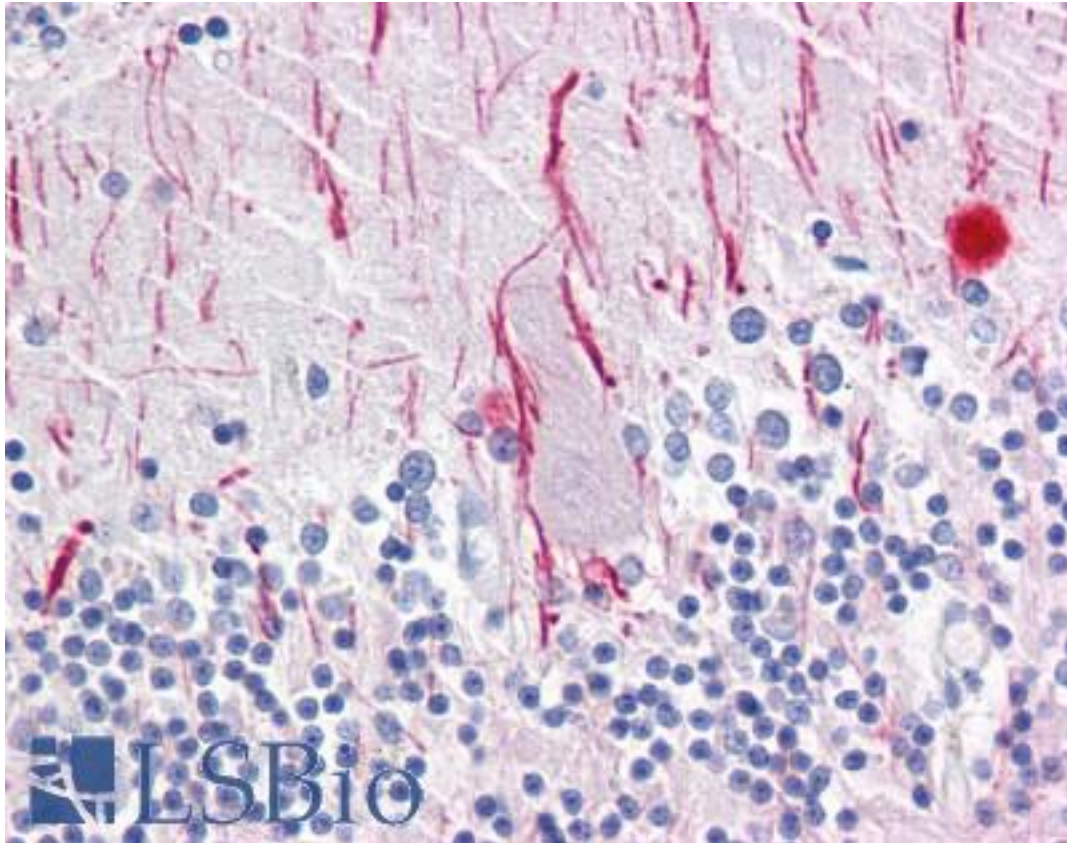


NEFH / NF-H Mouse anti-Human Monoclonal (RNF405) Antibody - LS-B7187 - LSBio

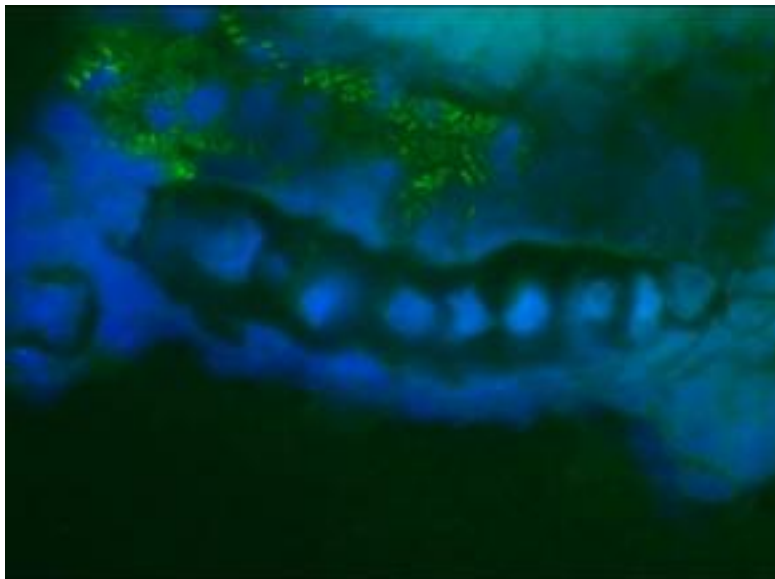
<b>CatalogID:</b>	LS-B7187
<b>Validation:</b>	This antibody replaces catalog number LS-C146781. It has been validated for use in the following assays: IHC-P.
<b>Target:</b>	neurofilament, heavy polypeptide (NEFH)
<b>Synonyms:</b>	NEFH Antibody, 200 kDa neurofilament protein Antibody, KIAA0845 Antibody, NFH Antibody, NF-H Antibody
<b>Host</b>	NEFH antibody was produced in Mouse
<b>Clonality:</b>	Monoclonal
<b>Isotype:</b>	IgG2a
<b>Clone Name:</b>	RNF405
<b>Immunogen Species:</b>	NEFH / NF-H antibody was raised against Human
<b>Immunogen:</b>	NEFH / NF-H antibody was raised against neurofilament preparation of calf brain tissue
<b>Specificity:</b>	Reacts exclusively with the phosphorylated isoform of the 200 kD neurofilament protein.
<b>Reactivity:</b>	Human, Monkey, Mouse, Rat, Bovine, Dog, Guinea pig, Hamster, Rabbit, Sheep, Chicken, Xenopus
<b>Purification:</b>	Purified
<b>Presentation:</b>	PBS containing 0.09% sodium azide
<b>Recommended Storage:</b>	Short term 4°C, long term aliquot and store at -20°C, avoid freeze thaw cycles. Store undiluted.
<b>Uses:</b>	IHC - Paraffin (10 µg/ml), IHC - Frozen (1:50 - 1:100), Western blot (1:100 - 1:500) (Optimal dilution to be determined by the researcher)
<b>Size:</b>	50 µg
<b>Concentration:</b>	1 mg/ml

**Immunohistochemistry Image:**



Anti-NEFH antibody IHC of human brain, cerebellum. Immunohistochemistry of formalin-fixed, paraffin-embedded tissue after heat-induced antigen retrieval. Antibody LS-B7187 concentration 10 ug/ml.

**Immunohistochemistry Image:**



Immunofluorescence staining of a 9 days old zebrafish embryo

**Requested From:**

Japan

Laboratory Reagent For In Vitro Research Use Only

Not for resale without prior written consent from LifeSpan BioSciences, Inc.

Created on 9/24/2014

© 2014 LifeSpan BioSciences