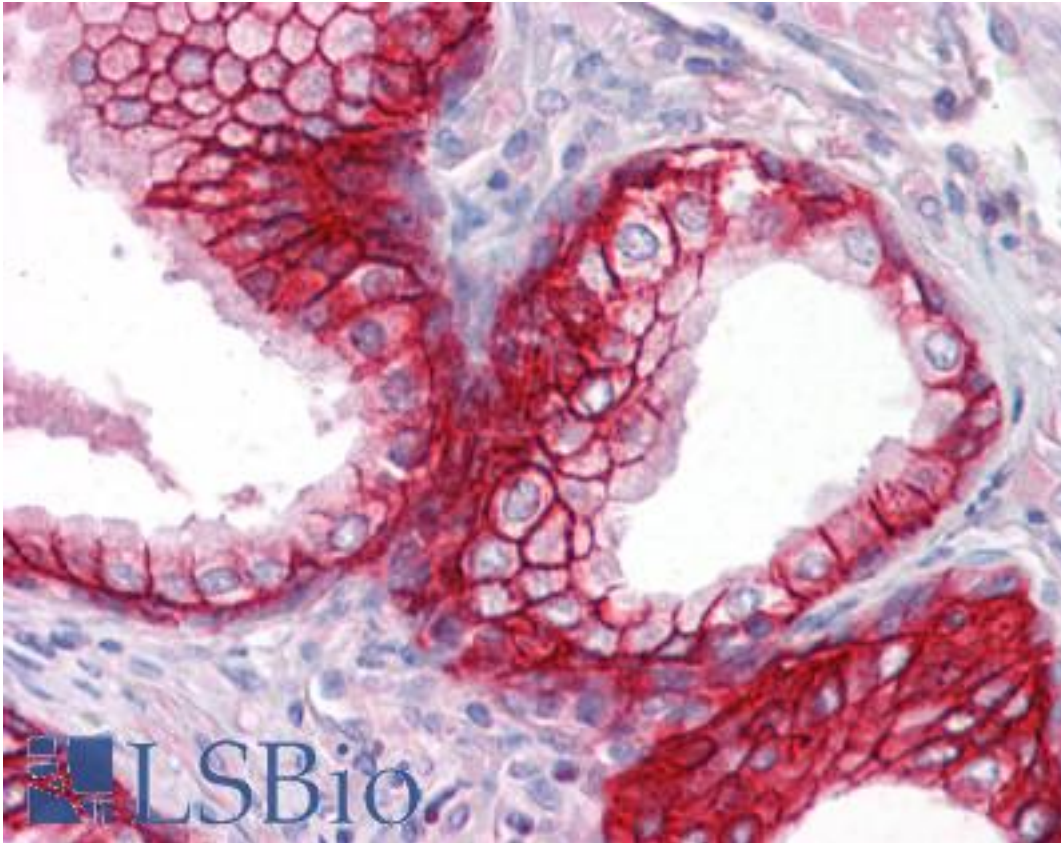


ESA / EPCAM Mouse anti-Human Monoclonal (VU1D9 ) Antibody - LS-B7176 - LSBio	
<b>CatalogID:</b>	LS-B7176
<b>Validation:</b>	This antibody replaces catalog number LS-C146742. It has been validated for use in the following assays: IHC-P.
<b>Target:</b>	epithelial cell adhesion molecule (EPCAM)
<b>Synonyms:</b>	EPCAM Antibody, 323/A3 Antibody, ACSTD1 Antibody, 17-1A Antibody, CD326 Antibody, EGP Antibody, EGP34 Antibody, Epithelial glycoprotein Antibody, GA733 -2 Antibody, HNPCC8 Antibody, Ep-CAM Antibody, ESA Antibody, HEGP314 Antibody, KS 1/4 antigen Antibody, KS1/4 Antibody, KSA Antibody, M1S2 Antibody, MIC18 Antibody, MK-1 Antibody, MH99 Antibody, TROP1 Antibody, TACST-1 Antibody, TACSTD1 Antibody, CD326 antigen Antibody, CO-17A Antibody, DIAR5 Antibody, EGP-2 Antibody, EGP314 Antibody, EGP40 Antibody, Epithelial glycoprotein 314 Antibody, HEA125 Antibody, Ly74 Antibody, M4S1 Antibody, MOC31 Antibody
<b>Host</b>	EPCAM antibody was produced in Mouse
<b>Clonality:</b>	Monoclonal
<b>Isotype:</b>	IgG1
<b>Clone Name:</b>	VU1D9
<b>Immunogen Species:</b>	ESA / EPCAM antibody was raised against Human
<b>Immunogen:</b>	ESA / EPCAM antibody was raised against nCI-H69 small cell lung carcinoma cell line
<b>Specificity:</b>	Reacts with the first EGF repeat in the extracellular domain of Ep-CAM. The epitope is sensitive for reducing agents. Detects Ep-CAM in most simple, pseudostratified and transitional epithelia and in the majority of human carcinomas.
<b>Reactivity:</b>	Human
<b>Purification:</b>	Purified
<b>Presentation:</b>	PBS containing 0.09% sodium azide
<b>Recommended Storage:</b>	Short term 4°C, long term aliquot and store at -20°C, avoid freeze thaw cycles. Store undiluted.
<b>Usage Summary:</b>	Western blots should be carried out under non-reducing conditions.
<b>Uses:</b>	IHC - Paraffin (10 µg/ml), IHC - Frozen (1:25 - 1:200), ICC, Western blot (1:100 - 1:1000), Flow Cytometry (1:25 - 1:200) (Optimal dilution to be determined by the researcher)
<b>Size:</b>	50 µg
<b>Concentration:</b>	1 mg/ml

**Immunohistochemistry Image:**



Anti-EPCAM antibody IHC of human prostate. Immunohistochemistry of formalin-fixed, paraffin-embedded tissue after heat-induced antigen retrieval. Antibody LS-B7176 concentration 10 ug/ml.

**Requested From:**

Japan

Laboratory Reagent For In Vitro Research Use Only

Not for resale without prior written consent from LifeSpan BioSciences, Inc.

Created on 9/24/2014

© 2014 LifeSpan BioSciences