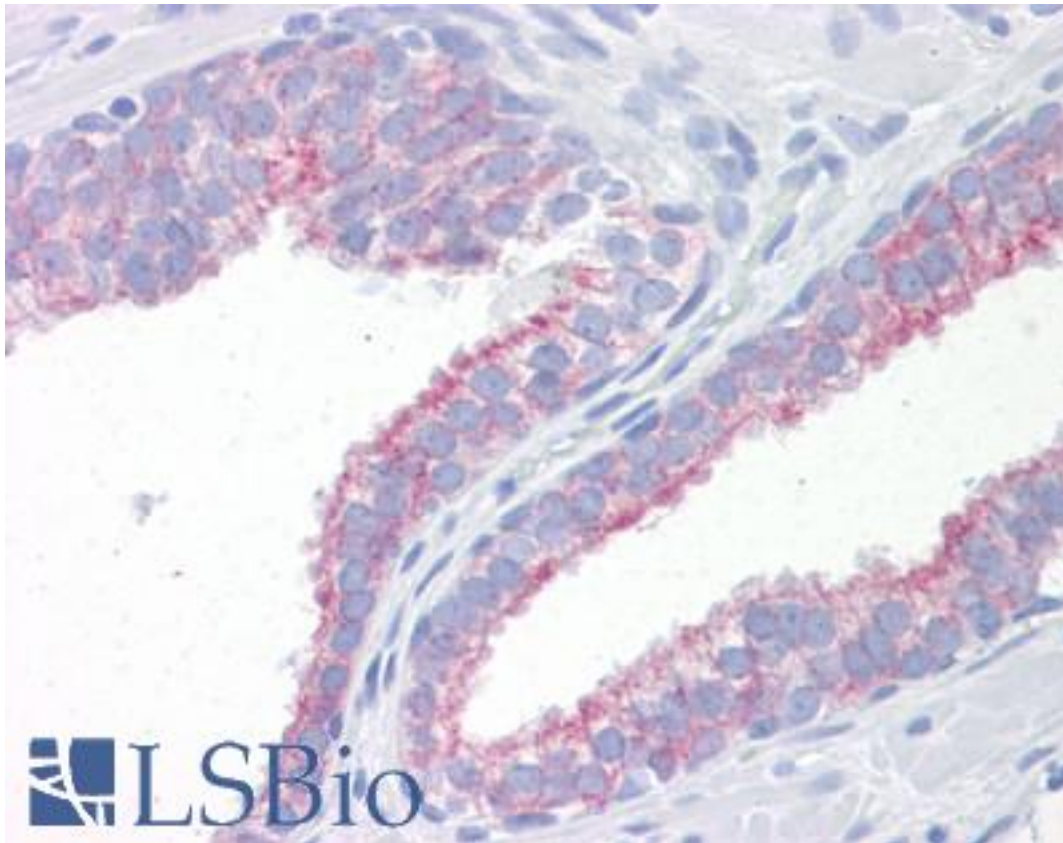


| KRT18 / CK18 / Cytokeratin 18 Mouse anti-Human Monoclonal (DE-K18) Antibody - LS-B7171 - LSBio | |
|--|---|
| CatalogID: | LS-B7171 |
| Validation: | This antibody replaces catalog number LS-C146733. It has been validated for use in the following assays: IHC-P. |
| Target: | keratin 18 (KRT18) |
| Synonyms: | KRT18 Antibody, CK-18 Antibody, Cytokeratin 18 Antibody, Cytokeratin-18 Antibody, K18 Antibody, Keratin 18 Antibody, CYK18 Antibody, Keratin-18 Antibody |
| Family / Subfamily: | Keratin / not assigned-Keratin |
| Host | KRT18 antibody was produced in Mouse |
| Clonality: | Monoclonal |
| Isotype: | IgG1 |
| Clone Name: | DE-K18 |
| Immunogen Species: | KRT18 / CK18 / Cytokeratin 18 antibody was raised against Human |
| Immunogen: | KRT18 / CK18 / Cytokeratin 18 antibody was raised against cytoskeletal preparation extracted from the human vulvar squamous carcinoma cell line A431 |
| Specificity: | Reacts exclusively with cytokeratin 18 which is present in glandular epithelial cells of the digestive, respiratory, and urogenital tracts, endocrine and exocrine cells and mesothelial cells, as well as adenocarcinomas originating from them. |
| Reactivity: | Human, Cat, Dog |
| Purification: | Purified |
| Presentation: | PBS containing 0.09% sodium azide |
| Recommended Storage: | Short term 4°C, long term aliquot and store at -20°C, avoid freeze thaw cycles. Store undiluted. |
| Usage Summary: | |
| Uses: | IHC - Paraffin (20 µg/ml), IHC - Frozen (1:100 - 1:200), ICC, Western blot (1:100 - 1:1000), Flow Cytometry (1:100 - 1:200) (Optimal dilution to be determined by the researcher) |
| Size: | 50 µg |
| Concentration: | 1 mg/ml |

Immunohistochemistry Image:



Anti-KRT18 / Cytokeratin 18 antibody IHC of human prostate. Immunohistochemistry of formalin-fixed, paraffin-embedded tissue after heat-induced antigen retrieval. Antibody LS-B7171 concentration 20 ug/ml.

Requested From:

Japan

Laboratory Reagent For In Vitro Research Use Only

Not for resale without prior written consent from LifeSpan BioSciences, Inc.

Created on 9/24/2014

© 2014 LifeSpan BioSciences