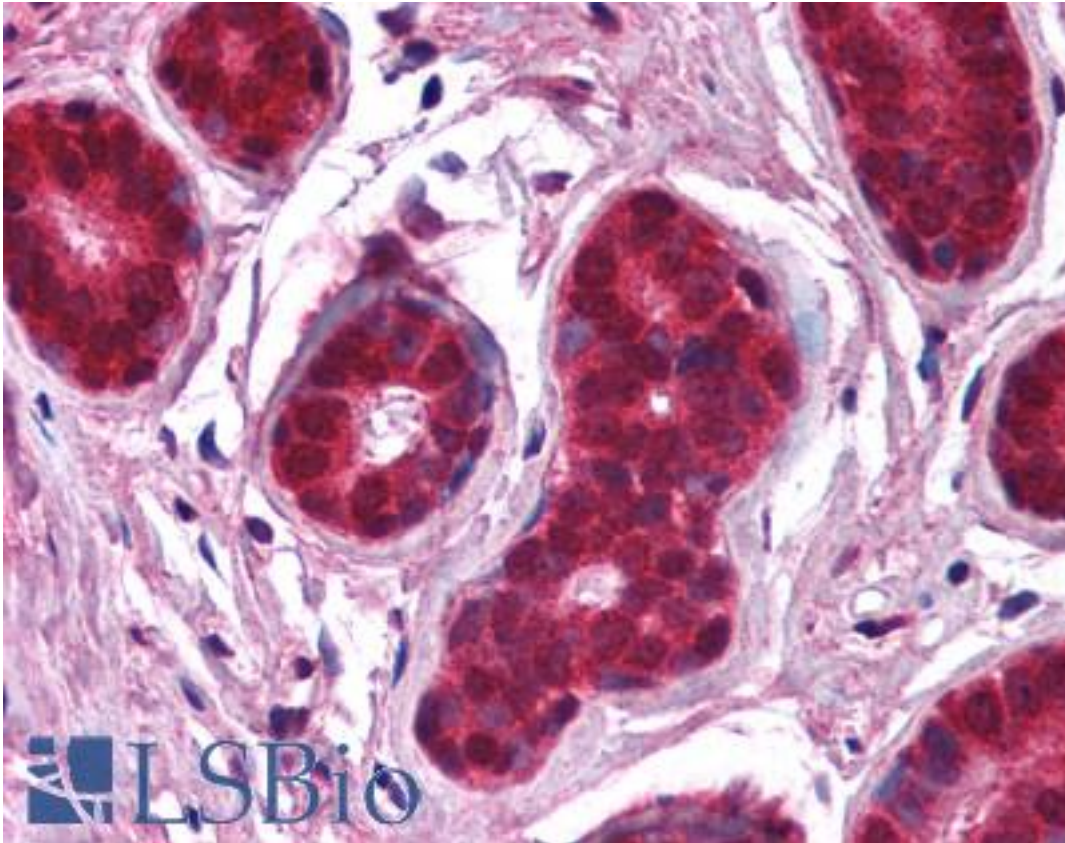


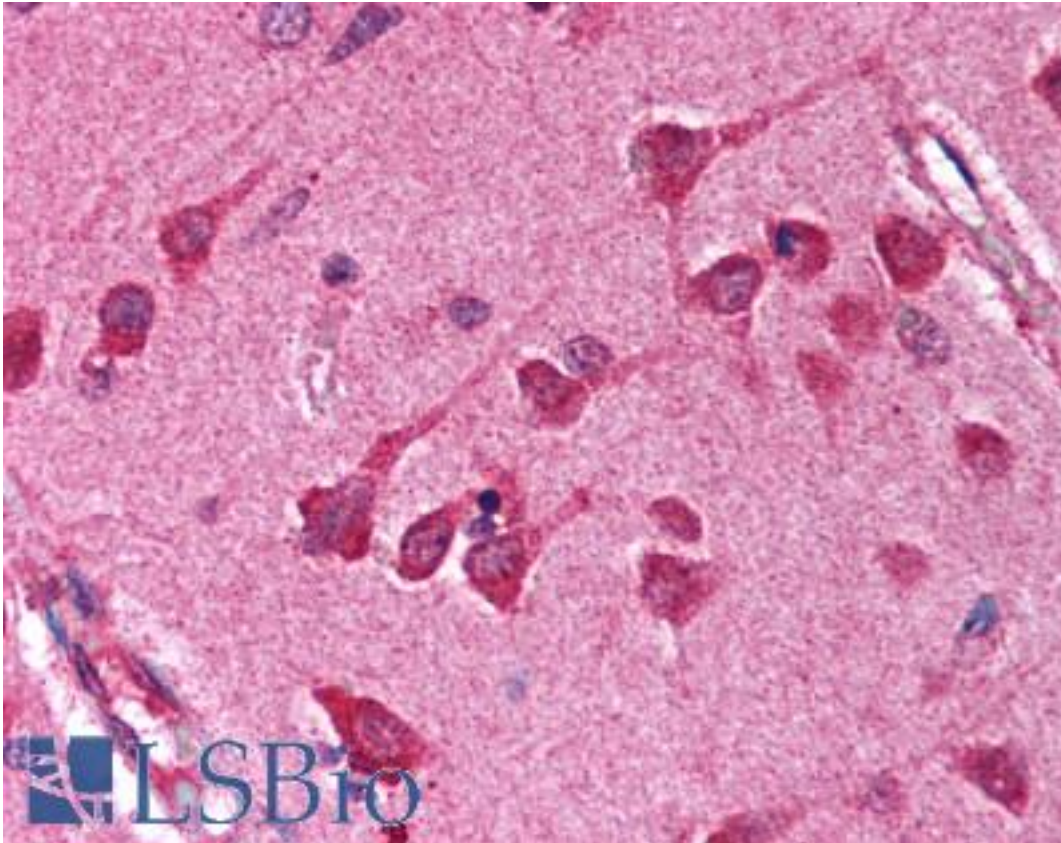
NFKBIA / IKB Alpha / IKBA Rabbit anti-Human Polyclonal (C-Terminus) Antibody - LS-B717 - LSBio	
CatalogID:	LS-B717
Validation:	This antibody replaces catalog number LS-C19027. It has been validated for use in the following assays: IHC.
Target:	nuclear factor of kappa light polypeptide gene enhancer in B-cells inhibitor, alpha (NFKBIA)
Synonyms:	NFKBIA Antibody, Ikb-alpha Antibody, IKBA Antibody, IkappaBalphalpha Antibody, MAD3 Antibody, NF-kappa-B inhibitor alpha Antibody, NFKBI Antibody, I-kappa-B-alpha Antibody, IKB Alpha Antibody, MAD-3 Antibody
Family / Subfamily:	Apoptosis / not assigned-Other
Host	NFKBIA antibody was produced in Rabbit
Clonality:	Polyclonal
Immunogen Species:	NFKBIA / IKB Alpha / IKBA antibody was raised against Human
Specificity:	IkBa peptide corresponding to a region near the C-terminus of the human protein conjugated to Keyhole Limpet Hemocyanin (KLH).
Epitope:	C-Terminus
Reactivity:	Human, Mouse, Rat
Purification:	Delipidated and defibrinated
Presentation:	0.02 M potassium phosphate, 0.15 M sodium chloride, pH 7.2, 0.1% sodium azide.
Recommended Storage:	+4°C or -20°C, Avoid repeated freezing and thawing.
Usage Summary:	Immunohistochemistry: LS-B717 was validated for use in immunohistochemistry on a panel of 21 formalin-fixed, paraffin-embedded (FFPE) human tissues after heat induced antigen retrieval in pH 6.0 citrate buffer. After incubation with the primary antibody, slides were incubated with biotinylated secondary antibody, followed by alkaline phosphatase-streptavidin and chromogen. The stained slides were evaluated by a pathologist to confirm staining specificity. The optimal working concentration for LS-B717 was determined to be 1:1000.
Uses:	IHC - Paraffin (1:1000), Immunofluorescence, Western blot, Immunoprecipitation, ELISA (Optimal dilution to be determined by the researcher)
Size:	50 µl
Concentration:	90 mg/ml

Immunohistochemistry Image:



Anti-IKB Alpha antibody IHC of human breast. Immunohistochemistry of formalin-fixed, paraffin-embedded tissue after heat-induced antigen retrieval. Antibody LS-B717 dilution 1:1000.

Immunohistochemistry Image:



Anti-IKB Alpha antibody IHC of human brain, cortex. Immunohistochemistry of formalin-fixed, paraffin-embedded tissue after heat-induced antigen retrieval. Antibody LS-B717 dilution 1:1000.

Requested From:

Japan

Laboratory Reagent For In Vitro Research Use Only

Not for resale without prior written consent from LifeSpan BioSciences, Inc.

Created on 9/24/2014

© 2014 LifeSpan BioSciences