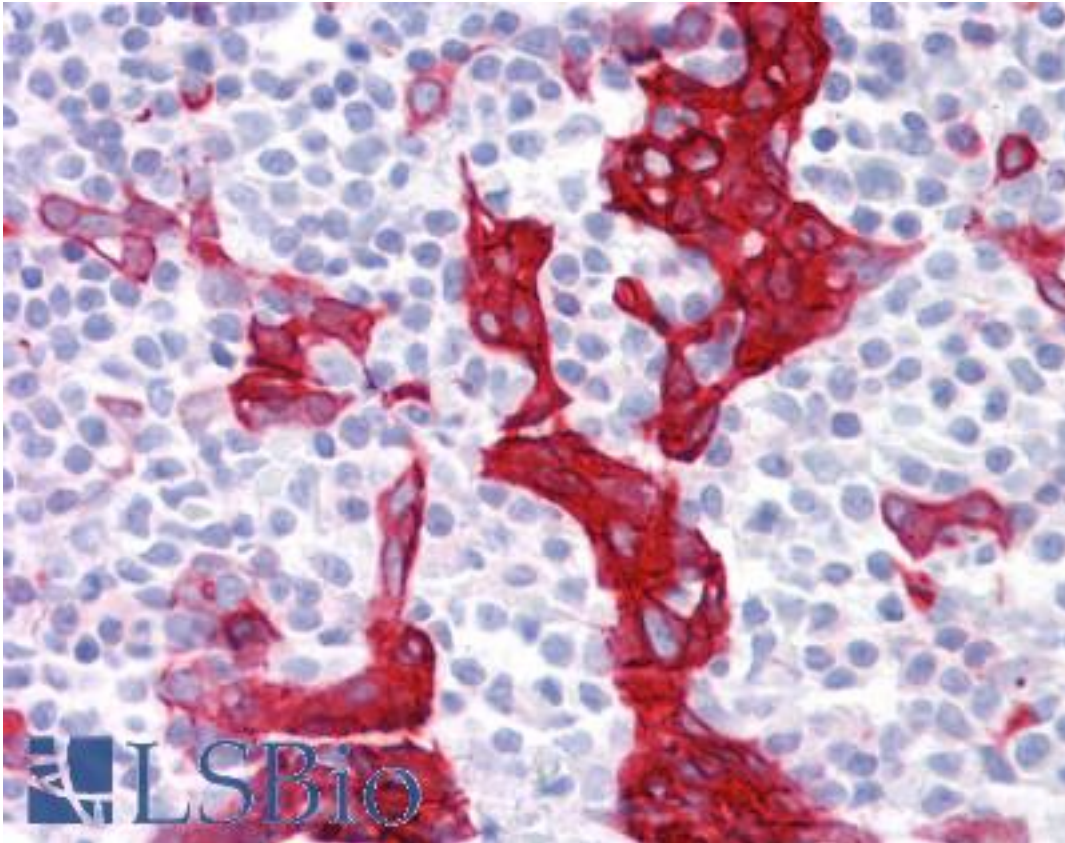


Cytokeratin 10+13 Mouse anti-Human Monoclonal (DE-K13) Antibody - LS-B7168 - LSBio

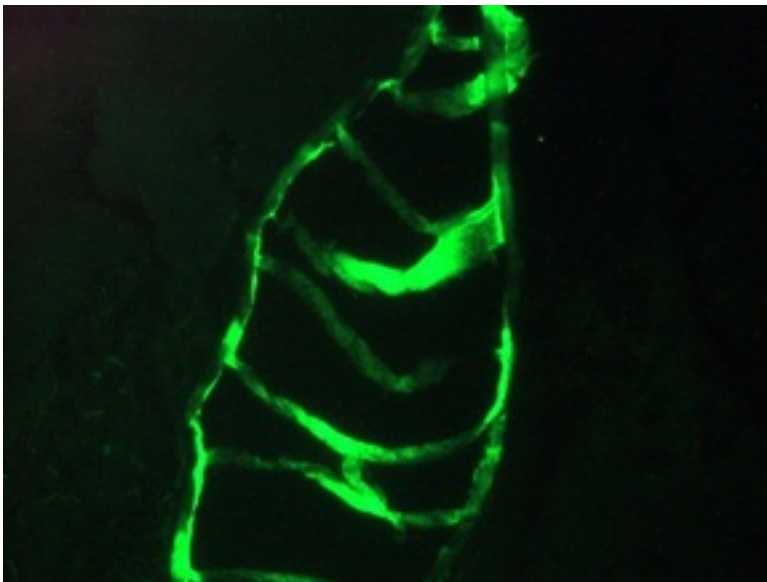
CatalogID:	LS-B7168
Validation:	This antibody replaces catalog number LS-C146727. It has been validated for use in the following assays: IHC-P.
Target:	Keratin 10/Keratin 13
Host	Mouse
Clonality:	Monoclonal
Isotype:	IgG2a
Clone Name:	DE-K13
Immunogen Species:	Human
Antigen Type:	Protein fraction
Immunogen:	Cytoskeletal preparation extracted from human ectocervical epithelium
Specificity:	Reacts with cytokeratin 10 and 13 in fixed cells and on frozen tissues, but exclusively with cytokeratin 13 in formalin-fixed, paraffin-embedded tissues. Cytokeratin 10 is present in keratinizing stratified epithelia and in differentiated areas of highly differentiated squamous cell carcinomas, while cytokeratin 13 is present in non-cornified squamous epithelia, except cornea, and transitional epithelial regions, with the exception of basal cell layers of some stratified epithelia, as well as carcinomas derived from these tissues.
Reactivity:	Human, Cat
Purification:	Purified
Presentation:	PBS containing 0.09% sodium azide
Recommended Storage:	Short term 4°C, long term aliquot and store at -20°C, avoid freeze thaw cycles. Store undiluted.
Usage Summary:	This antibody will react exclusively with cytokeratin 13 in formalin-fixed, paraffin-embedded tissues.
Uses:	IHC - Paraffin (10 µg/ml), IHC - Frozen (1:100 - 1:200), ICC, Western blot (1:100 - 1:1000), Flow Cytometry (1:100 - 1:200) (Optimal dilution to be determined by the researcher)
Size:	50 µg
Concentration:	1 mg/ml

Immunohistochemistry Image:



Anti-Keratin 10/13 antibody IHC of human tonsil. Immunohistochemistry of formalin-fixed, paraffin-embedded tissue after heat-induced antigen retrieval. Antibody LS-B7168 concentration 10 ug/ml.

Immunohistochemistry Image:



Immunofluorescence staining of a 7 days old zebrafish embryo

Requested From:

Japan

Laboratory Reagent For In Vitro Research Use Only

Not for resale without prior written consent from LifeSpan BioSciences, Inc.

Created on 9/24/2014

© 2014 LifeSpan BioSciences