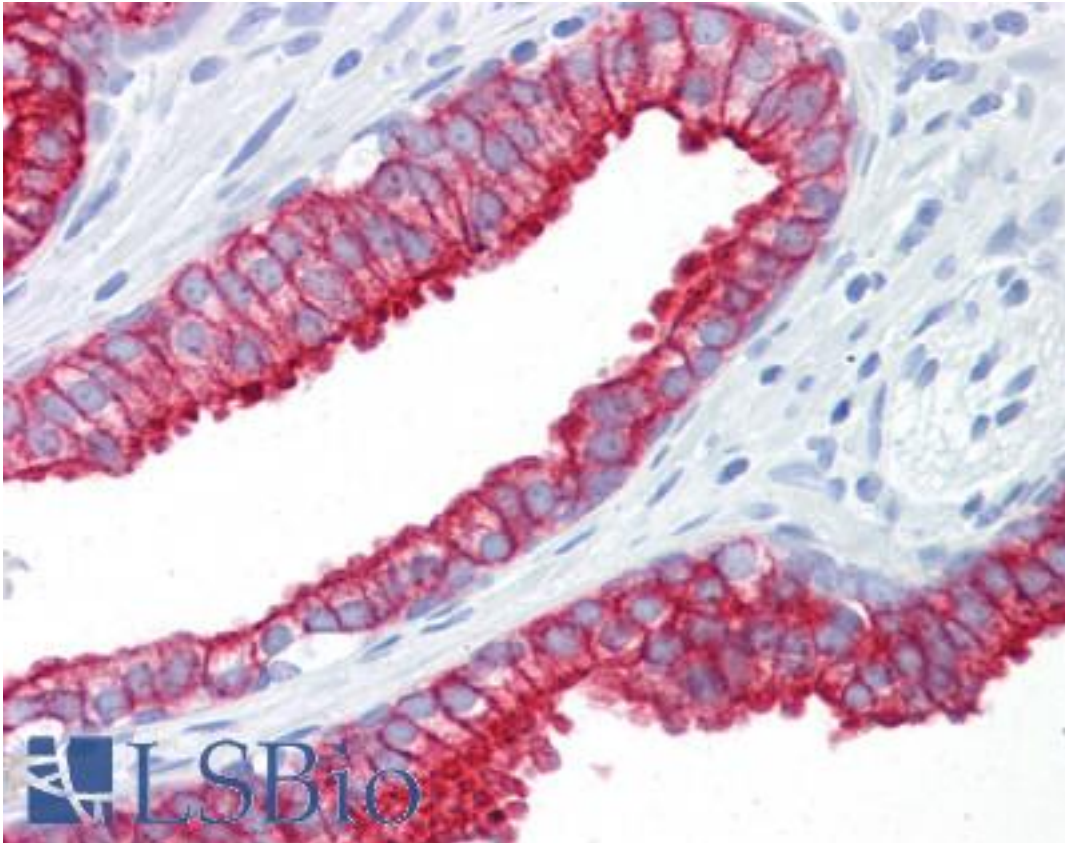


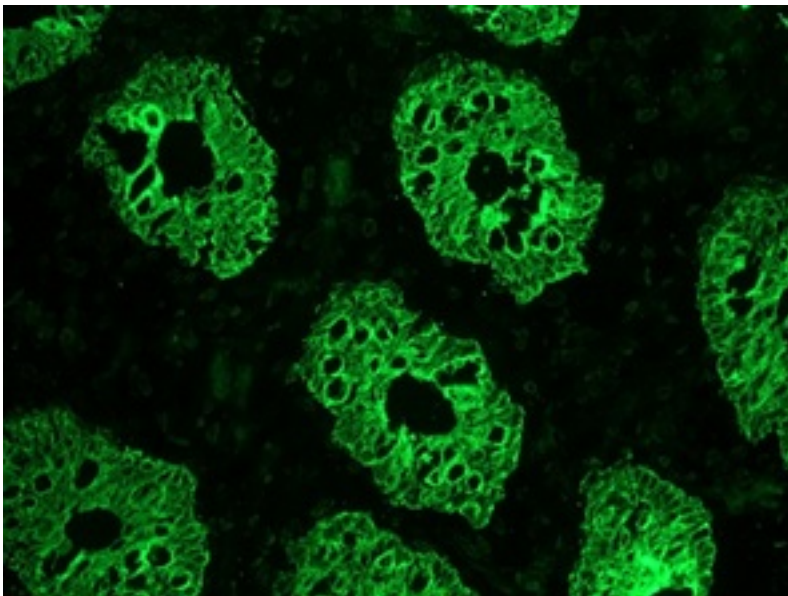
KRT8 / CK8 / Cytokeratin 8 Mouse anti-Human Monoclonal (M20) Antibody - LS-B7166 - LSBio	
<b>CatalogID:</b>	LS-B7166
<b>Validation:</b>	This antibody replaces catalog number LS-C146724. It has been validated for use in the following assays: IHC-P.
<b>Target:</b>	keratin 8 (KRT8)
<b>Synonyms:</b>	KRT8 Antibody, CARD2 Antibody, CK-8 Antibody, CYK8 Antibody, Cytokeratin-8 Antibody, CK8 Antibody, K2C8 Antibody, K8 Antibody, KO Antibody, Keratin-8 Antibody, Type-II keratin Kb8 Antibody, Cytokeratin 8 Antibody, Keratin 8 Antibody
<b>Family / Subfamily:</b>	Keratin / not assigned-Keratin
<b>Host</b>	KRT8 antibody was produced in Mouse
<b>Clonality:</b>	Monoclonal
<b>Isotype:</b>	IgG1
<b>Clone Name:</b>	M20
<b>Immunogen Species:</b>	KRT8 / CK8 / Cytokeratin 8 antibody was raised against Human
<b>Immunogen:</b>	KRT8 / CK8 / Cytokeratin 8 antibody was raised against keratin isolated from the human breast carcinoma cell line MCF-7
<b>Specificity:</b>	Reacts with glandular epithelial cells (endocrine and exocrine) as well as mesothelial cells and epithelia of the digestive, respiratory and urogenital tract. Also most adenocarcinomas derived from these cells are positive. The epitope has been mapped to amino acids 353-367 on the alpha helical rod domain of cytokeratin 8. Reacts with most mammals.
<b>Reactivity:</b>	Human, Rat, Rabbit
<b>Purification:</b>	Purified
<b>Presentation:</b>	PBS containing 0.09% sodium azide
<b>Recommended Storage:</b>	Short term 4°C, long term aliquot and store at -20°C, avoid freeze thaw cycles. Store undiluted.
<b>Uses:</b>	IHC - Paraffin (10 µg/ml), IHC - Frozen (1:100 - 1:200 ), ICC, Western blot (1:100 - 1:1000), Flow Cytometry (Optimal dilution to be determined by the researcher)
<b>Size:</b>	50 µg
<b>Concentration:</b>	1 mg/ml

**Immunohistochemistry Image:**



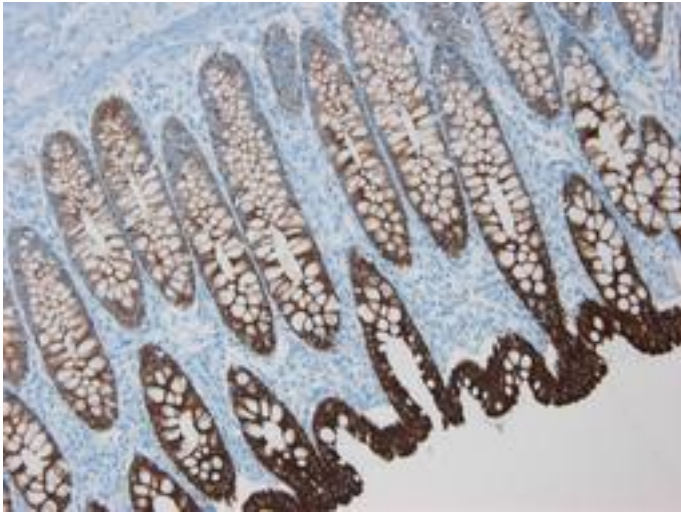
Anti-KRT8 / Cytokeratin 8 antibody IHC of human prostate. Immunohistochemistry of formalin-fixed, paraffin-embedded tissue after heat-induced antigen retrieval. Antibody LS-B7166 concentration 10 ug/ml.

**Immunohistochemistry Image:**



Immunohistochemistry on frozen section of human colon

**Immunohistochemistry Image:**



Immunohistochemistry on paraffin section of human colon

**Requested From:**

Japan

Laboratory Reagent For In Vitro Research Use Only

Not for resale without prior written consent from LifeSpan BioSciences, Inc.

Created on 9/24/2014

© 2014 LifeSpan BioSciences