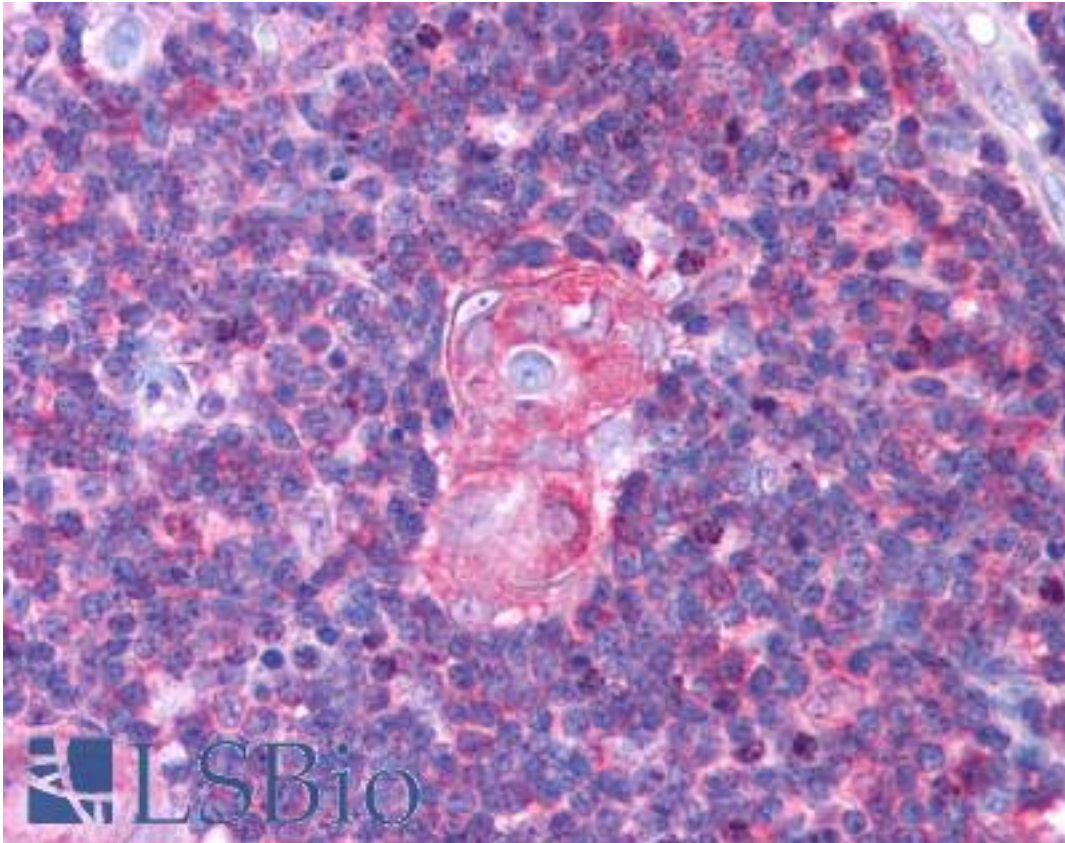


NFKB1 Rabbit anti-Human Polyclonal (N-Terminus) Antibody - LS-B716 - LSBio	
<b>CatalogID:</b>	LS-B716
<b>Validation:</b>	This antibody replaces catalog number LS-C18853. It has been validated for use in the following assays: IHC.
<b>Target:</b>	nuclear factor of kappa light polypeptide gene enhancer in B-cells 1 (NFKB1)
<b>Synonyms:</b>	NFKB1 Antibody, Ebp- 1 Antibody, EBP-1 Antibody, NF-KappaB p50 Antibody, NFkappaB Antibody, NFKB-p50 Antibody, KBF1 Antibody, NF-kappa-B Antibody, NF-kappaB Antibody, NF-kB1 Antibody, NFKB-p105 Antibody, p105 Antibody, p50 Antibody, DNA binding factor KBF1 Antibody, DNA-binding factor KBF1 Antibody, NF-kappabeta Antibody
<b>Family / Subfamily:</b>	Apoptosis / not assigned-Other
<b>Host</b>	NFKB1 antibody was produced in Rabbit
<b>Clonality:</b>	Polyclonal
<b>Immunogen Species:</b>	NFKB1 antibody was raised against Human
<b>Specificity:</b>	Human NFkB p50 (NFKB1) peptide corresponding to a region near the N-terminus of the human protein conjugated to Keyhole Limpet Hemocyanin (KLH).
<b>Epitope:</b>	N-Terminus
<b>Reactivity:</b>	Human
<b>Purification:</b>	Delipidated and defibrinated
<b>Presentation:</b>	0.01% sodium azide.
<b>Recommended Storage:</b>	+4°C or -20°C, Avoid repeated freezing and thawing.
<b>Usage Summary:</b>	Immunohistochemistry: LS-B716 was validated for use in immunohistochemistry on a panel of 21 formalin-fixed, paraffin-embedded (FFPE) human tissues after heat induced antigen retrieval in pH 6.0 citrate buffer. After incubation with the primary antibody, slides were incubated with biotinylated secondary antibody, followed by alkaline phosphatase-streptavidin and chromogen. The stained slides were evaluated by a pathologist to confirm staining specificity. The optimal working concentration for LS-B716 was determined to be 1:500.
<b>Uses:</b>	IHC - Paraffin (1:500), Immunofluorescence, Western blot (1:1000), Immunoprecipitation, ELISA, Gel shift (Optimal dilution to be determined by the researcher)
<b>Size:</b>	50 µl
<b>Concentration:</b>	85 mg/ml

**Immunohistochemistry Image:**



Anti-NFKB1 antibody IHC of human thymus. Immunohistochemistry of formalin-fixed, paraffin-embedded tissue after heat-induced antigen retrieval. Antibody LS-B716 dilution 1:500.

**Western Blot Image:**



Anti-NFKB p50 (NFKB1) Antibody - Western Blot. All incubations except color development were performed using TBS supplemented with 0.1% Tween-20 at room temperature. The membrane was blocked in 5% dry milk for 2 h. After washing, a 1:1000 dilution of the primary antibody was added to the membrane and incubated for 2 h. Washes with buffer were performed 4 times for 5 each. The western blot was incubated with secondary antibody (HRP Goat-a-Rabbit IgG [H&L]) diluted 1:2000 for 1 h. Washes with TBS preceded color development.

**Western Blot Image:**



Immunoblot of HeLa cell extract using a 1:1000 dilution of anti-NFKB1.

<b>Requested From:</b>	Japan
Laboratory Reagent For In Vitro Research Use Only	
Not for resale without prior written consent from LifeSpan BioSciences, Inc.	
Created on 9/24/2014	
© 2014 LifeSpan BioSciences	