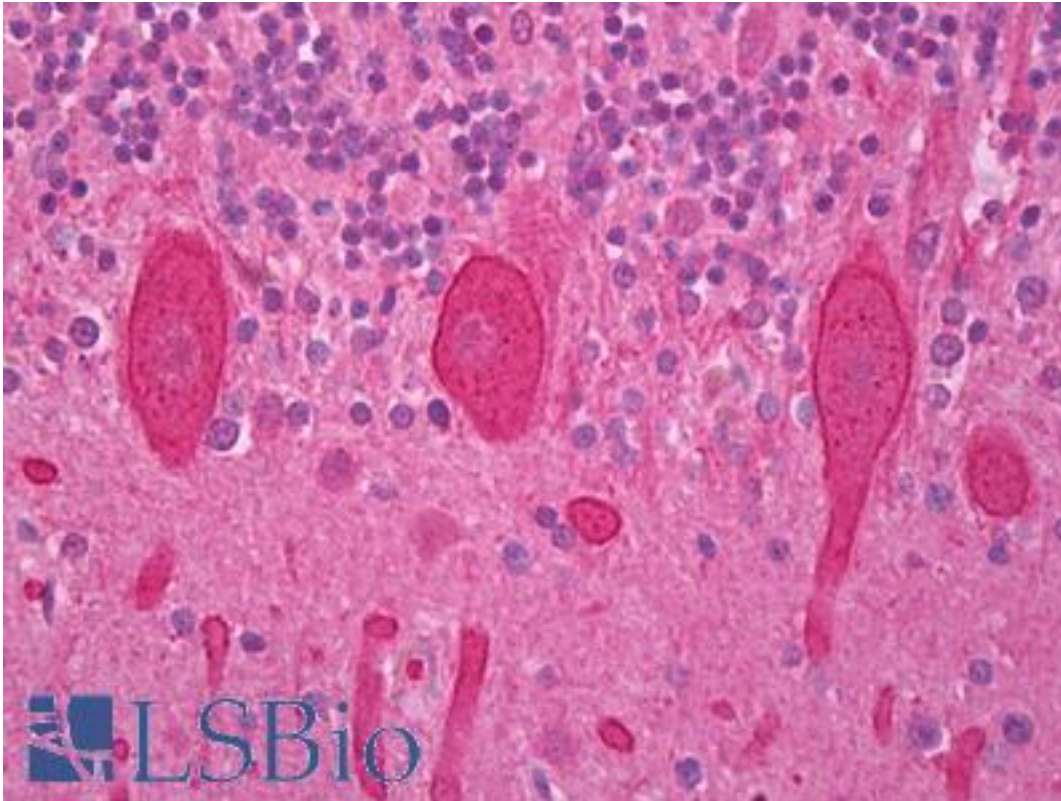


**PRKCG / PKC-Gamma Rabbit anti-Human Polyclonal Antibody - LS-B7153 - LSBio**

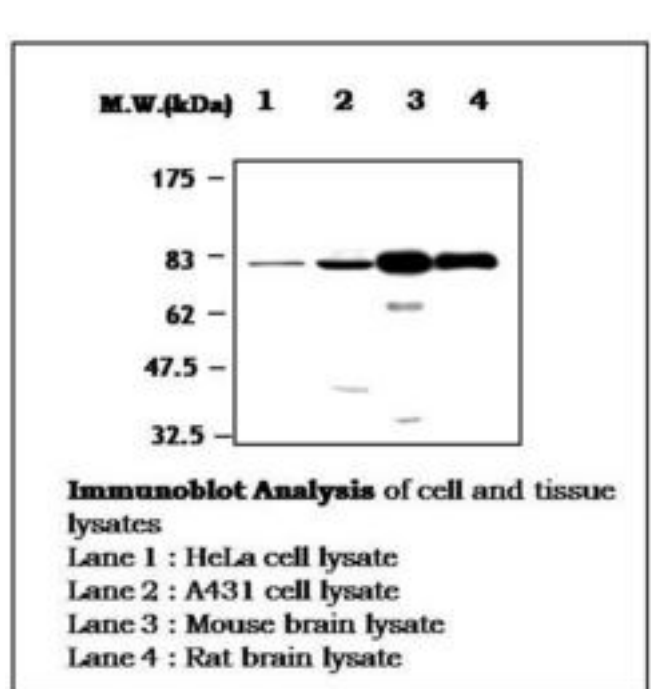
<b>CatalogID:</b>	LS-B7153
<b>Validation:</b>	This antibody replaces catalog number LS-C62276. It has been validated for use in the following assays: IHC-P.
<b>Target:</b>	protein kinase C, gamma (PRKCG)
<b>Synonyms:</b>	PRKCG Antibody, PKC-gamma Antibody, PRKC-gamma Antibody, Protein kinase C gamma Antibody, Protein kinase C gamma type Antibody, PKC Gamma Antibody, PKCC Antibody, PKCG Antibody, Pkcgamma Antibody, Protein kinase C, gamma Antibody, SCA14 Antibody
<b>Family / Subfamily:</b>	Protein Kinase / PKC
<b>Host</b>	PRKCG antibody was produced in Rabbit
<b>Clonality:</b>	Polyclonal
<b>Isotype:</b>	IgG
<b>Immunogen Species:</b>	PRKCG / PKC-Gamma antibody was raised against Human
<b>Antigen Type:</b>	Synthetic peptide
<b>Immunogen:</b>	PRKCG / PKC-Gamma antibody was raised against synthetic peptide from human PRKCG / PKC-Gamma.
<b>Reactivity:</b>	Human, Mouse, Rat
<b>Purification:</b>	Protein A purified
<b>Presentation:</b>	HEPES with 0.15M NaCl, 0.01% BSA, 0.03% sodium azide, and 50% glycerol
<b>Recommended Storage:</b>	Short term 4°C, long term aliquot and store at -20°C, avoid freeze thaw cycles.
<b>Uses:</b>	IHC - Paraffin (1:200), Western blot (1:2000) (Optimal dilution to be determined by the researcher)
<b>Size:</b>	50 µl

**Immunohistochemistry Image:**



Anti-PRKCG / PKC-Gamma antibody IHC of human brain, cerebellum, Purkinje cells. Immunohistochemistry of formalin-fixed, paraffin-embedded tissue after heat-induced antigen retrieval. Antibody LS-B7153 dilution 1:200.

**Western Blot Image:**



<b>Requested From:</b>	Japan
Laboratory Reagent For In Vitro Research Use Only	
Not for resale without prior written consent from LifeSpan BioSciences, Inc.	
Created on 9/24/2014	
© 2014 LifeSpan BioSciences	