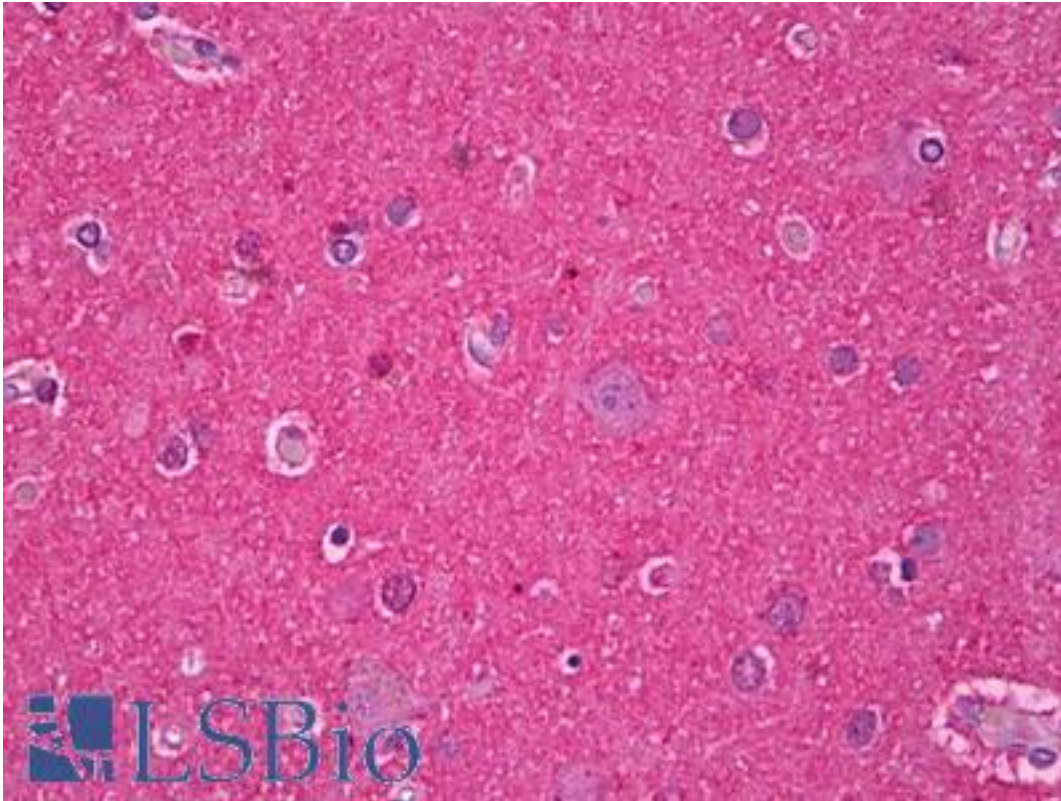


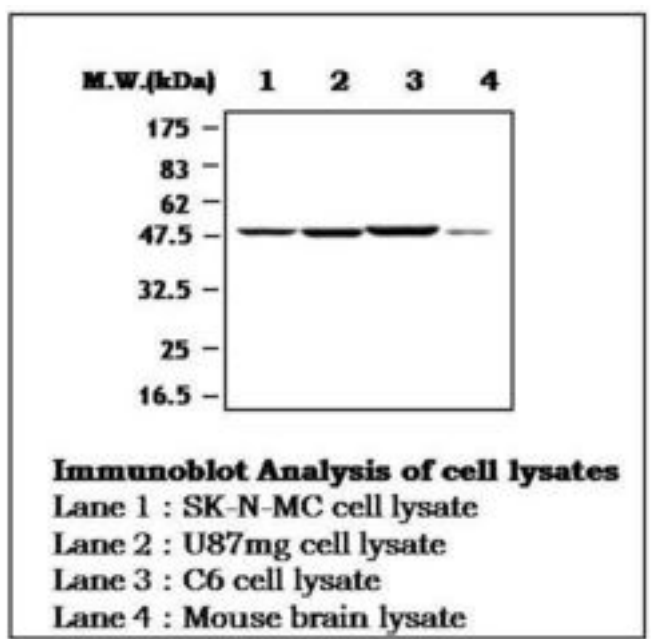
MAPT / TAU Rabbit anti-Human Polyclonal Antibody - LS-B7152 - LSBio	
CatalogID:	LS-B7152
Validation:	This antibody replaces catalog number LS-C62274. It has been validated for use in the following assays: IHC-P.
Target:	microtubule-associated protein tau (MAPT)
Synonyms:	MAPT Antibody, FTDP-17 Antibody, MSTD Antibody, Neurofibrillary tangle protein Antibody, PHF-tau Antibody, MTBT2 Antibody, PPND Antibody, DDPAC Antibody, MAPTL Antibody, MTBT1 Antibody, Paired helical filament-tau Antibody, TAU Antibody
Host	MAPT antibody was produced in Rabbit
Clonality:	Polyclonal
Immunogen Species:	MAPT / TAU antibody was raised against Human
Antigen Type:	Synthetic peptide
Immunogen:	MAPT / TAU antibody was raised against synthetic peptide (393 VYKSPVVSGD 402). Percent identity by BLAST analysis: Human, Chimpanzee, Gorilla, Orangutan, Gibbon, Monkey, Marmoset, Green monkey, Mouse, Rat, Goat, Elephant, Panda, Baboon, Porcine, Prairie vole, Dog, Bat, Bovine, Rabbit (100%).
Reactivity:	Human, Chimpanzee, Gorilla, Orangutan, Gibbon, Monkey, Mouse, Rat, Bat, Bovine, Dog, Goat, Rabbit
Purification:	Purified
Presentation:	HEPES with 0.15M NaCl, 0.01% BSA, 0.03% sodium azide, and 50% glycerol
Recommended Storage:	Short term 4°C, long term aliquot and store at -20°C, avoid freeze thaw cycles.
Uses:	IHC - Paraffin (1:200), Western blot (1:2000) (Optimal dilution to be determined by the researcher)
Size:	50 µl

Immunohistochemistry Image:



Anti-MAPT / Tau antibody IHC of human brain, cortex neuropil. Immunohistochemistry of formalin-fixed, paraffin-embedded tissue after heat-induced antigen retrieval. Antibody LS-B7152 dilution 1:200.

Western Blot Image:



Requested From:

Japan

Laboratory Reagent For In Vitro Research Use Only

Not for resale without prior written consent from LifeSpan BioSciences, Inc.

Created on 9/24/2014

© 2014 LifeSpan BioSciences