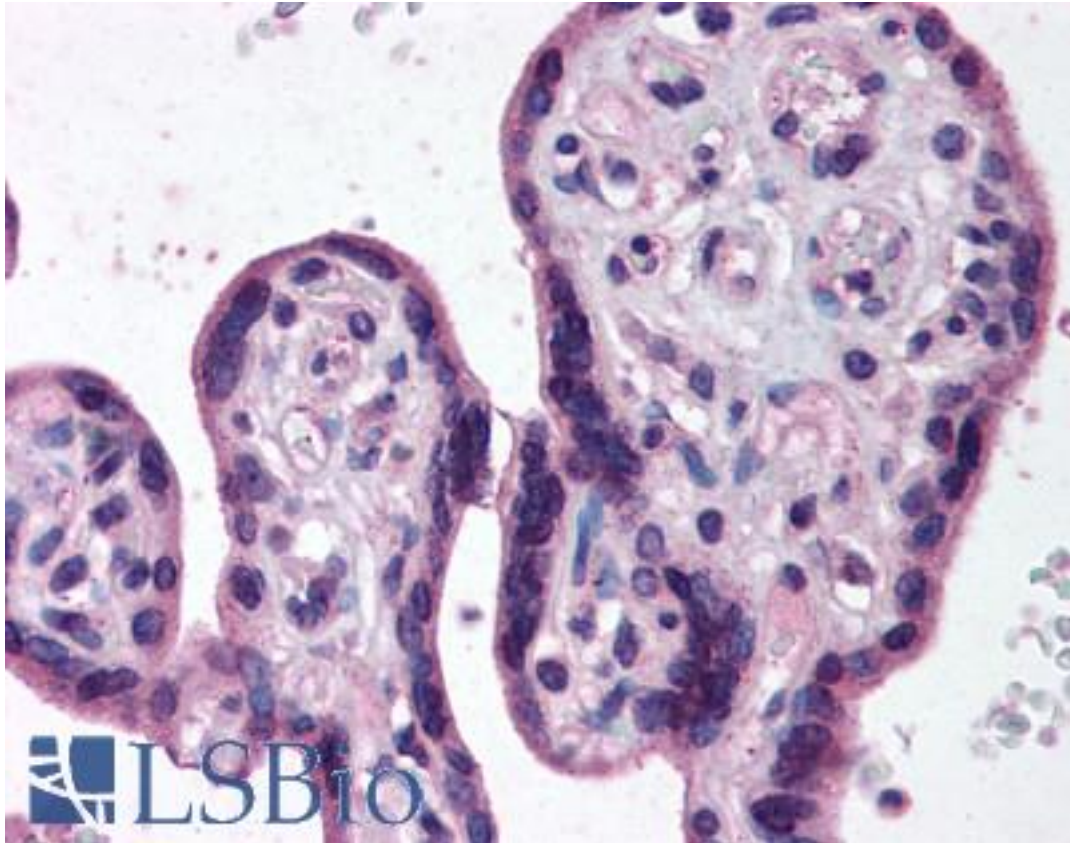


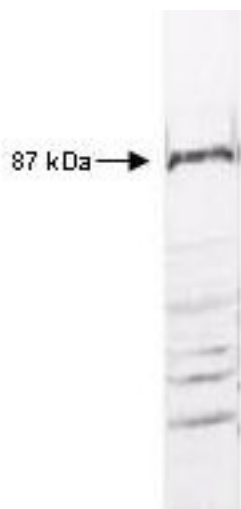
IKBKB / IKK2 / IKK Beta Rabbit anti-Human Polyclonal (C-Terminus) Antibody - LS-B715 - LSBio	
CatalogID:	LS-B715
Validation:	This antibody replaces catalog number LS-C18941. It has been validated for use in the following assays: IHC.
Target:	inhibitor of kappa light polypeptide gene enhancer in B-cells, kinase beta (IKBKB)
Synonyms:	IKBKB Antibody, Ikk 2 Antibody, IKK-B Antibody, IKK2 Antibody, IKKbeta Antibody, NFKBIKB Antibody, I-kappa-B kinase 2 Antibody, IKKB Antibody, I-kappa-B-kinase beta Antibody, Ikb kinase-beta Antibody, IKK Beta Antibody, IKK-beta Antibody
Family / Subfamily:	Protein Kinase / IKAPPAB
Host	IKBKB antibody was produced in Rabbit
Clonality:	Polyclonal
Immunogen Species:	IKBKB / IKK2 / IKK Beta antibody was raised against Human
Specificity:	IKKb peptide corresponding to the highly conserved C-terminus region of the human protein conjugated to Keyhole Limpet Hemocyanin (KLH).
Epitope:	C-Terminus
Reactivity:	Human, Mouse, Rat
Purification:	Delipidated and defibrinated
Presentation:	0.01% sodium azide.
Recommended Storage:	+4°C or -20°C, Avoid repeated freezing and thawing.
Usage Summary:	Immunohistochemistry: LS-B715 was validated for use in immunohistochemistry on a panel of 21 formalin-fixed, paraffin-embedded (FFPE) human tissues after heat induced antigen retrieval in pH 6.0 citrate buffer. After incubation with the primary antibody, slides were incubated with biotinylated secondary antibody, followed by alkaline phosphatase-streptavidin and chromogen. The stained slides were evaluated by a pathologist to confirm staining specificity. The optimal working concentration for LS-B715 was determined to be 1:500.
Uses:	IHC - Paraffin (1:500), Immunofluorescence, Western blot, Immunoprecipitation, ELISA (Optimal dilution to be determined by the researcher)
Size:	50 µl

Immunohistochemistry Image:



Anti-IKBKB / IKK Beta antibody IHC of human placenta. Immunohistochemistry of formalin-fixed, paraffin-embedded tissue after heat-induced antigen retrieval. Antibody LS-B715 dilution 1:500.

Western Blot Image:



Anti-IKKbeta Antibody - Western Blot. Western blot of anti-IKKbeta antibody reacted with HeLa cell extract. All incubations except color development were performed using TBS supplemented with 0.1% Tween-20 at room temperature. The membrane was blocked in 5% dry milk for 2 h. After washing, a 1:500 dilution of the primary antibody was added to the membrane and incubated for 2 h. Washes with buffer were performed 4 times for 5 each. The western blot was incubated with secondary antibody (HRP Goat-a-Rabbit IgG [H&L]) diluted 1:2000 for 1h. Washes with TBS preceded color development.

Western Blot Image:



Immunoblot of anti-IKKb antibody reacted with HeLa cell extract. A :1:500 dilution of the primary antibody was used.

Requested From:

Japan

Laboratory Reagent For In Vitro Research Use Only

Not for resale without prior written consent from LifeSpan BioSciences, Inc.

Created on 9/24/2014

© 2014 LifeSpan BioSciences