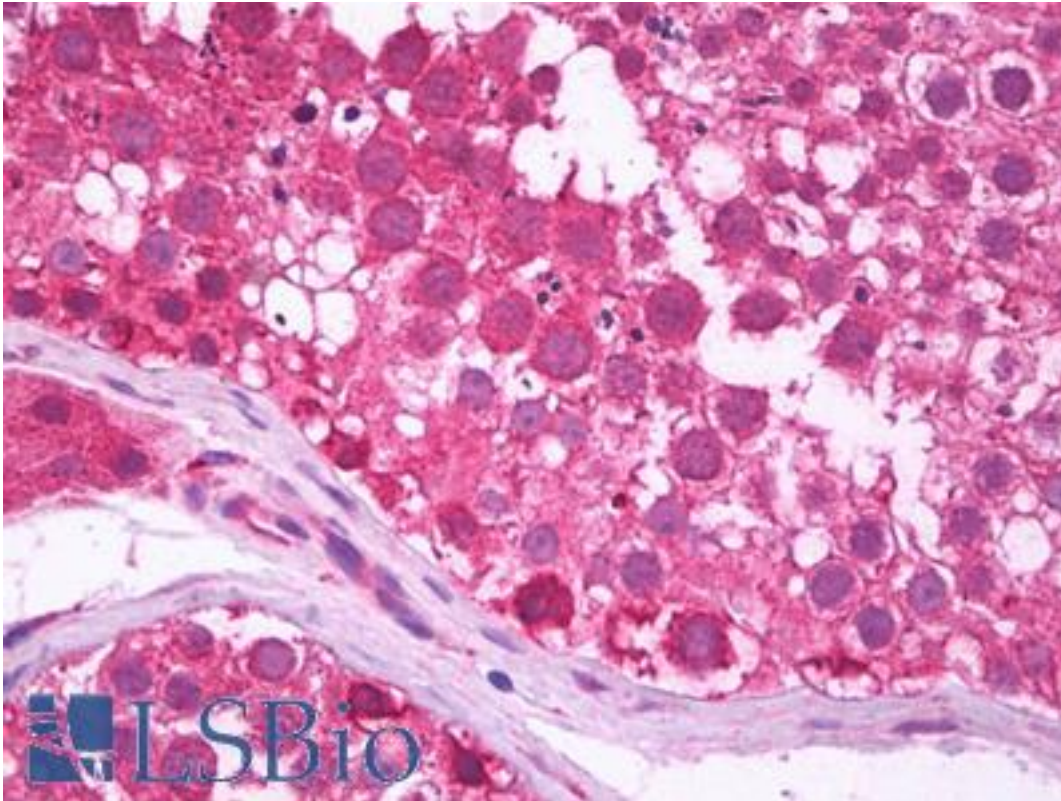


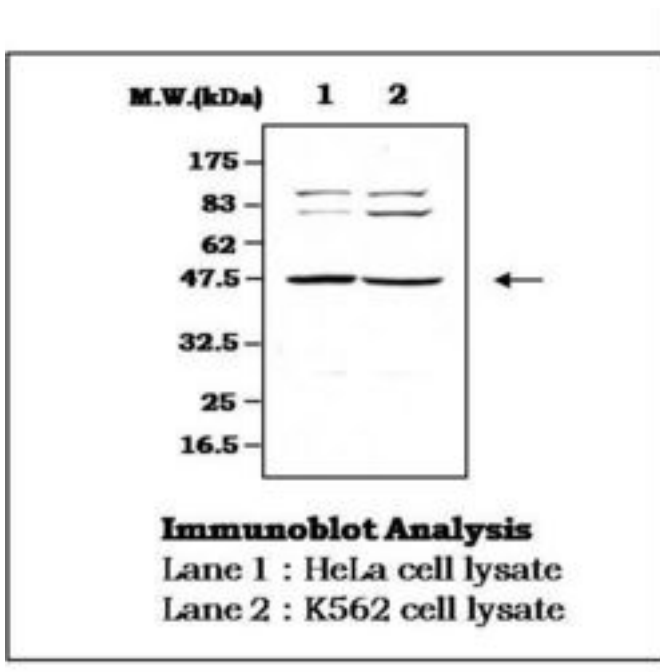
NCK1 / NCK Rabbit anti-Human Polyclonal Antibody - LS-B7146 - LSBio	
CatalogID:	LS-B7146
Validation:	This antibody replaces catalog number LS-C62235. It has been validated for use in the following assays: IHC-P.
Target:	NCK adaptor protein 1 (NCK1)
Synonyms:	NCK1 Antibody, Cytoplasmic protein nck Antibody, Cytoplasmic protein NCK1 Antibody, NCK adaptor protein 1 Antibody, Nck-1 Antibody, NCKalpha Antibody, Melanoma NCK protein Antibody, NCK Antibody, NCK tyrosine kinase Antibody
Host	NCK1 antibody was produced in Rabbit
Clonality:	Polyclonal
Isotype:	IgG
Immunogen Species:	NCK1 / NCK antibody was raised against Human
Antigen Type:	Synthetic peptide
Immunogen:	NCK1 / NCK antibody was raised against synthetic peptide from human NCK1.
Reactivity:	Human, Mouse
Purification:	Affinity purified
Presentation:	HEPES with 0.15M NaCl, 0.01% BSA, 0.03% sodium azide, and 50% glycerol
Recommended Storage:	Short term 4°C, long term aliquot and store at -20°C, avoid freeze thaw cycles.
Uses:	IHC - Paraffin (1:200), Western blot (1:2000) (Optimal dilution to be determined by the researcher)
Size:	50 µl

Immunohistochemistry Image:



Anti-NCK1 antibody IHC of human testis. Immunohistochemistry of formalin-fixed, paraffin-embedded tissue after heat-induced antigen retrieval. Antibody LS-B7146 dilution 1:200.

Western Blot Image:



Requested From:

Japan

Laboratory Reagent For In Vitro Research Use Only

Not for resale without prior written consent from LifeSpan BioSciences, Inc.

Created on 9/24/2014

© 2014 LifeSpan BioSciences