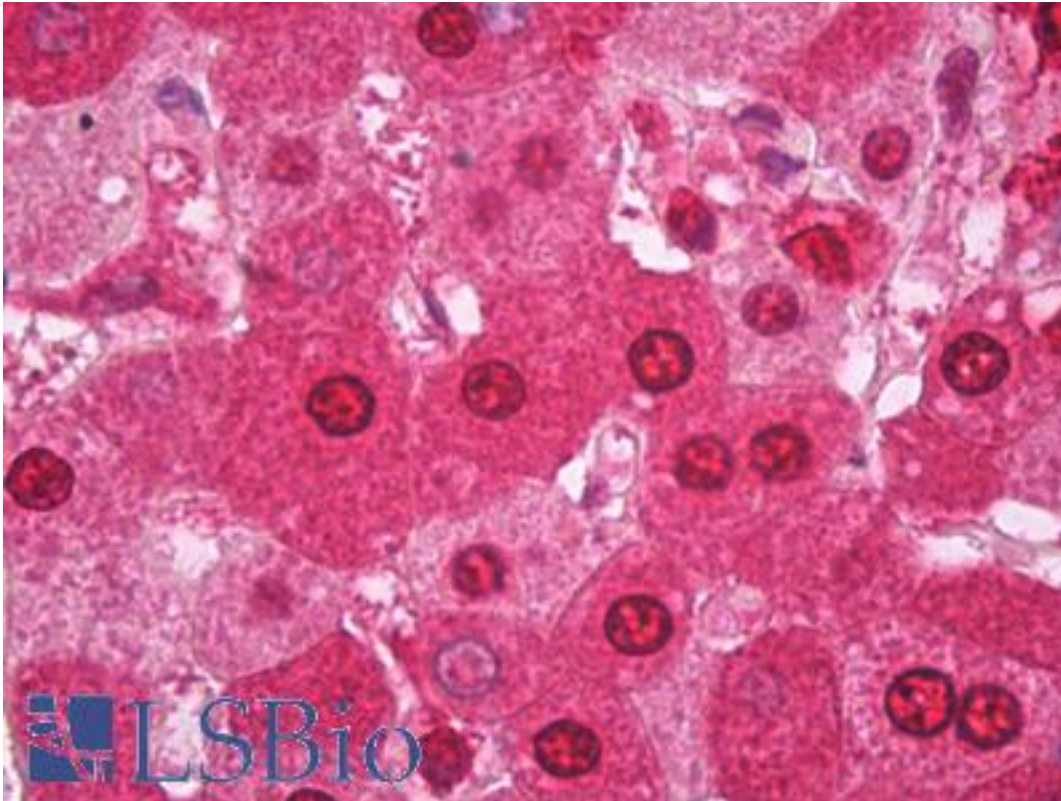


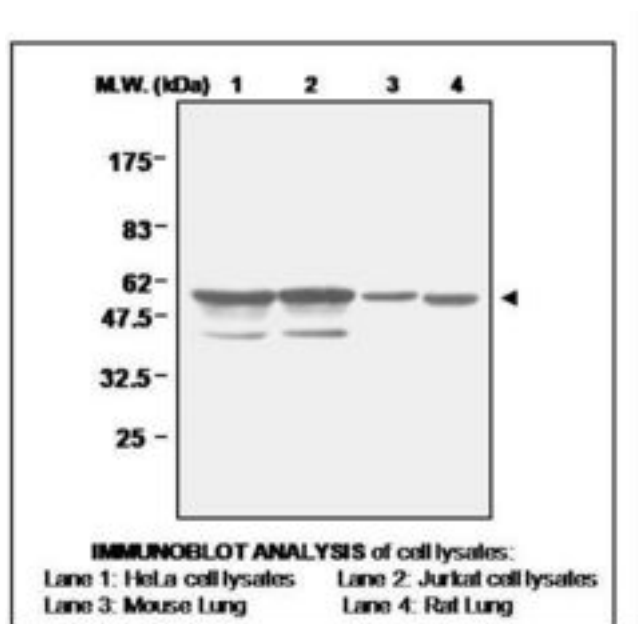
GSR / Glutathione Reductase Rabbit anti-Human Polyclonal Antibody - LS-B7144 - LSBio	
CatalogID:	LS-B7144
Validation:	This antibody replaces catalog number LS-C62220. It has been validated for use in the following assays: IHC-P.
Target:	glutathione reductase (GSR)
Synonyms:	GSR Antibody, GR Antibody, GLUR Antibody, GRase Antibody, Glutathione reductase Antibody, GRD1 Antibody
Host	GSR antibody was produced in Rabbit
Clonality:	Polyclonal
Isotype:	IgG
Immunogen Species:	GSR / Glutathione Reductase antibody was raised against Human
Immunogen:	GSR / Glutathione Reductase antibody was raised against recombinant human GSR purified from E. coli.
Reactivity:	Human, Mouse, Rat
Purification:	Purified
Presentation:	HEPES with 0.15M NaCl, 0.01% BSA, 0.03% sodium azide, and 50% glycerol
Recommended Storage:	Short term 4°C, long term aliquot and store at -20°C, avoid freeze thaw cycles.
Uses:	IHC - Paraffin (1:400), Western blot (1:2000) (Optimal dilution to be determined by the researcher)
Size:	50 µl
Concentration:	1 mg/ml

Immunohistochemistry Image:



Anti-Glutathione Reductase antibody IHC of human liver. Immunohistochemistry of formalin-fixed, paraffin-embedded tissue after heat-induced antigen retrieval. Antibody LS-B7144 dilution 1:400.

Western Blot Image:



Requested From:

Japan

Laboratory Reagent For In Vitro Research Use Only

Not for resale without prior written consent from LifeSpan BioSciences, Inc.

Created on 9/24/2014

© 2014 LifeSpan BioSciences