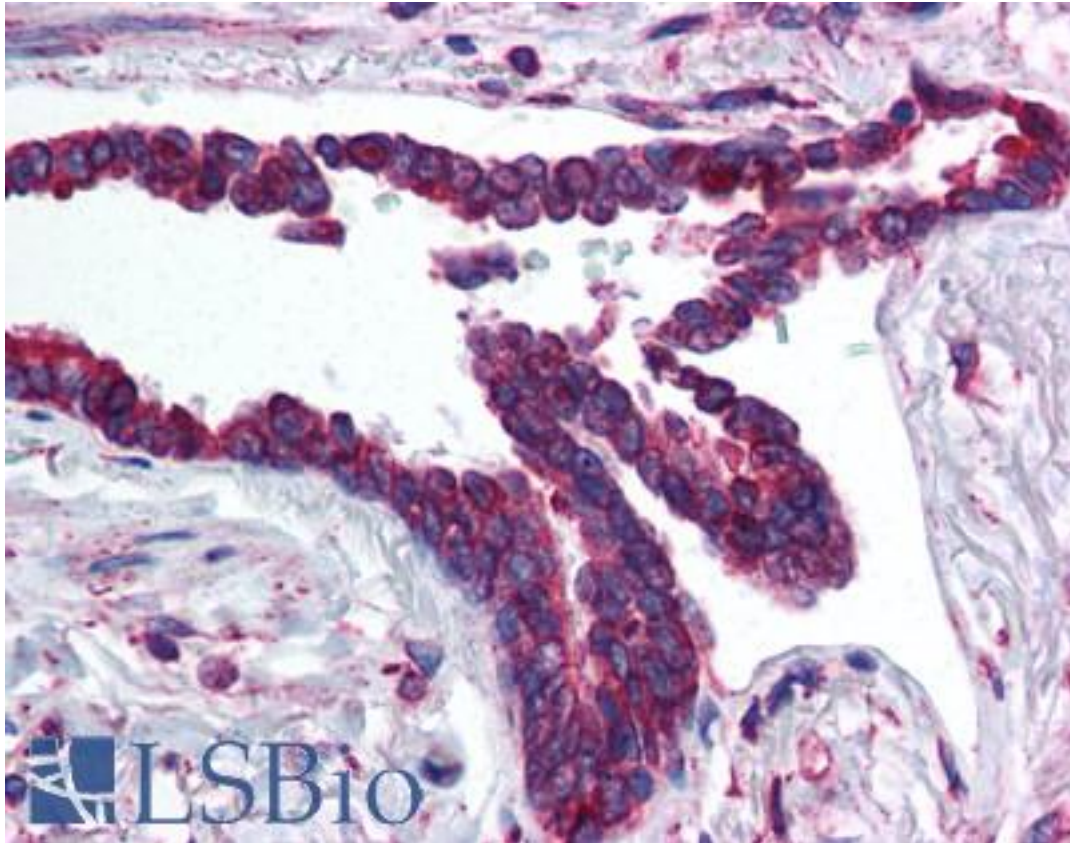


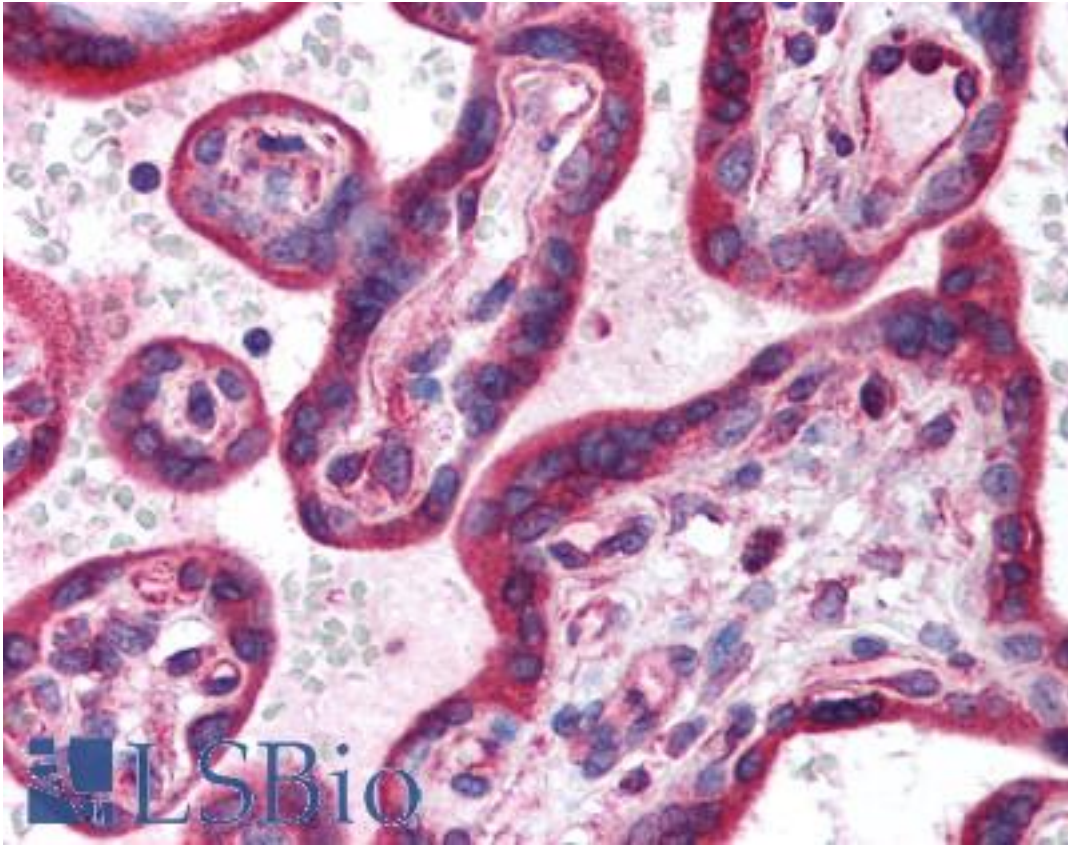
HIF3A / HIF3-Alpha Rabbit anti-Mouse Polyclonal (aa581-592) Antibody - LS-B714 - LSBio	
<b>CatalogID:</b>	LS-B714
<b>Validation:</b>	This antibody replaces catalog number LS-C18990. It has been validated for use in the following assays: IHC.
<b>Target:</b>	hypoxia inducible factor 3, alpha subunit (HIF3A)
<b>Synonyms:</b>	HIF3A Antibody, BHLHe17 Antibody, HIF-3A Antibody, IPAS Antibody, HIF3-alpha-1 Antibody, Inhibitory PAS domain protein Antibody, PASD7 Antibody, HIF-3-alpha Antibody, HIF3-alpha Antibody, Member of PAS protein 7 Antibody, MOP7 Antibody
<b>Host</b>	HIF3A antibody was produced in Rabbit
<b>Clonality:</b>	Polyclonal
<b>Immunogen Species:</b>	HIF3A / HIF3-Alpha antibody was raised against Mouse
<b>Antigen Type:</b>	Synthetic peptide
<b>Immunogen:</b>	HIF3A / HIF3-Alpha antibody was raised against synthetic peptide from mouse HIF3A.
<b>Specificity:</b>	aa 581-592 of mouse Hif3 a (Hypoxia Inducible Factor).
<b>Epitope:</b>	aa581-592
<b>Reactivity:</b>	Mouse, Human
<b>Purification:</b>	Immunoaffinity purified
<b>Presentation:</b>	0.02 M potassium phosphate, 0.15 M sodium chloride, pH 7.2, 0.01% sodium azide.
<b>Recommended Storage:</b>	Long term: -20°C; Short term: +4°C. Avoid repeat freeze-thaw cycles.
<b>Usage Summary:</b>	Immunohistochemistry: LS-B714 was validated for use in immunohistochemistry on a panel of 21 formalin-fixed, paraffin-embedded (FFPE) human tissues after heat induced antigen retrieval in pH 6.0 citrate buffer. After incubation with the primary antibody, slides were incubated with biotinylated secondary antibody, followed by alkaline phosphatase-streptavidin and chromogen. The stained slides were evaluated by a pathologist to confirm staining specificity. The optimal working concentration for LS-B714 was determined to be 5 ug/ml.***Does not work to detect human protein in Western blot.***
<b>Uses:</b>	IHC - Paraffin (5 µg/ml), Immunofluorescence, Western blot (1:100 - 1:8000), ELISA (1:14000 - 1:80000) (Optimal dilution to be determined by the researcher)
<b>Size:</b>	50 µg
<b>Concentration:</b>	1 mg/ml

**Immunohistochemistry Image:**



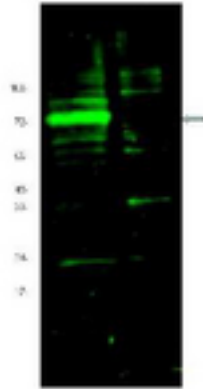
Anti-HIF3A antibody IHC of human lung, respiratory epithelium. Immunohistochemistry of formalin-fixed, paraffin-embedded tissue after heat-induced antigen retrieval. Antibody LS-B714 concentration 5 ug/ml.

**Immunohistochemistry Image:**



Anti-HIF3A antibody IHC of human placenta. Immunohistochemistry of formalin-fixed, paraffin-embedded tissue after heat-induced antigen retrieval. Antibody LS-B714 concentration 5 ug/ml.

**Western Blot Image:**



Anti-Hif Antibody - Western Blot. Western blot of Affinity Purified anti-Hif antibody shows detection of a band ~72 kD corresponding to mouse Hif3a (arrowhead). Approximately 10 ug of a CoCl<sub>2</sub> treated 3T3 cell lysate (lane 1) and control 3T3 cell lysate (lane 2) were separated by 4-20% SDS-PAGE and transferred onto nitrocellulose. Treatment of exponentially growing 3T3 cells with 130 uM CoCl<sub>2</sub> for 6 h at 37° C effectively mimics hypoxia. After blocking the membrane was probed overnight at 4C with the primary antibody diluted to 1:1600. The membrane was washed and reacted with a 1:10000 dilution of IRDye800 conjugated Gt-a-Rabbit IgG [H&L] MX ( for 45 min at room temperature. IRDye800 fluorescence image was captured using the Odyssey Infrared Imaging System developed by LI-COR. IRDye is a trademark of LI-COR, Inc. Other detection systems will yield similar results.

**Requested From:**

Japan

Laboratory Reagent For In Vitro Research Use Only

Not for resale without prior written consent from LifeSpan BioSciences, Inc.

Created on 9/24/2014

© 2014 LifeSpan BioSciences