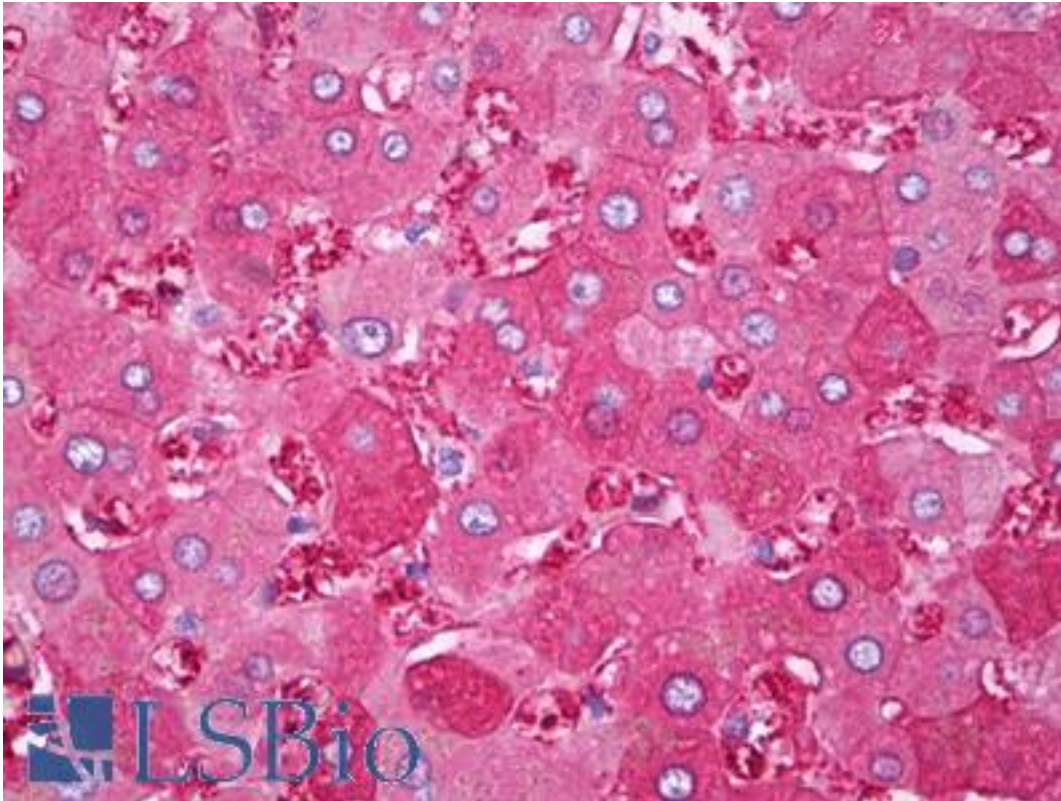


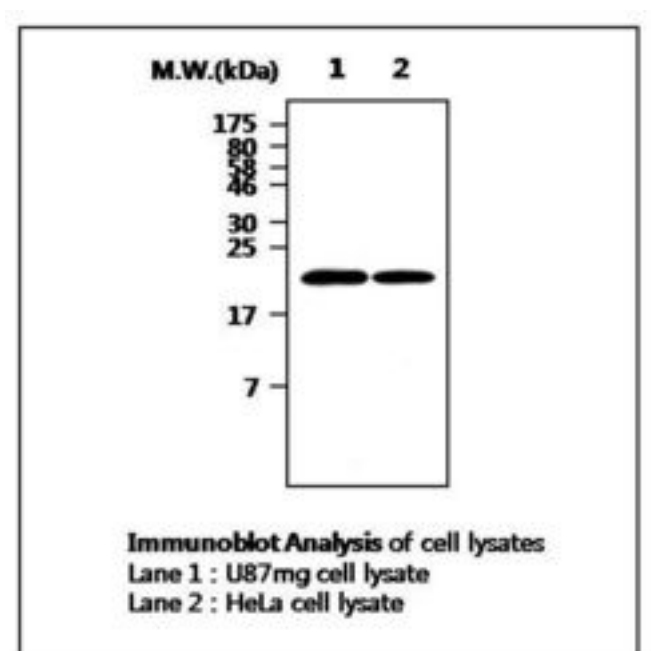
Ferritin Heavy Chain / FTH1 Mouse anti-Human Monoclonal (3F8) Antibody - LS-B7139 - LSBio	
CatalogID:	LS-B7139
Validation:	This antibody replaces catalog number LS-C62146. It has been validated for use in the following assays: IHC-P.
Target:	ferritin, heavy polypeptide 1 (FTH1)
Synonyms:	FTH1 Antibody, Apoferritin Antibody, Ferritin H subunit Antibody, Ferritin heavy chain Antibody, Ferritin, heavy polypeptide 1 Antibody, FHC Antibody, FTHL6 Antibody, PIG15 Antibody, PLIF Antibody, FTH Antibody
Host	FTH1 antibody was produced in Mouse
Clonality:	Monoclonal
Isotype:	IgG2a,k
Clone Name:	3F8
Immunogen Species:	Ferritin Heavy Chain / FTH1 antibody was raised against Human
Immunogen:	Ferritin Heavy Chain / FTH1 antibody was raised against recombinant human protein purified from E. coli (HIS-Ferritin H chain).
Reactivity:	Human
Purification:	Ammonium sulfate precipitation
Presentation:	HEPES with 0.15M NaCl, 0.01% BSA, 0.03% sodium azide, and 50% glycerol. Sourced in Ascites.
Recommended Storage:	Short term 4°C, long term aliquot and store at -20°C, avoid freeze thaw cycles.
Uses:	IHC - Paraffin (1:200), Western blot (1:1000), ELISA (Optimal dilution to be determined by the researcher)
Size:	50 µl

Immunohistochemistry Image:



Anti-FTH1 antibody IHC of human liver. Immunohistochemistry of formalin-fixed, paraffin-embedded tissue after heat-induced antigen retrieval. Antibody LS-B7139 dilution 1:200.

Western Blot Image:



Requested From:

Japan

Laboratory Reagent For In Vitro Research Use Only

Not for resale without prior written consent from LifeSpan BioSciences, Inc.

Created on 9/24/2014

© 2014 LifeSpan BioSciences