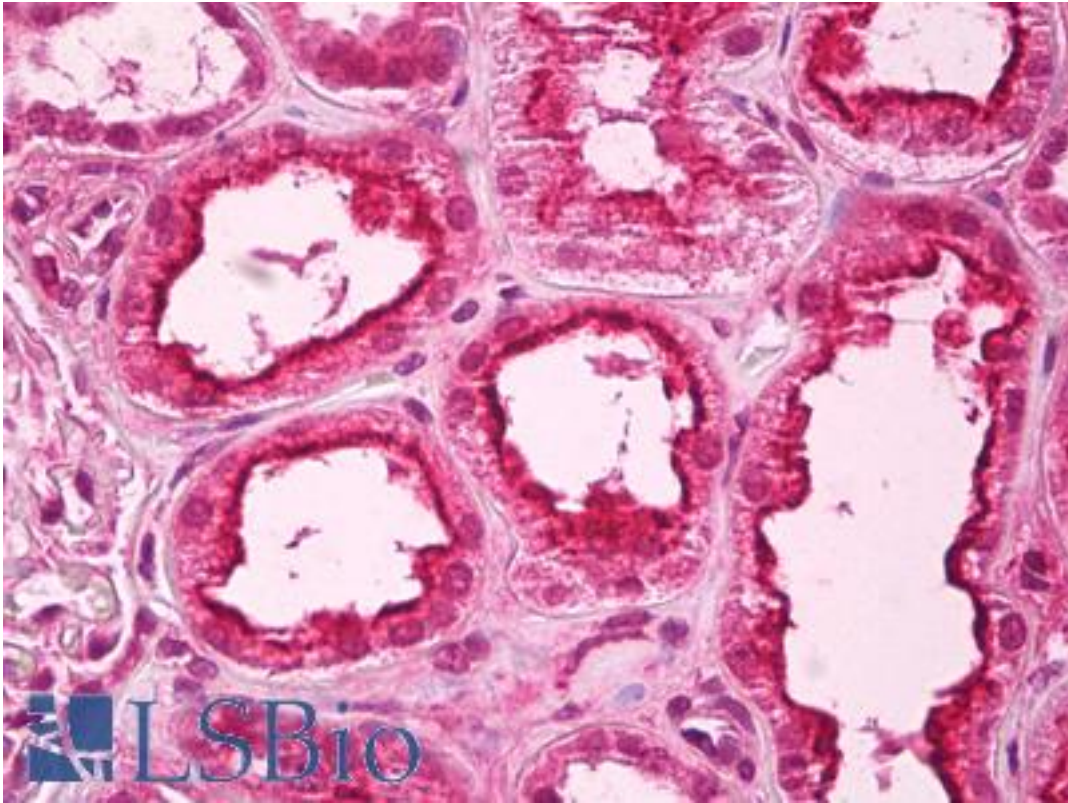


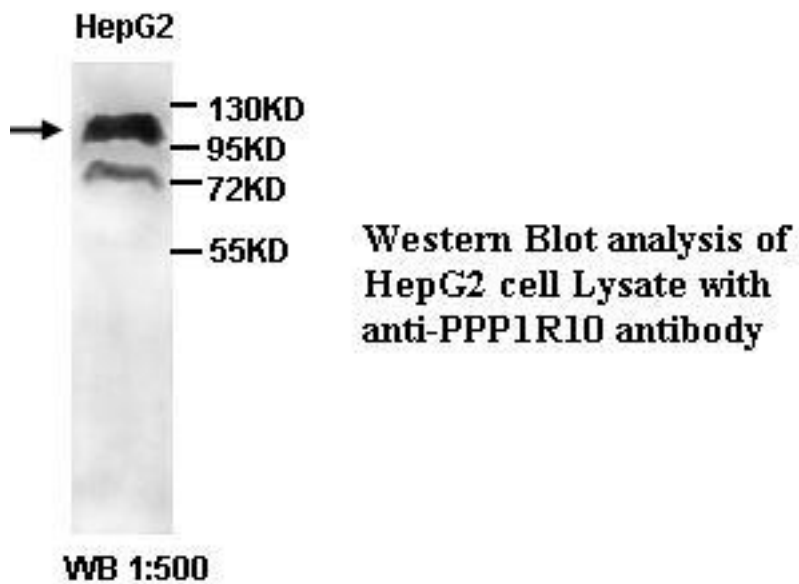
PPP1R10 / PNUTS Rabbit anti-Human Polyclonal Antibody - LS-B7130 - LSBio	
CatalogID:	LS-B7130
Validation:	This antibody replaces catalog number LS-C137237. It has been validated for use in the following assays: IHC-P.
Target:	protein phosphatase 1, regulatory subunit 10 (PPP1R10)
Synonyms:	PPP1R10 Antibody, CAT53 Antibody, FB19 Antibody, HLA-C associated transcript 53 Antibody, p99 Antibody, PNUTS Antibody, PP1-binding protein of 114 kDa Antibody, PP1R10 Antibody, R111 Antibody, Protein FB19 Antibody
Host	PPP1R10 antibody was produced in Rabbit
Clonality:	Polyclonal
Isotype:	IgG
Immunogen Species:	PPP1R10 / PNUTS antibody was raised against Human
Immunogen:	PPP1R10 / PNUTS antibody was raised against recombinant protein corresponding to aa 661-929 of PPP1R10
Reactivity:	Human, Rat
Purification:	Affinity purified
Presentation:	PBS, pH 7.4, 0.02% sodium azide
Recommended Storage:	Short term 4°C, long term aliquot and store at -20°C, avoid freeze thaw cycles.
Uses:	IHC - Paraffin (5 µg/ml), Western blot (Optimal dilution to be determined by the researcher)
Size:	50 µl
Concentration:	1 mg/ml

Immunohistochemistry Image:



Anti-PPP1R10 antibody IHC of human kidney. Immunohistochemistry of formalin-fixed, paraffin-embedded tissue after heat-induced antigen retrieval. Antibody LS-B7130 concentration 5 ug/ml.

Western Blot Image:



Laboratory Reagent For In Vitro Research Use Only

Not for resale without prior written consent from LifeSpan BioSciences, Inc.

Created on 9/24/2014

© 2014 LifeSpan BioSciences