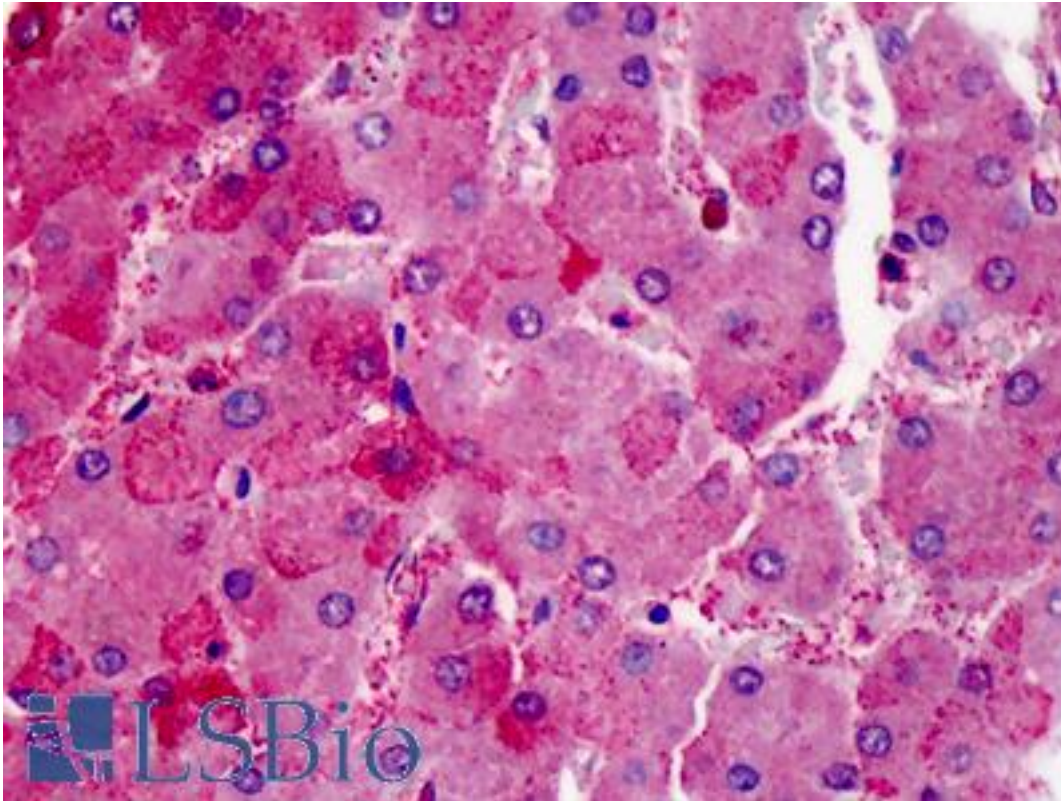


MAP4K4 / NIK Rabbit anti-Human Polyclonal (aa931-947) Antibody - LS-B712 - LSBio	
<b>CatalogID:</b>	LS-B712
<b>Validation:</b>	This antibody replaces catalog number LS-C26876. It has been validated for use in the following assays: IHC.
<b>Target:</b>	mitogen-activated protein kinase kinase kinase kinase 4 (MAP4K4)
<b>Synonyms:</b>	MAP4K4 Antibody, HGK Antibody, HPK/GCK-like kinase HGK Antibody, KIAA0687 Antibody, Misshapen Antibody, NIK Antibody, Nck-interacting kinase Antibody, HPK/GCK-like kinase Antibody, Ste20 group protein kinase HGK Antibody, MEKKK 4 Antibody, MEKKK4 Antibody, Zc1 Antibody, FLH21957 Antibody, MEK kinase kinase 4 Antibody
<b>Family / Subfamily:</b>	Protein Kinase / MSN
<b>Host</b>	MAP4K4 antibody was produced in Rabbit
<b>Clonality:</b>	Polyclonal
<b>Immunogen Species:</b>	MAP4K4 / NIK antibody was raised against Human
<b>Immunogen:</b>	MAP4K4 / NIK antibody was raised against peptide corresponding to amino acids 931 to 947 of human NIK.
<b>Epitope:</b>	aa931-947
<b>Reactivity:</b>	Human
<b>Purification:</b>	Purified
<b>Presentation:</b>	PBS, 0.02% sodium azide.
<b>Recommended Storage:</b>	+4°C or -20°C, Avoid repeated freezing and thawing.
<b>Usage Summary:</b>	Immunohistochemistry: LS-B712 was validated for use in immunohistochemistry on a panel of 21 formalin-fixed, paraffin-embedded (FFPE) human tissues after heat induced antigen retrieval in pH 6.0 citrate buffer. After incubation with the primary antibody, slides were incubated with biotinylated secondary antibody, followed by alkaline phosphatase-streptavidin and chromogen. The stained slides were evaluated by a pathologist to confirm staining specificity. The optimal working concentration for LS-B712 was determined to be 20 ug/ml.
<b>Uses:</b>	IHC - Paraffin (20 µg/ml), Western blot (Optimal dilution to be determined by the researcher)
<b>Size:</b>	50 µg
<b>Concentration:</b>	0.5 mg/ml

**Immunohistochemistry Image:**



Anti-MAP4K4 antibody IHC of human liver. Immunohistochemistry of formalin-fixed, paraffin-embedded tissue after heat-induced antigen retrieval. Antibody LS-B712 concentration 20 ug/ml.

**Requested From:**

Japan

Laboratory Reagent For In Vitro Research Use Only

Not for resale without prior written consent from LifeSpan BioSciences, Inc.

Created on 9/24/2014

© 2014 LifeSpan BioSciences