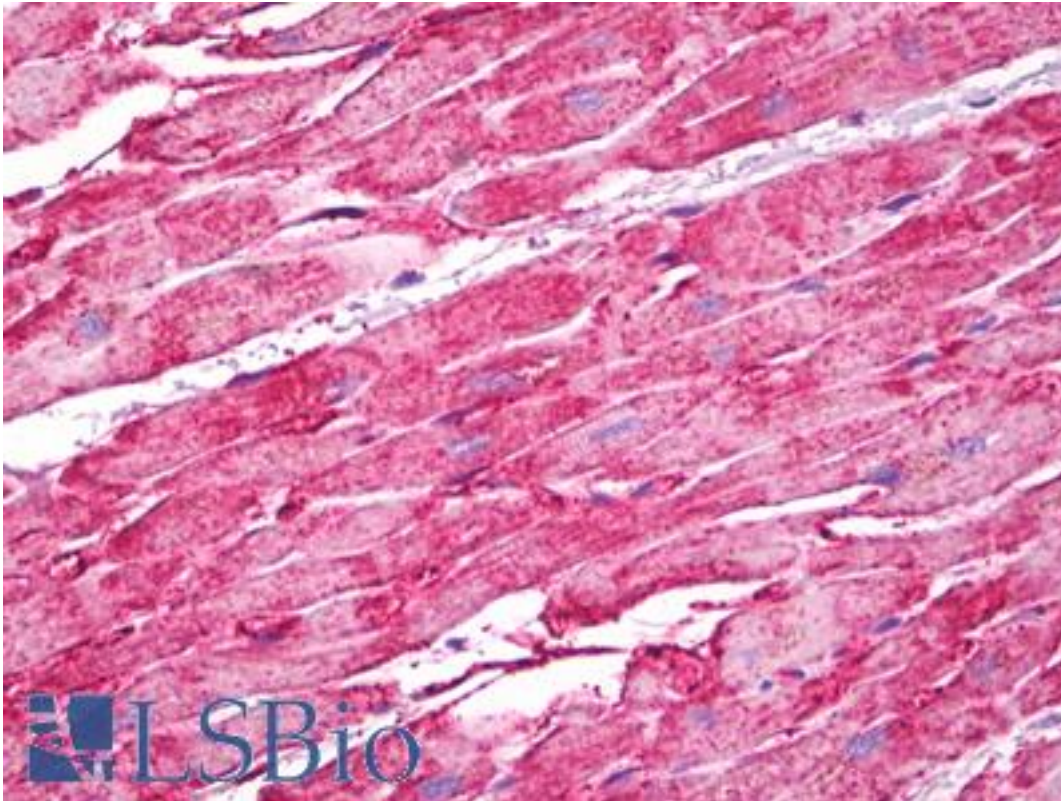


CDH13 / Cadherin 13 Rabbit anti-Human Polyclonal (N-Terminus) Antibody - LS-B7119 - LSBio	
CatalogID:	LS-B7119
Validation:	This antibody replaces catalog number LS-C35236. It has been validated for use in the following assays: IHC-P.
Target:	cadherin 13 (CDH13)
Synonyms:	CDH13 Antibody, Cadherin-13 Antibody, CDHH Antibody, Cdht Antibody, Heart cadherin Antibody, H-cadherin Antibody, T-cad Antibody, T-cadherin Antibody, Truncated cadherin Antibody, p105 Antibody
Family / Subfamily:	Cadherin / not assigned-Cadherin
Host	CDH13 antibody was produced in Rabbit
Clonality:	Polyclonal
Isotype:	IgG
Immunogen Species:	CDH13 / Cadherin 13 antibody was raised against Human
Antigen Type:	Synthetic peptide
Immunogen:	CDH13 / Cadherin 13 antibody was raised against synthetic peptide corresponding to 15 amino acids near the amino terminus of human T-cadherin (Genbank accession No. NM_001248).
Specificity:	Reacts with human and mouse T-cadherin.
Epitope:	N-Terminus
Reactivity:	Human, Mouse
Purification:	Immunoaffinity purified
Presentation:	PBS, 0.02% sodium azide.
Recommended Storage:	Short term 4°C, long term aliquot and store at -20°C, avoid freeze thaw cycles. Store undiluted.
Usage Summary:	Suitable for use in Western Blot and Immunofluorescence. Western Blot: 0.5-1 ug/ml. Immunofluorescence: 20 ug/ml. Positive control: 3T3 cell lysate.
Uses:	IHC - Paraffin (5 µg/ml), Immunofluorescence (20 µg/ml), Western blot (0.5 - 1 µg/ml) (Optimal dilution to be determined by the researcher)
Size:	50 µg
Concentration:	1 mg/ml

Immunohistochemistry Image:



Anti-H Cadherin antibody IHC of human heart. Immunohistochemistry of formalin-fixed, paraffin-embedded tissue after heat-induced antigen retrieval. Antibody LS-B7119 concentration 5 ug/ml.

Requested From:

Japan

Laboratory Reagent For In Vitro Research Use Only

Not for resale without prior written consent from LifeSpan BioSciences, Inc.

Created on 9/24/2014

© 2014 LifeSpan BioSciences