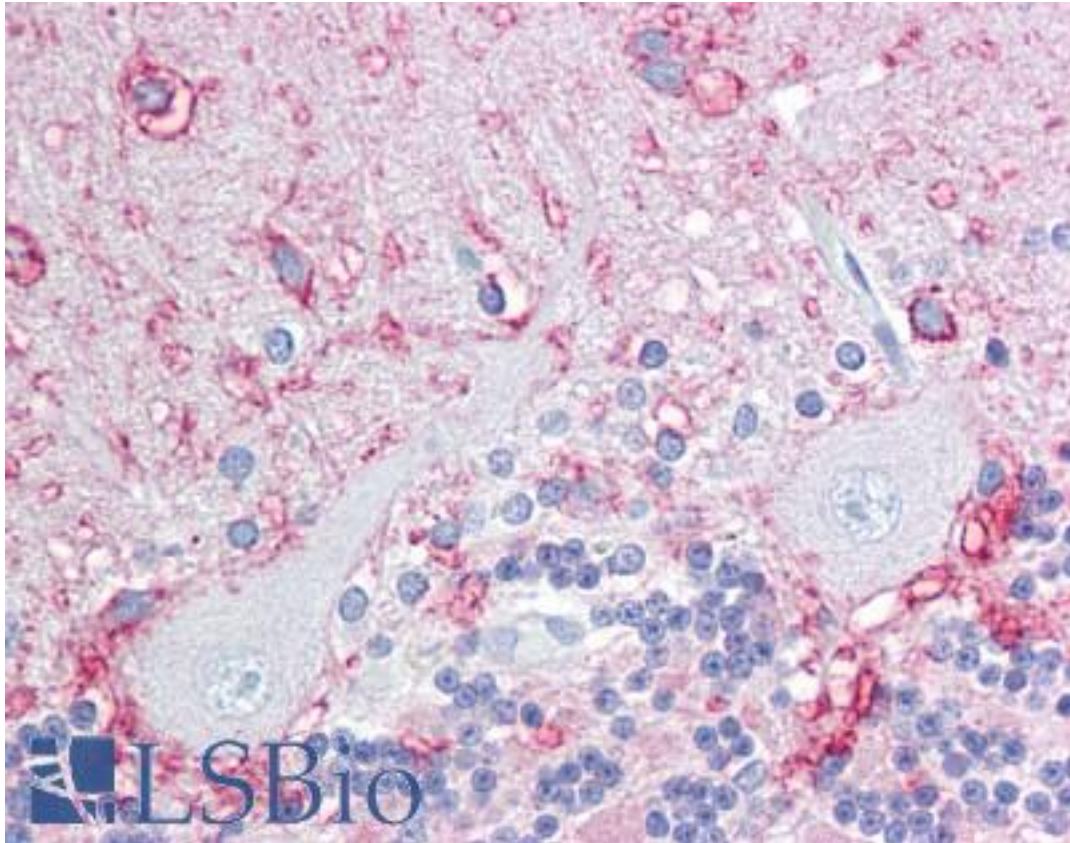


KAL1 / Anosmin Rabbit anti-Human Polyclonal (Internal) Antibody - LS-B7108 - LSBio

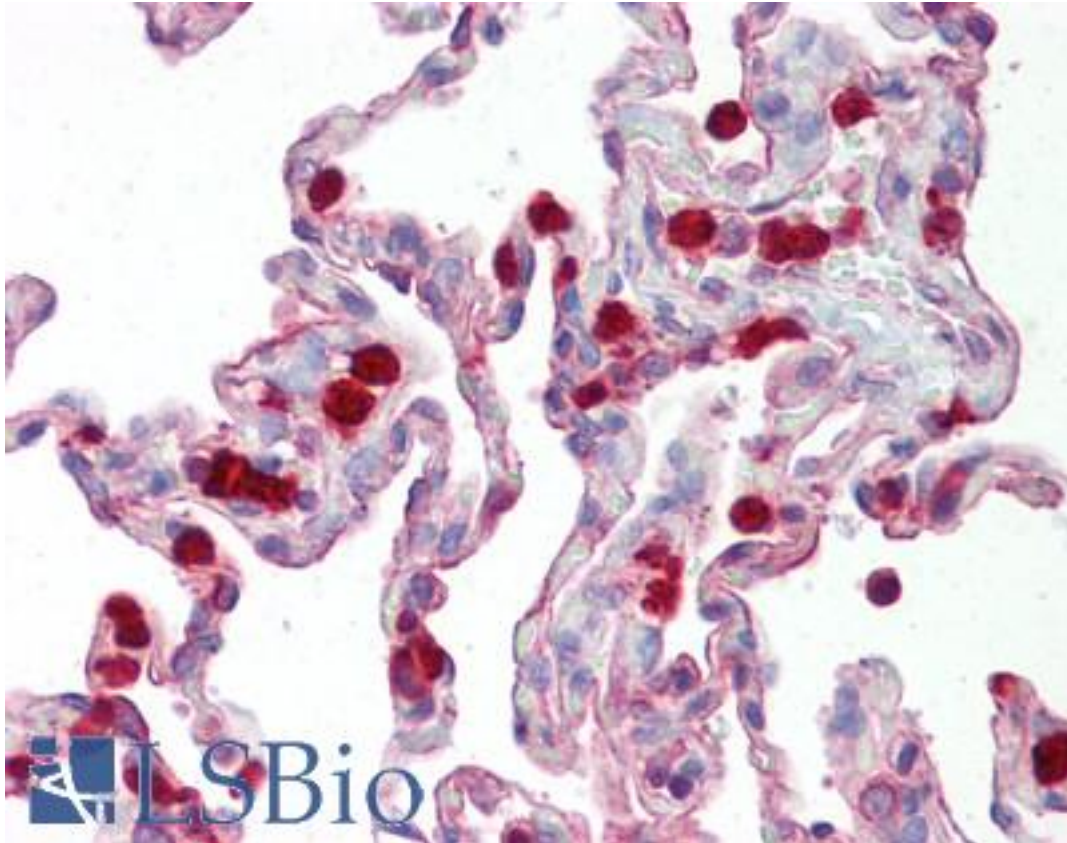
| | |
|-----------------------------|---|
| CatalogID: | LS-B7108 |
| Validation: | This antibody replaces catalog number LS-C144377. It has been validated for use in the following assays: IHC-P. |
| Target: | Kallmann syndrome 1 sequence (KAL1) |
| Synonyms: | KAL1 Antibody, ADMLX Antibody, Anosmin-1 Antibody, HH1 Antibody, KAL Antibody, KALIG1 Antibody, KMS Antibody, HHA Antibody, Kallmann syndrome 1 sequence Antibody, Kallmann syndrome protein Antibody, KALIG-1 Antibody |
| Host | KAL1 antibody was produced in Rabbit |
| Clonality: | Polyclonal |
| Immunogen Species: | KAL1 / Anosmin antibody was raised against Human |
| Antigen Type: | Synthetic peptide |
| Immunogen: | KAL1 / Anosmin antibody was raised against an 18 amino acid peptide near the center of human Anosmin |
| Specificity: | Human KAL1 / Anosmin. |
| Epitope: | Internal |
| Reactivity: | Human |
| Purification: | Immunoaffinity purified |
| Presentation: | PBS, 0.02% sodium azide |
| Recommended Storage: | Short term 4°C, long term aliquot and store at -20°C, avoid freeze thaw cycles. Store undiluted. |
| Uses: | IHC - Paraffin (5 µg/ml), Western blot (1 - 2 µg/ml) (Optimal dilution to be determined by the researcher) |
| Size: | 50 µg |
| Concentration: | 1 mg/ml |

Immunohistochemistry Image:



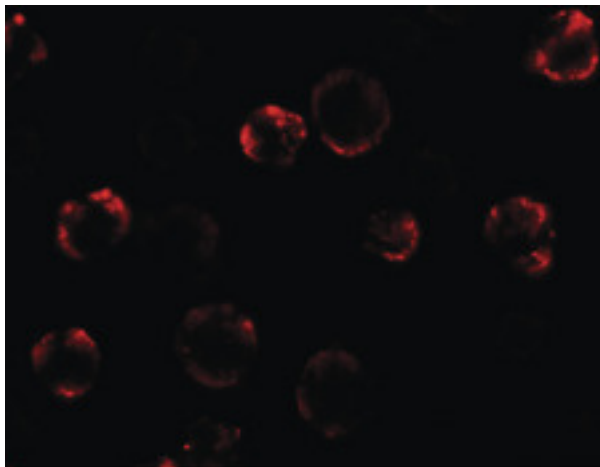
Anti-KAL1 / Anosmin antibody IHC of human brain, cerebellum. Immunohistochemistry of formalin-fixed, paraffin-embedded tissue after heat-induced antigen retrieval. Antibody LS-B7108 concentration 5 ug/ml.

Immunohistochemistry Image:



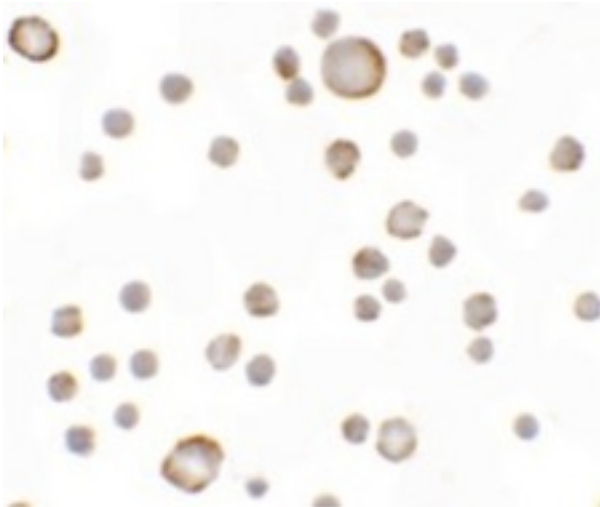
Anti-KAL1 / Anosmin antibody IHC of human lung. Immunohistochemistry of formalin-fixed, paraffin-embedded tissue after heat-induced antigen retrieval. Antibody LS-B7108 concentration 5 ug/ml.

Immunofluorescence Image:



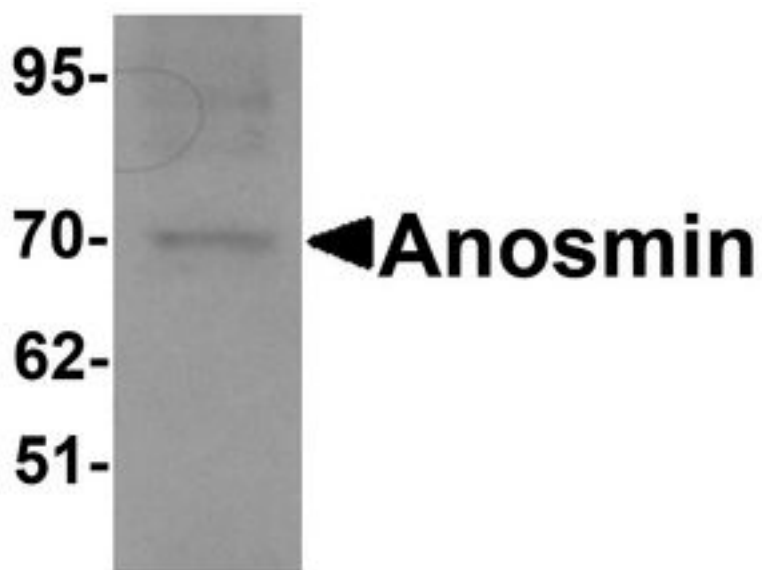
Immunofluorescence of Anosmin in MCF7 cells with Anosmin antibody at 20 ug/ml.

Immunocytochemistry Image:



Immunocytochemistry of Anosmin in MCF7 cells with Anosmin antibody at 5 ug/ml.

Western Blot Image:



Western blot analysis of Anosmin in MCF7 cell lysate with Anosmin antibody at 1 ug/ml.

Requested From:

Japan

Laboratory Reagent For In Vitro Research Use Only

Not for resale without prior written consent from LifeSpan BioSciences, Inc.

Created on 9/24/2014

© 2014 LifeSpan BioSciences