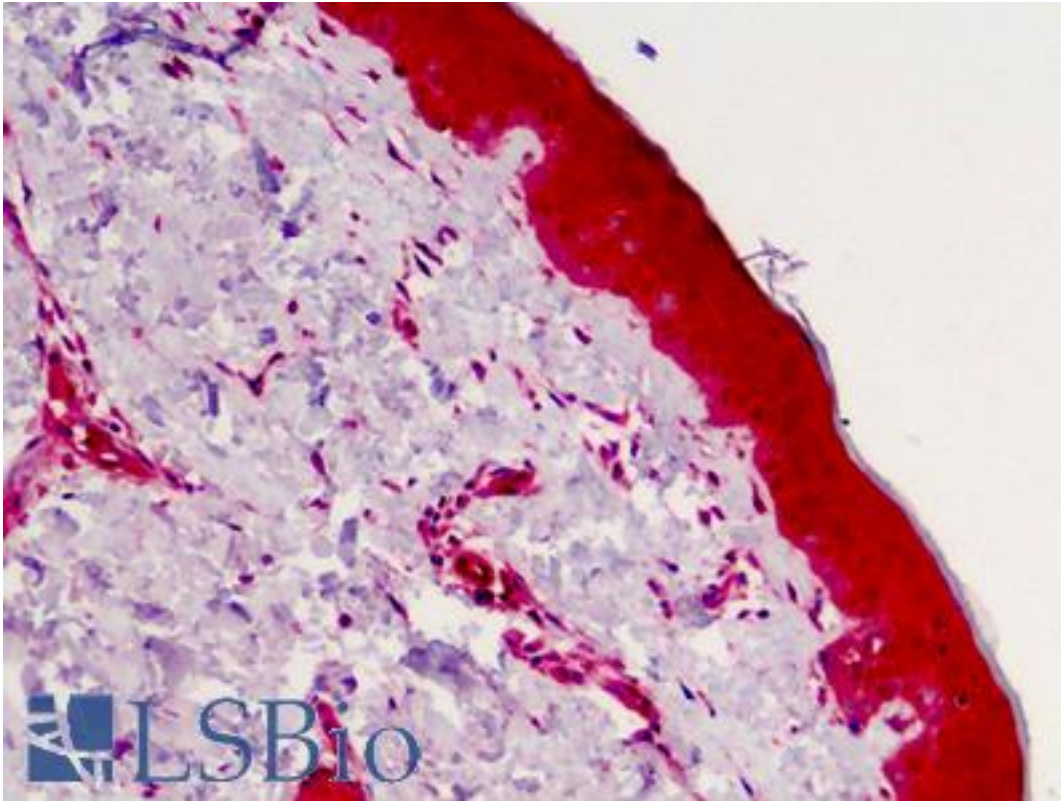


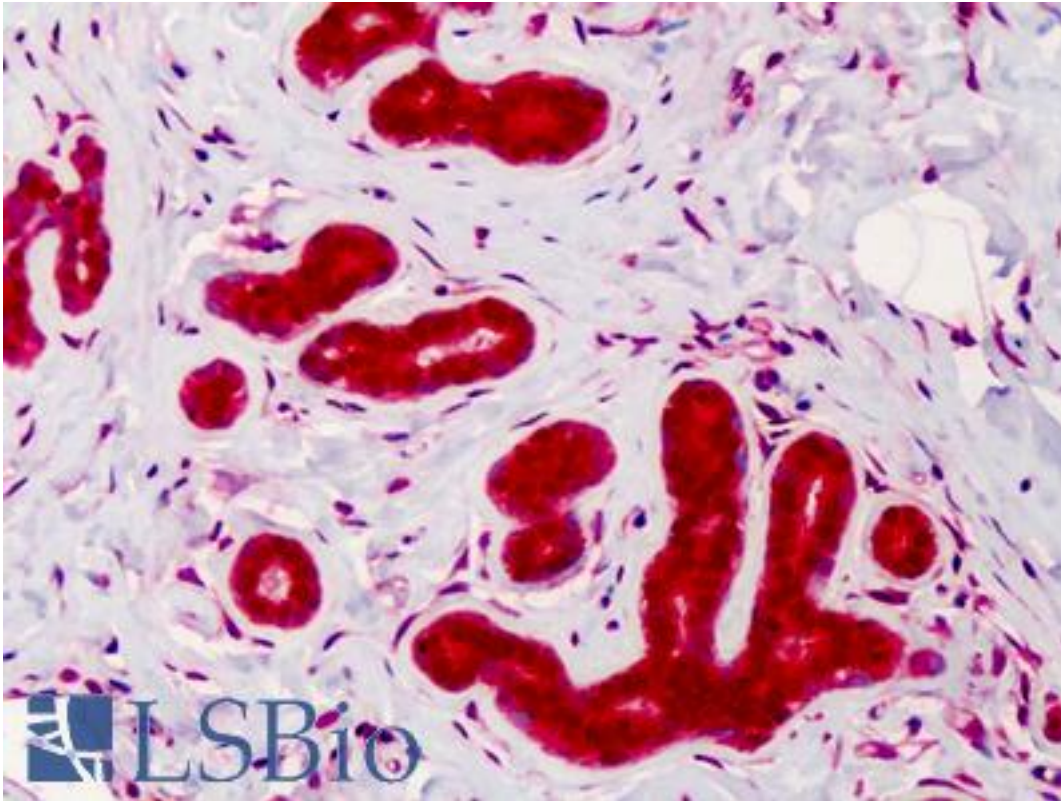
CASP4 / Caspase 4 Rabbit anti-Human Polyclonal Antibody - LS-B710 - LSBio	
CatalogID:	LS-B710
Validation:	This antibody replaces catalog number LS-C26867. It has been validated for use in the following assays: IHC.
Target:	caspase 4, apoptosis-related cysteine peptidase (CASP4)
Synonyms:	CASP4 Antibody, CASP-4 Antibody, Casp11 Antibody, Caspase 4 Antibody, Caspase-4 Antibody, Cysteine protease icerel-ii Antibody, ICE(rel)-II Antibody, ICE(rel)II Antibody, ICH-2 Antibody, Ich-3 Antibody, ICH2 Antibody, Protease ICH-2 Antibody, TX Antibody, Tx protease Antibody, Caspase 11 Antibody, ICEREL-II Antibody, Mih1/TX Antibody, Protease TX Antibody
Family / Subfamily:	Protease / Cysteine C14
Host	CASP4 antibody was produced in Rabbit
Clonality:	Polyclonal
Immunogen Species:	CASP4 / Caspase 4 antibody was raised against Human
Antigen Type:	Synthetic peptide
Immunogen:	CASP4 / Caspase 4 antibody was raised against synthetic peptide from human CASP4 / Caspase 4.
Reactivity:	Human, Mouse
Purification:	Immunoaffinity purified
Presentation:	PBS, 0.02% sodium azide.
Recommended Storage:	Aliquot and store at -20°C. Minimize freezing and thawing.
Usage Summary:	Immunohistochemistry: LS-B710 was validated for use in immunohistochemistry on a panel of 21 formalin-fixed, paraffin-embedded (FFPE) human tissues after heat induced antigen retrieval in pH 6.0 citrate buffer. After incubation with the primary antibody, slides were incubated with biotinylated secondary antibody, followed by alkaline phosphatase-streptavidin and chromogen. The stained slides were evaluated by a pathologist to confirm staining specificity. The optimal working concentration for LS-B710 was determined to be 5 ug/ml.
Uses:	IHC - Paraffin (5 µg/ml), Western blot (Optimal dilution to be determined by the researcher)
Size:	50 µg
Concentration:	1 mg/ml

Immunohistochemistry Image:



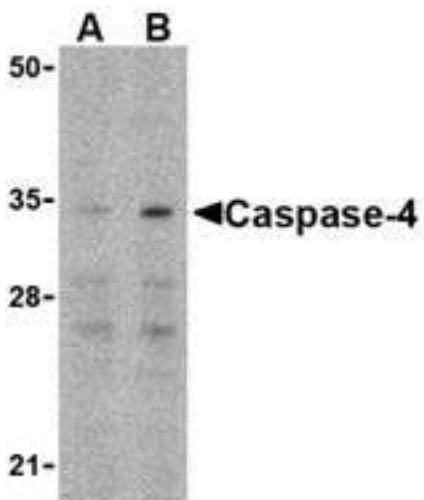
Anti-CASP4 / Caspase 4 antibody IHC of human skin. Immunohistochemistry of formalin-fixed, paraffin-embedded tissue after heat-induced antigen retrieval. Antibody LS-B710 concentration 5 ug/ml.

Immunohistochemistry Image:



Anti-CASP4 / Caspase 4 antibody IHC of human breast. Immunohistochemistry of formalin-fixed, paraffin-embedded tissue after heat-induced antigen retrieval. Antibody LS-B710 concentration 5 ug/ml.

Western Blot Image:



Western blot of caspase-4 in Ramos cells with caspase-4 antibody at (A) 0.5 and (B) 1 g/ml.

Requested From:

Japan

Laboratory Reagent For In Vitro Research Use Only

Not for resale without prior written consent from LifeSpan BioSciences, Inc.

Created on 9/24/2014

© 2014 LifeSpan BioSciences