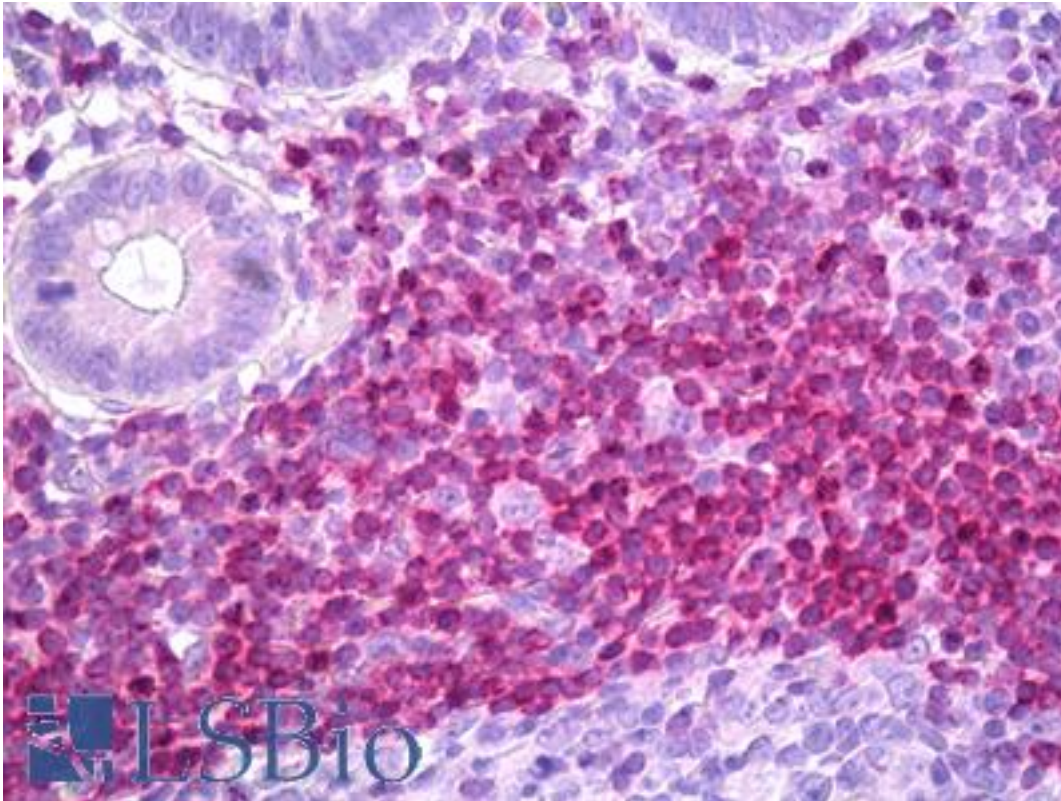


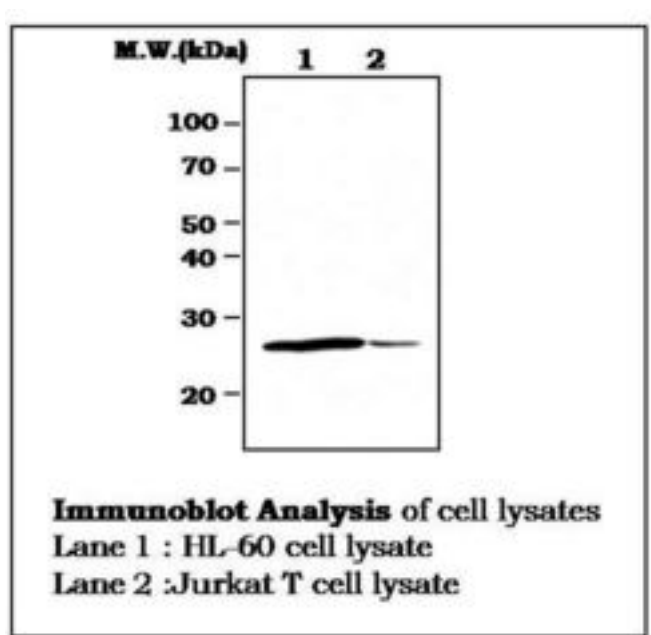
BCL2 / Bcl-2 Mouse anti-Human Monoclonal (11C5) Antibody - LS-B7085 - LSBio	
CatalogID:	LS-B7085
Validation:	This antibody replaces catalog number LS-C62054. It has been validated for use in the following assays: IHC-P.
Target:	B-cell CLL/lymphoma 2 (BCL2)
Synonyms:	BCL2 Antibody, Apoptosis regulator Bcl-2 Antibody, B-cell CLL/lymphoma 2 Antibody, B-cell lymphoma protein 2 Antibody, Bcl-2 Antibody, PPP1R50 Antibody
Family / Subfamily:	Apoptosis
Host	BCL2 antibody was produced in Mouse
Clonality:	Monoclonal
Isotype:	IgG2a,k
Clone Name:	11C5
Immunogen Species:	BCL2 / Bcl-2 antibody was raised against Human
Immunogen:	BCL2 / Bcl-2 antibody was raised against recombinant human protein purified from E. coli (His-Bcl-2).
Reactivity:	Human
Purification:	Ammonium sulfate precipitation
Presentation:	HEPES with 0.15M NaCl, 0.01% BSA, 0.03% sodium azide, and 50% glycerol
Recommended Storage:	Short term 4°C, long term aliquot and store at -20°C, avoid freeze thaw cycles.
Uses:	IHC - Paraffin (1:100), Western blot (1:2000), Immunoprecipitation, ELISA (Optimal dilution to be determined by the researcher)
Size:	50 µl

Immunohistochemistry Image:



Anti-BCL2 / Bcl-2 antibody IHC of human colon, lymphocytes. Immunohistochemistry of formalin-fixed, paraffin-embedded tissue after heat-induced antigen retrieval. Antibody LS-B7085 dilution 1:100.

Western Blot Image:



Requested From:

Japan

Laboratory Reagent For In Vitro Research Use Only

Not for resale without prior written consent from LifeSpan BioSciences, Inc.

Created on 9/24/2014

© 2014 LifeSpan BioSciences